

FLU & VACCINE PROTECTION

CROSSWORD PUZZLE

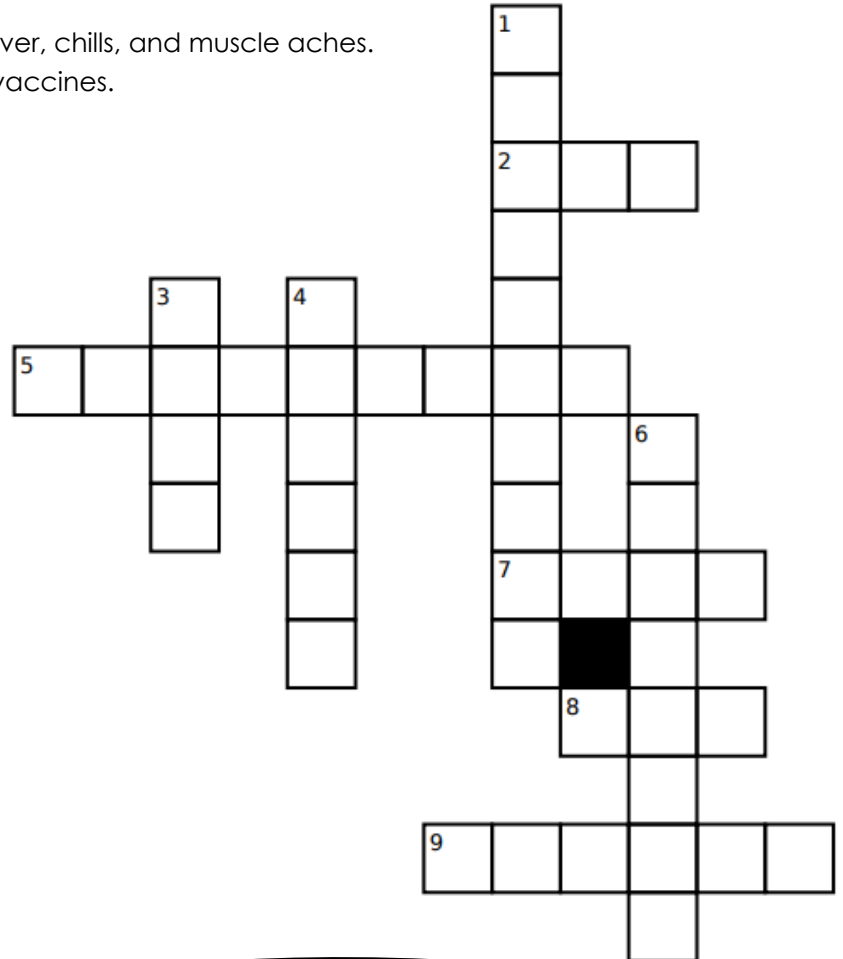
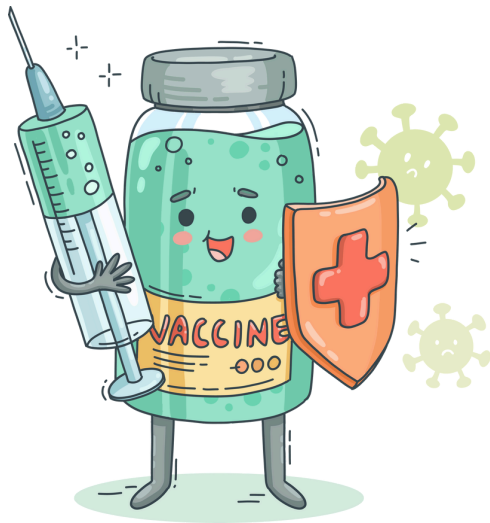
As an ESRD patient, it's vital to stay up-to-date on vaccines before winter weather hits. Complete this crossword puzzle with clues related to flu and pneumococcal vaccines, and general vaccine knowledge for dialysis patients.

DOWN

1. ____ is a virus that spreads through blood and body fluids and can hurt your liver.
3. Flu vaccines should be received every ____.
4. Dialysis patients have a weaker ____ system.
6. When someone coughs or sneezes, sickness can spread through tiny ____ in the air.

ACROSS

2. The ____20 shot is a single dose that protects the lungs without the need for additional shots.
5. This lung infection can cause fatigue, frequent coughing, fever, and difficulty breathing.
7. The flu vaccine is also called a flu ____.
8. This virus can cause severe illness, including fever, chills, and muscle aches.
9. Talk to your ____ if you have questions about vaccines.



- ANSWER KEY
1. Hepatitis B
 2. PCV
 3. Year
 4. Immune
 5. Pneumonia
 6. Droplets
 7. Shot
 8. Flu
 9. Doctor