

Boost Office Hours

June 6, 2024

Swati Gaur, MD, MBA, CMD, AGSF

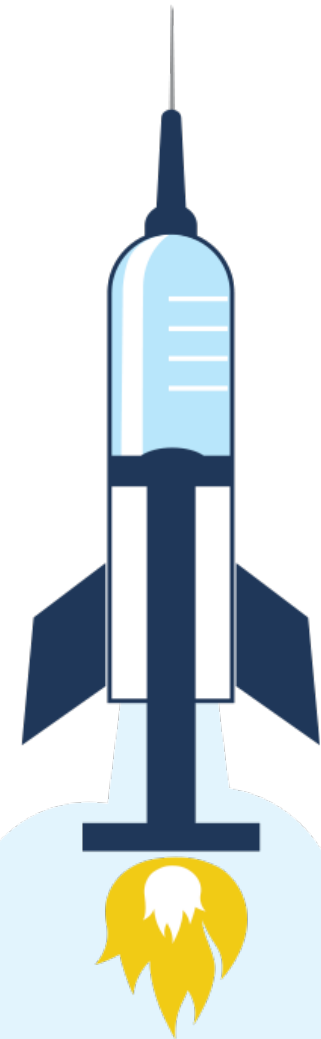
Northeast Georgia Health System
Alliant Health Solutions

Erica Umeakunne, MSN, MPH, APRN, CIC

Alliant Health Solutions

Deena Tarver, MBA, BSHCA

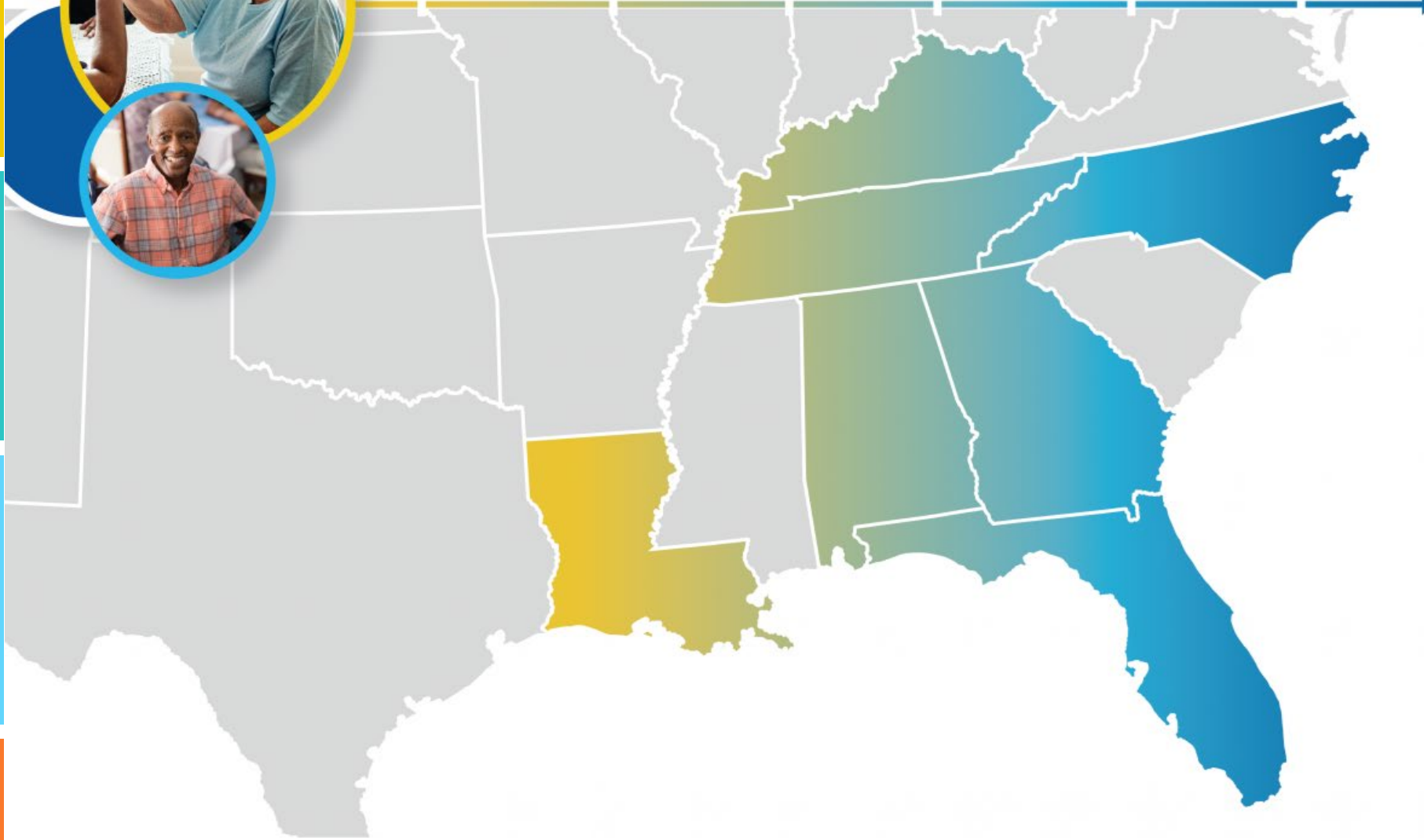
Alliant Health Solutions



 **ALLIANT**
HEALTH SOLUTIONS

QIN-QIO
Quality Innovation Network -
Quality Improvement Organizations
CENTERS FOR MEDICARE & MEDICAL SERVICES
QUALITY IMPROVEMENT & INNOVATION GROUP

Making Health Care Better *Together*



About Alliant Health Solutions

Swati Gaur, MD, MBA, CMD, AGSF

Medical Director of the Year 2022

ASSOCIATE CHIEF MEDICAL OFFICER, RAINMAKERS SOLUTIONS
MEDICAL DIRECTOR, ALLIANT HEALTH SOLUTIONS
SENIOR MEDICAL DIRECTOR, POST-ACUTE CARE,
NORTHEAST GEORGIA MEDICAL CENTER

- Past chair of an Infection Advisory Committee during the COVID-19 pandemic
- Created and issued guidance to a COVID-19 task force
- National and international speaker on infection prevention and control issues in nursing homes
- Board certified in internal medicine, geriatrics, and hospice and palliative medicine
- Masters in business administration from Georgia Institute of Technology



Erica Umeakunne, MSN, MPH, APRN, CIC

INFECTION PREVENTION SPECIALIST

Erica is an adult gerontology nurse practitioner and infection preventionist with experience in primary care, critical care, health care administration and public health.

She was previously the interim hospital epidemiology director for a large Atlanta health care system and a nurse consultant in the Centers for Disease Control and Prevention's (CDC) Division of Healthcare Quality Promotion. At the CDC, she served as an infection prevention and control (IPC) subject matter expert for domestic and international IPC initiatives and emergency responses, including Ebola outbreaks and, most recently, the COVID-19 pandemic.

Erica enjoys reading, traveling, family time and outdoor activities.

Erica.Umeakunne@allianthealth.org



Deena Tarver, MBA, BSHA

VACCINE ADVISOR

Deena Tarver is a vaccine advisor with a focus on the COVID vaccine.

She has a business background and owned businesses before entering the health industry. Her passion for serving led her into the health field, where she could combine her business background and clinical knowledge to better serve others.

Deena enjoys time with her family and loves hiking with her husband and three fur babies.

Deena.Tarver@allianthealth.org





COVID-19 Epidemiology Update

Poll #1

What is your **PRIMARY** source for updates on the epidemiology and transmission of COVID-19 in your community?

- A. CDC COVID-19 Data Tracker
- B. State/local reports from the health department
- C. Reports from neighboring healthcare facilities (i.e., hospitals, outpatient facilities)
- D. News media
- E. Other sources not listed

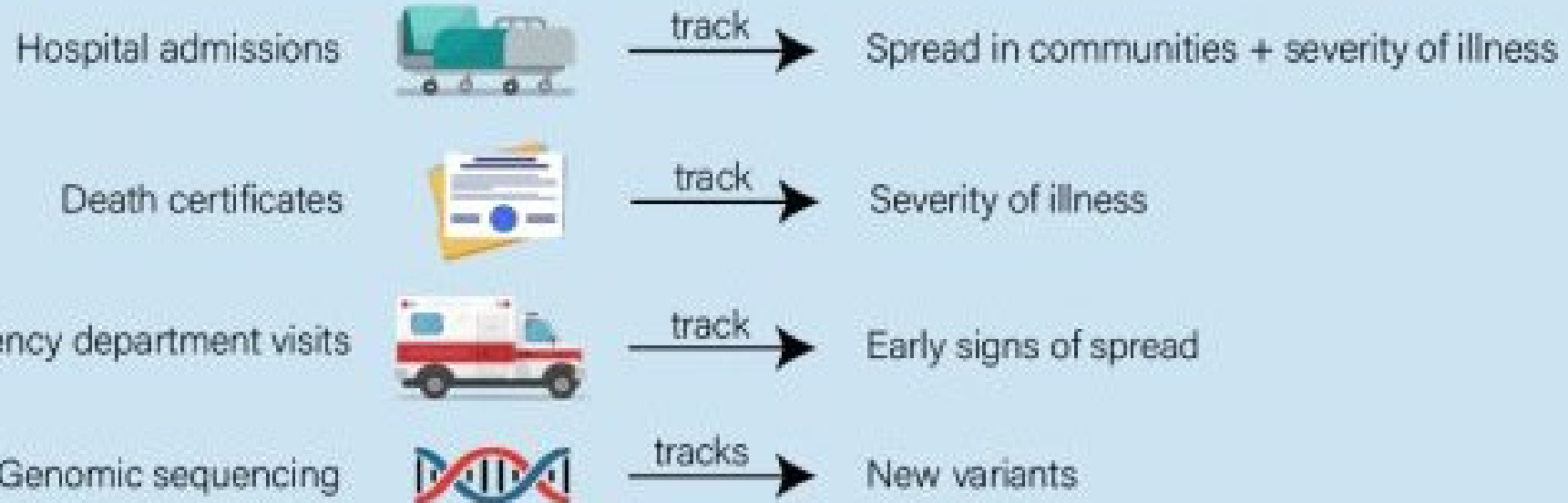
Poll #2

Are you using the CDC COVID-19 Data Tracker to help inform your facility's IPC practices?

- A. Yes
- B. Sometimes
- C. Not at all

COVID-19 Indicators

Updated public health tracking* will keep you informed about COVID-19



Check [COVID.cdc.gov](https://www.cdc.gov) to know when to take action

*To account for changes in available data after the end of the U.S. Public Health Emergency declaration

bit.ly/mm7219e1

MAY 5, 2023

MMWR

CDC Data and Surveillance: Available Metrics

- COVID-19 hospital admissions (COVID-Net)
- COVID-19 test positivity
- Emergency Department COVID-19 visits
- COVID-19 mortality
- Wastewater surveillance
- NHSN Data
- Genomic surveillance

CDC COVID Data Tracker

COVID-19 Update for the United States

Early Indicators

Test Positivity >

% Test Positivity

4.2%

(May 19 to May 25, 2024)

Trend in % Test Positivity

+0.8% in most recent week



Apr 6, 2024

May 25, 2024

Emergency Department Visits >

% Diagnosed as COVID-19

0.4%

(May 19 to May 25, 2024)

Trend in % Emergency Department Visits

+5.1% in most recent week



Apr 6, 2024

May 25, 2024

Severity Indicators

Hospitalizations >

Hospitalization Rate per 100,000 population

1

(May 5 to May 11, 2024)

Trend in Hospitalization Rate

No change in most recent week



Mar 23, 2024

May 11, 2024

Deaths >

% of All Deaths in U.S. Due to COVID-19

0.6%

(May 19 to May 25, 2024)

Trend in % COVID-19 Deaths

No change in most recent week



Apr 6, 2024

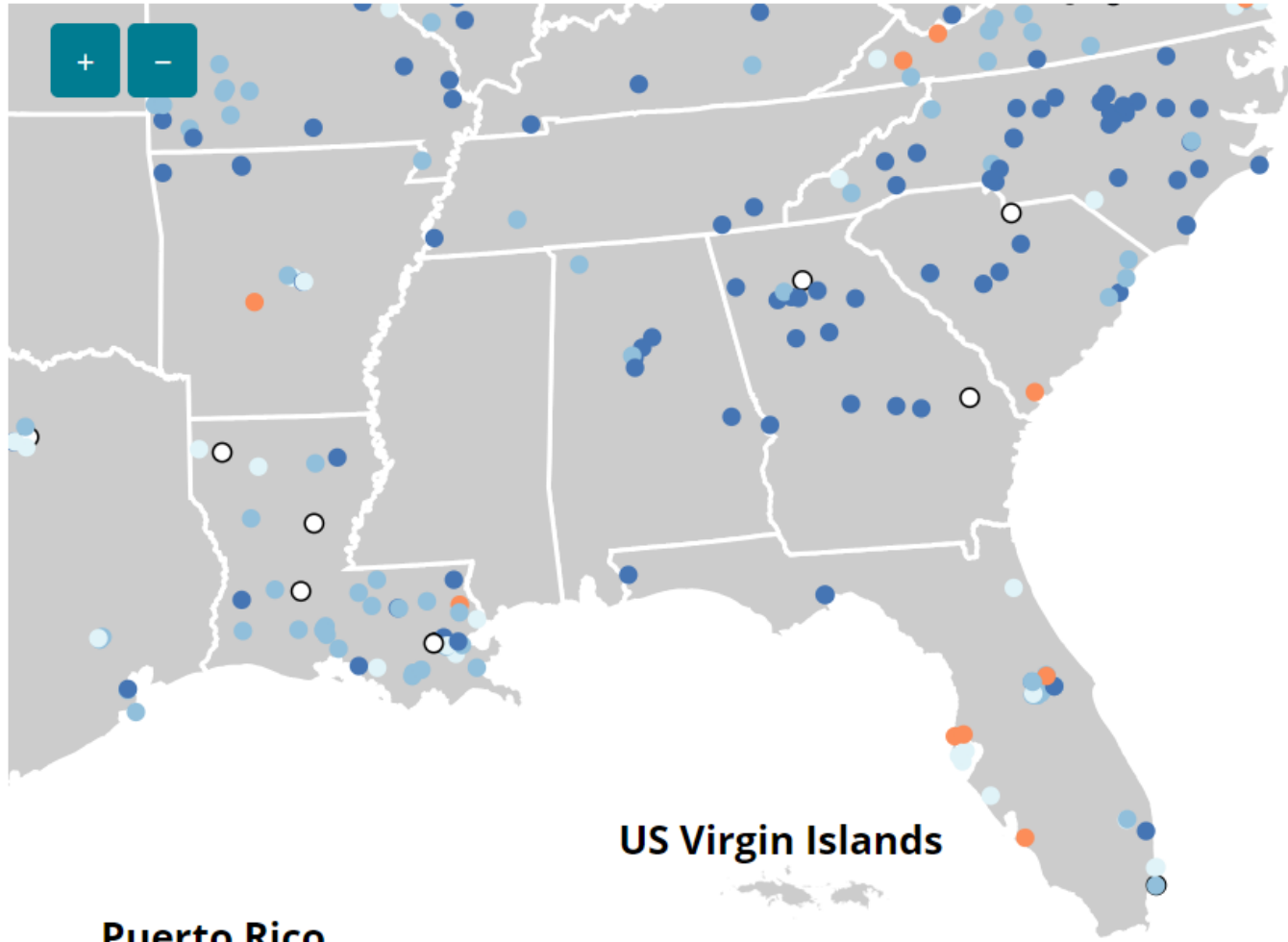
May 25, 2024

These early indicators represent a portion of national COVID-19 tests and emergency department visits. [Wastewater](#) information also provides early indicators of spread.

CDC | Test Positivity data through: May 25, 2024; Emergency Department Visit data through: May 25, 2024; Hospitalization data through: May 11, 2024; Death data through: May 25, 2024.

Posted: June 3, 2024 2:50 PM ET

Wastewater Surveillance



Current SARS-CoV-2 virus levels by site, United States

Current virus levels category	Num. sites	% sites	Category change in last 7 days
New Site	21	2	0%
0% to 19%	519	41	- 8%
20% to 39%	470	37	- 9%
40% to 59%	187	15	3%
60% to 79%	49	4	58%
80% to 100%	8	1	60%

Total sites with current data: 1254

Total number of wastewater sampling sites: 1405

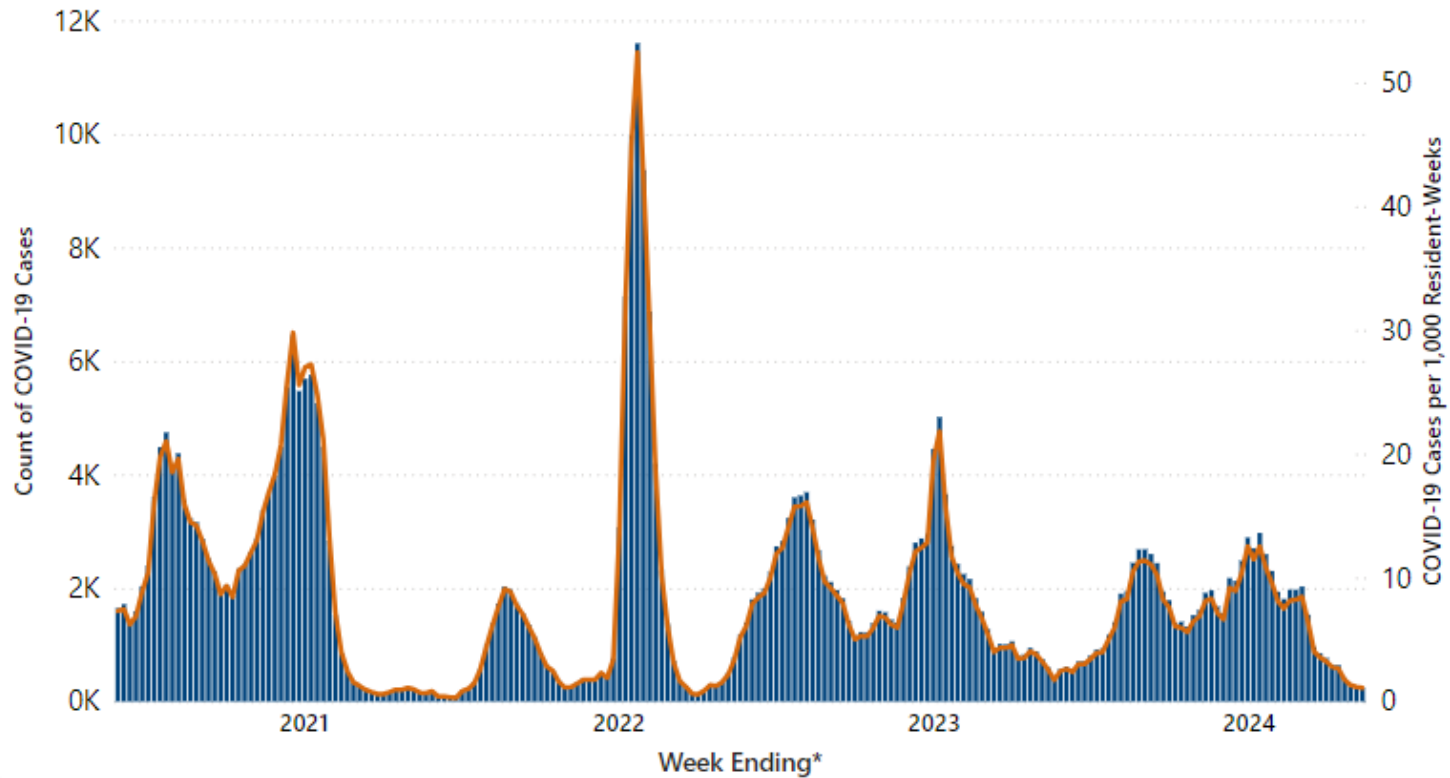
Confirmed COVID-19 Cases among Residents and Rate per 1,000 Resident-Weeks in Nursing Homes, by Week—United States



Confirmed COVID-19 Cases among Residents and Rate per 1,000 Resident-Weeks in Nursing Homes, by Week—United States



● Count COVID-19 Cases — Rate of COVID-19 Cases



Display by FEMA/HHS Region

Region 4

Display by State

All

Preparing for and Responding to Nursing Home Residents or Health Care Personnel (HCP) Who Develop Signs or Symptoms of a Respiratory Viral Infection

- **PREPARE** for respiratory viruses (e.g., SARS-CoV-2, influenza, RSV)
 - Vaccinate
 - Allocate resources
 - Monitor and mask
 - Educate
 - Ventilate
 - Test and treat
- **RESPOND** when a resident or HCP develops signs or symptoms of a respiratory viral infection
 - **For Residents:** Apply appropriate transmission-based precautions
 - **For HCP:** Test anyone with respiratory illness signs or symptoms
 - Investigate for potential respiratory virus spread among residents **and** HCP
- **CONTROL** respiratory virus spread when transmission is identified
 - Notify the local or state public health department when respiratory viral outbreaks* are suspected or confirmed
 - Consider establishing cohort units for residents with confirmed infections
 - Limit group activities and communal dining
 - Consider modifications to indoor visitation policies
 - Avoid new admissions or transfers into and out of units or wards with infected residents or facility-wide if the outbreak is more widespread

Source Control, Respiratory Etiquette, and Hand Hygiene

Source Control

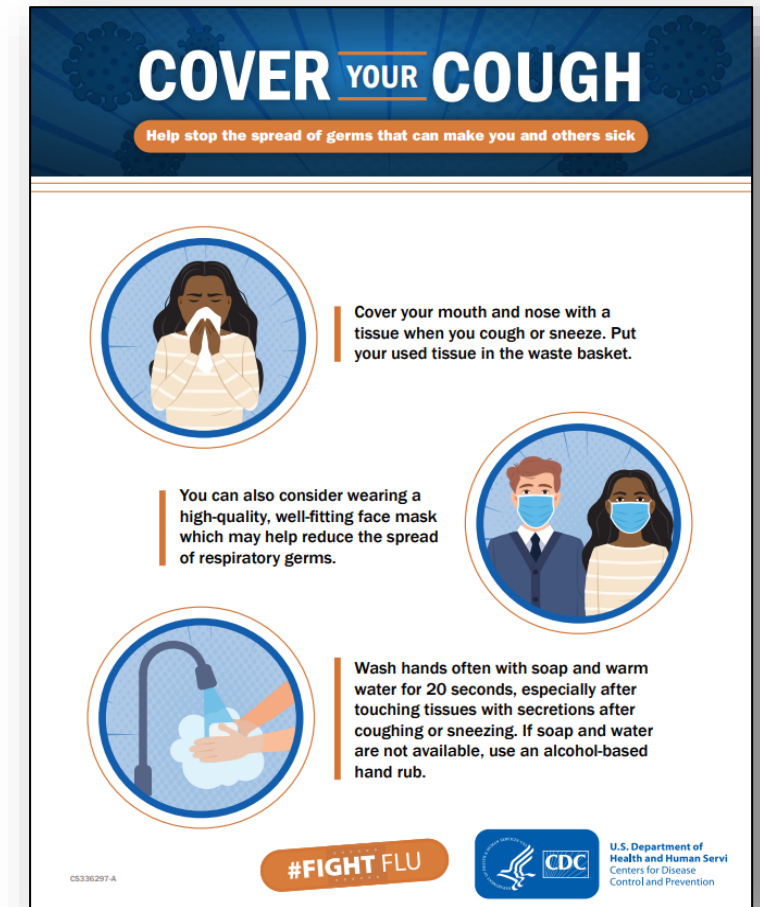
- Utilize as an IPC intervention to reduce risk in certain situations
 - Can be implemented in specific areas of the facility or broadly when there is an increased risk of transmission within the local area or during active or ongoing outbreaks
 - Could be guided by facility policies, risk assessment, or public health authorities

Respiratory Etiquette

- Post [signage](#) at facility entrances
- Provide masks, tissues, hand sanitizer and trash receptacles along with signage

Hand Hygiene

- Regularly monitor compliance
- Set improvement goals and report data to the QAPI committee regularly
- Identify barriers to compliance among staff



Respiratory Viruses: Potential Data Sources

[COVID-19
Data Tracker](#)

[RESP-NET](#)

[ED surveillance
for COVID-19,
Flu, and RSV](#)

[ILINET](#)

IPC Risk
Assessment &
Plan

Facility IPC
Surveillance



COVID-19 Update: RESPNet, SARS-CoV-2 Subvariants, & Vaccines

HHS Region:

USA

Data for the 2-Week Period

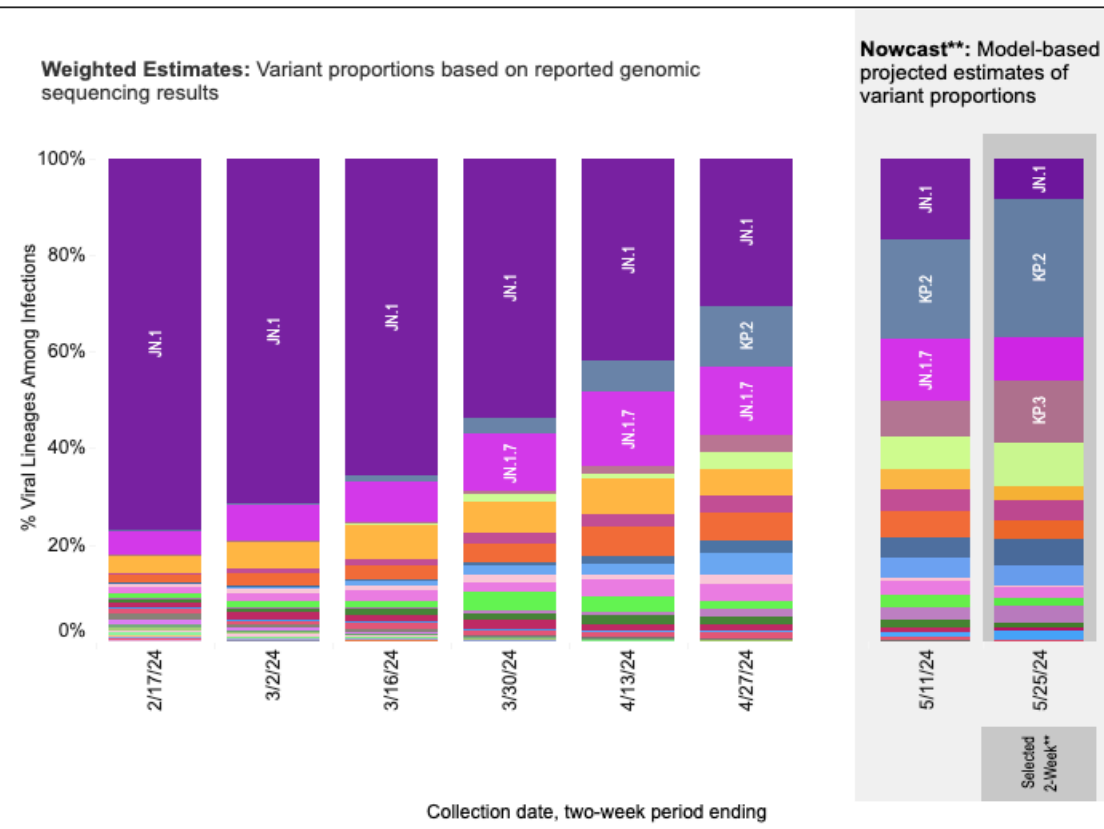
Ending on:

5/25/2024(Nowcast)

This shows weighted and Nowcast estimates for the United States. The table and map show estimates for the 2-week period ending on 5/25/2024(Nowcast) if available.

Weighted and Nowcast Estimates in United States for 2-Week Periods in 2/4/2024 – 5/25/2024

Hover over (or tap in mobile) any lineage of interest to see the amount of uncertainty in that lineage's estimate.



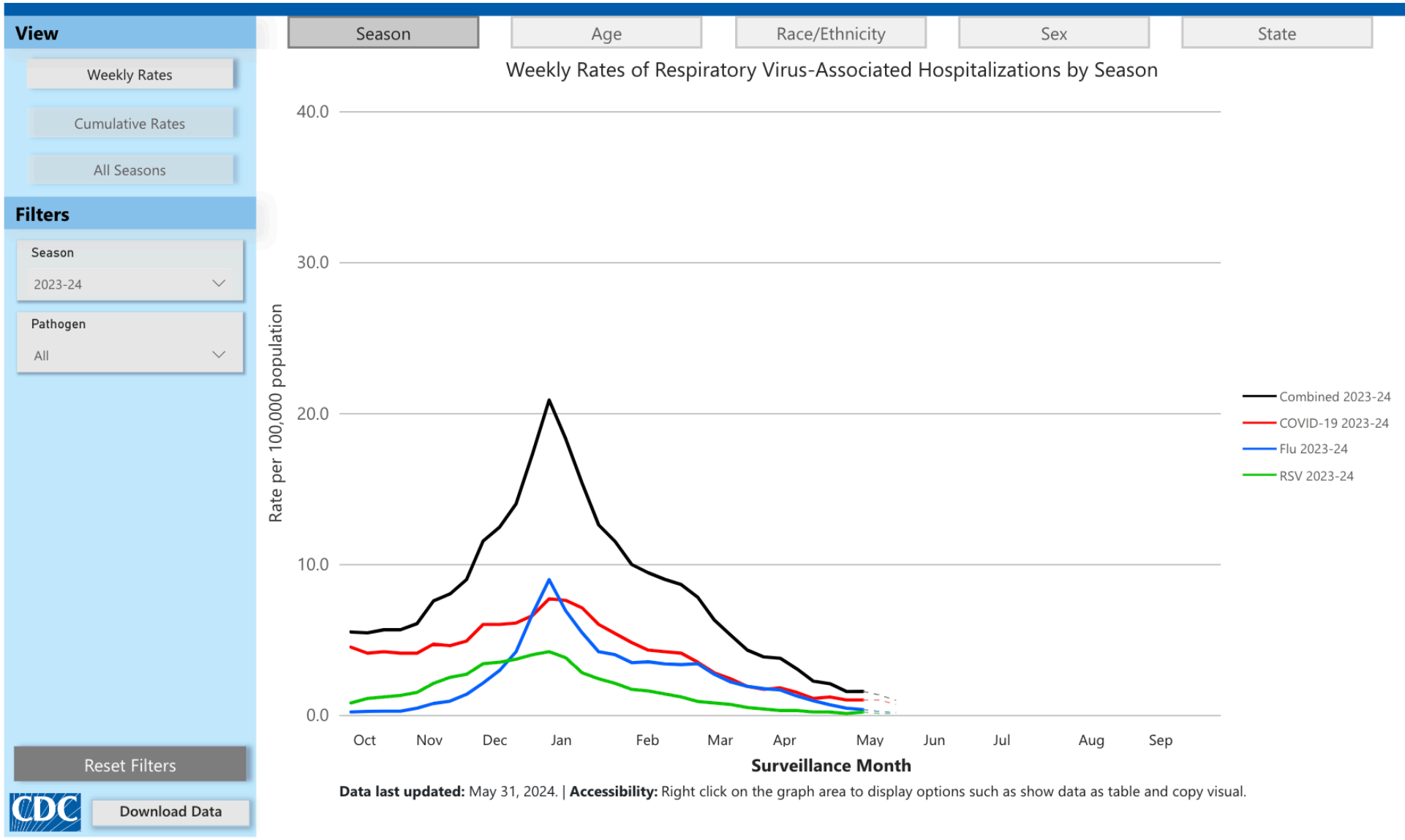
Nowcast Estimates in United States for 5/12/2024 – 5/25/2024

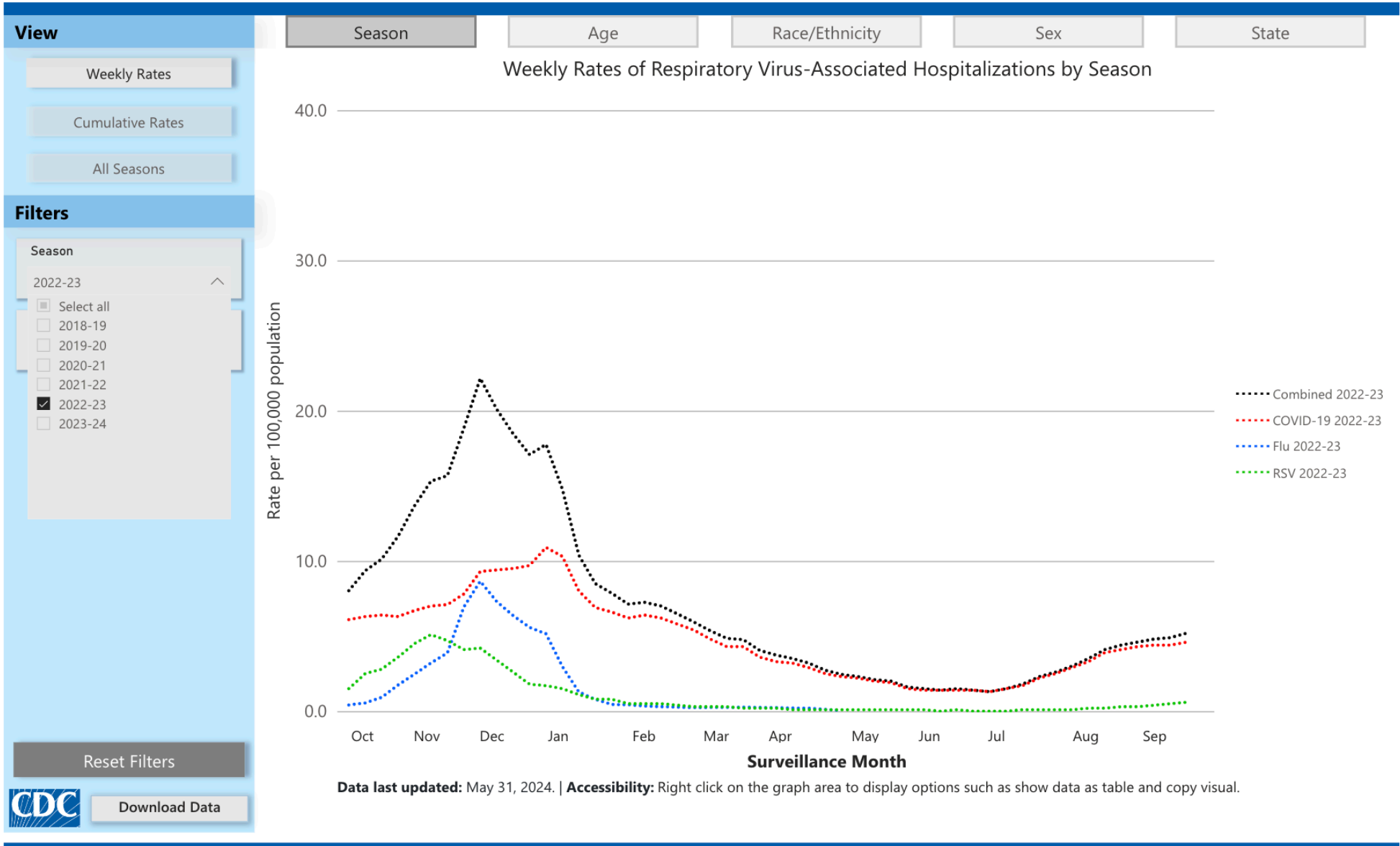
USA			
WHO label	Lineage #	%Total	95%PI
Omicron	KP.2	28.5%	23.0-34.7%
	KP.3	12.7%	7.8-19.6%
	JN.1.7	9.2%	7.3-11.6%
	KP.1.1	9.2%	6.5-12.8%
	JN.1	8.4%	6.8-10.3%
	JN.1.16.1	5.4%	3.3-8.8%
	JN.1.16	4.2%	2.6-6.8%
	JN.1.13.1	4.0%	2.8-5.7%
	JN.1.11.1	3.9%	2.6-5.9%
	KS.1	3.5%	2.0-6.1%
	JN.1.8.1	2.7%	2.0-3.6%
	KQ.1	2.2%	1.2-4.0%
	KW.1.1	1.7%	0.7-4.2%
	JN.1.18	1.7%	1.1-2.5%
	JN.1.32	1.0%	0.7-1.5%
	XDP	0.6%	0.4-1.0%
	KV.2	0.4%	0.2-0.7%
	GE.1	0.0%	0.0-0.0%
	BA.2	0.0%	0.0-0.1%
	BA.2.86	0.0%	0.0-0.0%
JG.3	0.0%	0.0-0.0%	
HV.1	0.0%	0.0-0.0%	

Subvariant Surveillance

<https://covid.cdc.gov/covid-data-tracker/#variant-proportions>

** These data include Nowcast estimates, which are modeled projections that may differ from weighted estimates generated at later dates
 # Enumerated lineages are US VOC and lineages circulating above 1% nationally in at least one 2-week period. "Other" represents the aggregation of lineages which are circulating <1% nationally during all 2-week periods displayed. While all lineages are tracked by CDC, those named lineages not enumerated in this graphic are aggregated with their parent lineages, based on Pango lineage definitions, described in more detail here: <https://web.archive.org/web/20240116214031/https://www.pango.network/the-pango-nomenclature-system/statement-of-nomenclature-rules>.





View

Weekly Rates

Cumulative Rates

All Seasons

Filters

Season

Multiple selections

- Select all
- 2018-19
- 2019-20
- 2020-21
- 2021-22
- 2022-23
- 2023-24

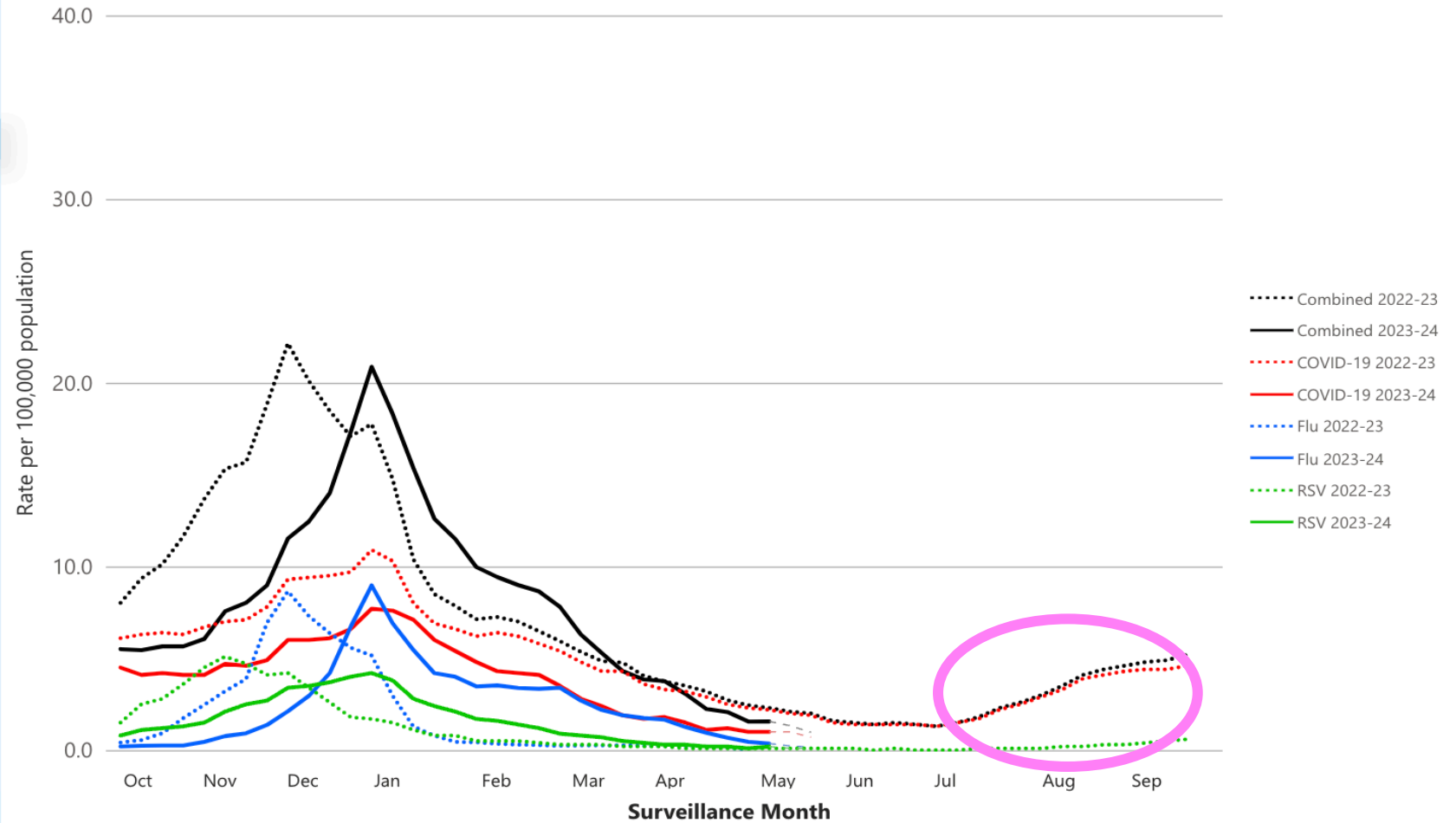
Reset Filters



Download Data

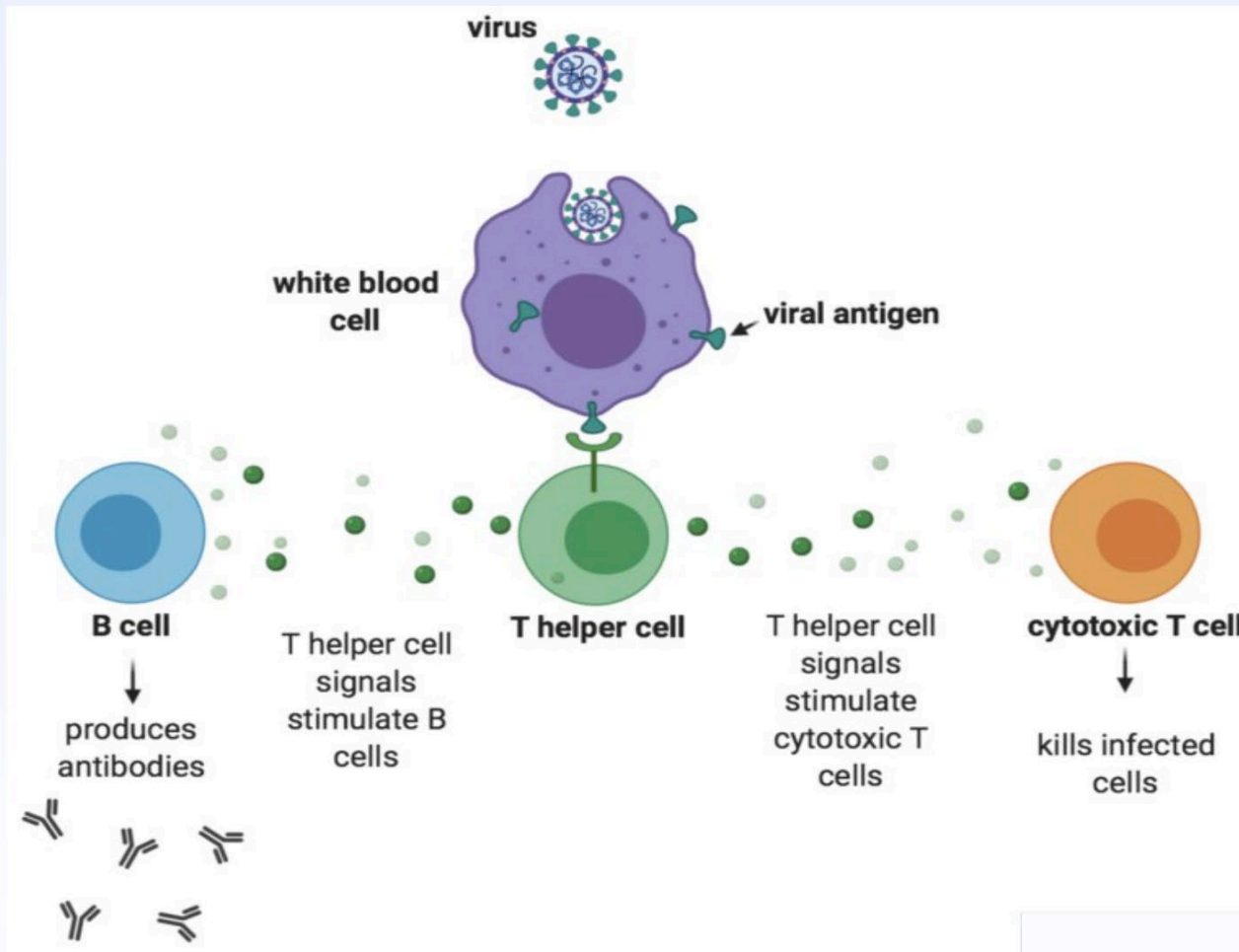
- Season
- Age
- Race/Ethnicity
- Sex
- State

Weekly Rates of Respiratory Virus-Associated Hospitalizations by Season



Data last updated: May 31, 2024. | Accessibility: Right click on the graph area to display options such as show data as table and copy visual.

Adaptive immunity includes cellular and humoral responses



Insufficient pools of naïve T cells impacts ability to generate:

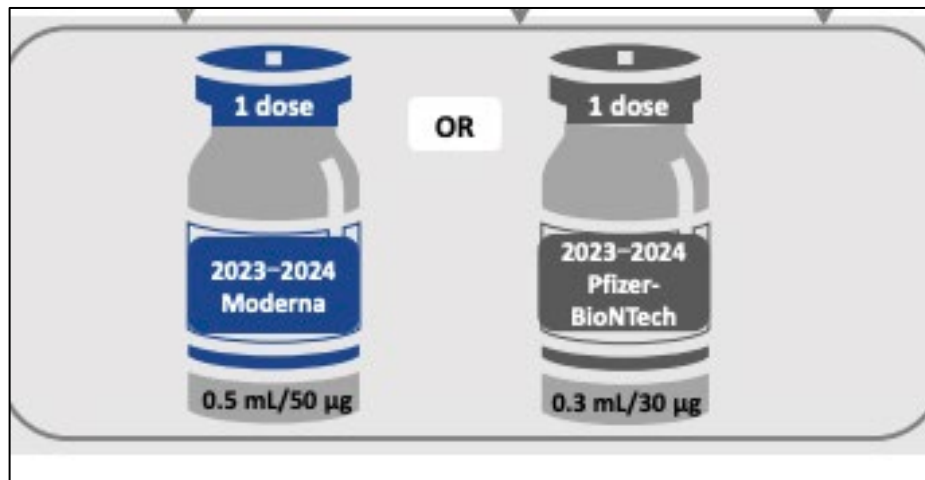
- Neutralizing antibody responses
- Cytotoxic T cells

Source: Rey, Gertrud. T Cell Responses to Coronavirus Infection are Complicated. <https://www.virology.ws/2020/11/05/t-cell-responses-to-coronavirus-infection-are-complicated/>

What Is the Recommendation?

Existing: ALL over 6 months SHOULD receive an Updated COVID-19 vaccine

New added recommendation: Additional dose of Updated COVID-19 vaccine **SHOULD** be administered 4 months after the original updated vaccine



FDA VRBPAC Update

- 2024-2025 formula for Flu – 3/5/2024
- 2024-2025 formula for COVID-19 – 6/5/2024

Current COVID-19 Vaccine Availability for 23-24

Pfizer

Pfizer's anticipated stop shipping date means Pfizer will stop shipping direct orders, as well as wholesaler orders by the dates noted.

Wholesalers will also likely have 2023-2024 formula COVID-19 vaccines in stock beyond the 'Pfizer Stop Shipping Date' noted, but please have your customer work with their respective wholesaler or distributor to place an order. Additionally, Pfizer has communicated to wholesalers when Pfizer will stop shipping 2023-2024 formula COVID-19 vaccines.

Presentation 2023-2024 formula	Pfizer Anticipated Stop Shipping Date	Product Expiry
12+ Plastic Prefilled syringe, FROZEN	April 17, 2024 (no longer available for order)	ULT expiry - June 30, 2024*
12+ Single dose vial presentation	June 20, 2024	ULT expiry - Jan 31, 2025*
12+ glass prefilled syringe, DO NOT FREEZE	June 20, 2024	August 31, 2024
5-11 years Single-dose vial presentation	June 20, 2024	ULT expiry- August 31, 2024*
6 months to 4 years 3 dose multiple dose vials	April 29, 2024 (no longer available for order)	ULT Expiry- July 31, 2024*

Moderna

Vaccines will remain available through Moderna Direct and continue to be shipped to the wholesaler/distributor channel until a new variant is available (anticipating August).

Presentation 2023-2024 formula	Moderna Anticipated Stop Shipping Date	Product Expiry
6mo-11yr Single Dose vials	No anticipated stop date until new vaccine is out	Sept/Oct 2024
12+ Single dose vial and Pre-filled syringes	No anticipated stop date until new vaccine is out	Sept/Oct 2024

Novavax

Most of the distributors have opened prebooking this product for the Fall, so buildings can prebook with their distributor now.

Presentation 2023-2024 formula	Novavax Anticipated Stop Shipping Date	Product Expiry
12+ Multi-dose vials	April 29, 2024 (no longer available for order)	May 31, 2024

Order **all three** vaccines through your medical supply company, pharmacy or wholesaler. To order directly from Moderna, visit [Modernadirect.com](https://www.modernadirect.com). To order Pfizer, visit primevaccines.pfizer.com. Novavax can only be ordered through your medical supply company or pharmacy.

	Pfizer	Moderna	Novavax
Type	mRNA	mRNA	Protein
Single/Multi-Dose	Single dose vial	Single dose vial	Multi-dose vial
Temperature	Fridge temps. 36-46 degrees Fahrenheit	Freezer for up to nine months -58 to 5 degrees Fahrenheit, fridge 30 days at 36-46 degrees Fahrenheit	Fridge temps 36-46 degrees Fahrenheit
Direct Ordering	Available	Available	Not available. Order through a medical supply company.
Minimum Doses	Minimum direct order is two boxes which is 20 vaccines.	Minimum direct order is one box or 10 vaccines.	Minimum order of two vials (10 doses) from the medical supply company
Trade Name	COMIRNATY	Spikevax	NVX-CoV2373
Pre-Ordering	Direct from Pfizer or through a wholesaler or pharmacy	Direct from Moderna or through a wholesaler or pharmacy	Available through a wholesaler.

Questions?



Nursing Home and Partnership for Community Health: CMS 12th SOW GOALS



OPIOID UTILIZATION AND MISUSE

- Promote opioid best practices
- Reduce opioid adverse drug events in all settings



PATIENT SAFETY

- Reduce hospitalizations due to c. diff
- Reduce adverse drug events
- Reduce facility acquired infections



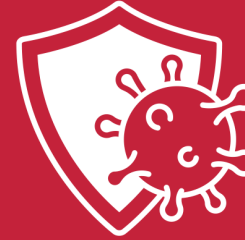
CHRONIC DISEASE SELF- MANAGEMENT

- Increase instances of adequately diagnosed and controlled hypertension
- Increase use of cardiac rehabilitation programs
- Reduce instances of uncontrolled diabetes
- Identify patients at high-risk for kidney disease and improve outcomes



CARE COORDINATION

- Convene community coalitions
- Reduce avoidable readmissions, admissions to hospitals and preventable emergency department visits
- Identify and promote optimal care for super utilizers



COVID-19

- Support nursing homes by establishing a safe visitor policy and cohort plan
- Provide virtual events to support infection control and prevention
- Support nursing homes and community coalitions with emergency preparedness plans



IMMUNIZATION

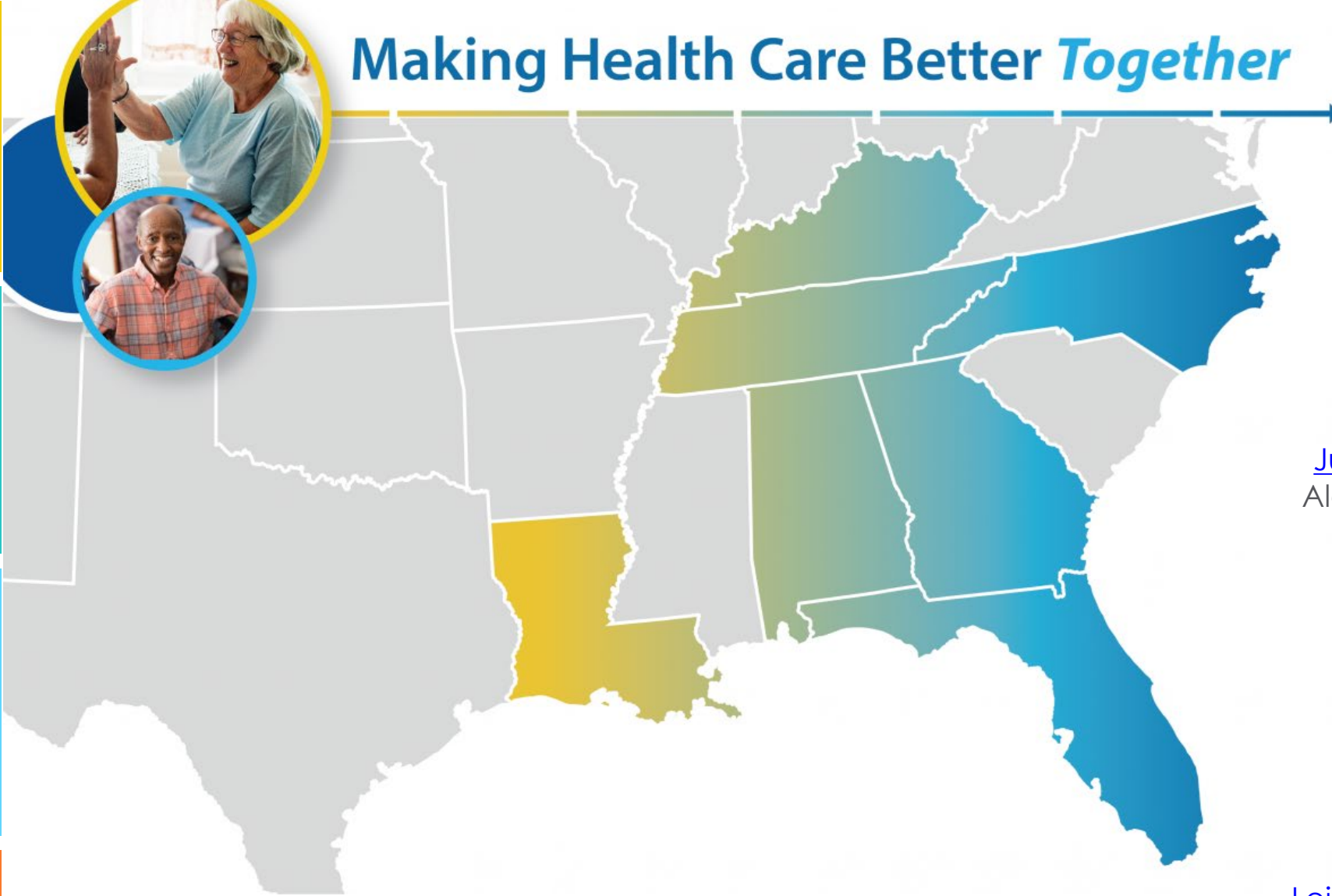
- Increase influenza, pneumococcal, and COVID-19 vaccination rates



TRAINING

- Encourage completion of infection control and prevention trainings by front line clinical and management staff

Making Health Care Better *Together*



Julie Kueker

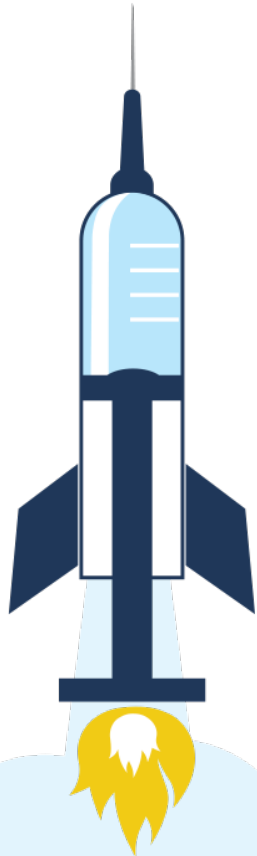
Julie.Kueker@AlliantHealth.org
Alabama, Florida and Louisiana



Leighann Sauls

Leighann.Sauls@AlliantHealth.org
Georgia, Kentucky, North Carolina and Tennessee

Program Directors



Thank you



@AlliantQIO



@AlliantQIO



Alliant Health Solutions



AlliantQIO

This material was prepared by Alliant Health Solutions, a Quality Innovation Network–Quality Improvement Organization (QIN–QIO) under contract with the Centers for Medicare & Medicaid Services (CMS), an agency of the U.S. Department of Health and Human Services (HHS). Views expressed in this material do not necessarily reflect the official views or policy of CMS or HHS, and any reference to a specific product or entity herein does not constitute endorsement of that product or entity by CMS or HHS. Publication No. 12SOW-AHS-QIN-QIOTO1-NH TO1-PCH–5829-06/04/24