

# Reporting Influenza Data

## Welcome!

Chat with Technical Support if you need assistance.

**Presented by:**

Donald Chitanda, MPH, CIC LTC-CIP  
Infection Prevention Technical Advisor

July 18, 2024

# Donald Chitanda, MPH, CIC LTC-CIP

## INFECTION PREVENTION TECHNICAL ADVISOR

Donald is a health professional with experience in public health epidemiology and infection prevention. Over the past several years, he was an infection preventionist at the hospital- and system-level, where he was part of a task force to ensure the safety of caregivers and patients during the ongoing COVID-19 pandemic. In addition, he was a part of and led several projects to reduce hospital-acquired infections utilizing Lean Six Sigma methodologies. He is also trained in ensuring ongoing facility survey readiness for regulatory agencies such as the CMS and The Joint Commission.

**Donald enjoys spending time with family and doing outdoor activities.**

**Contact: [Donald.Chitanda@AlliantHealth.org](mailto:Donald.Chitanda@AlliantHealth.org)**



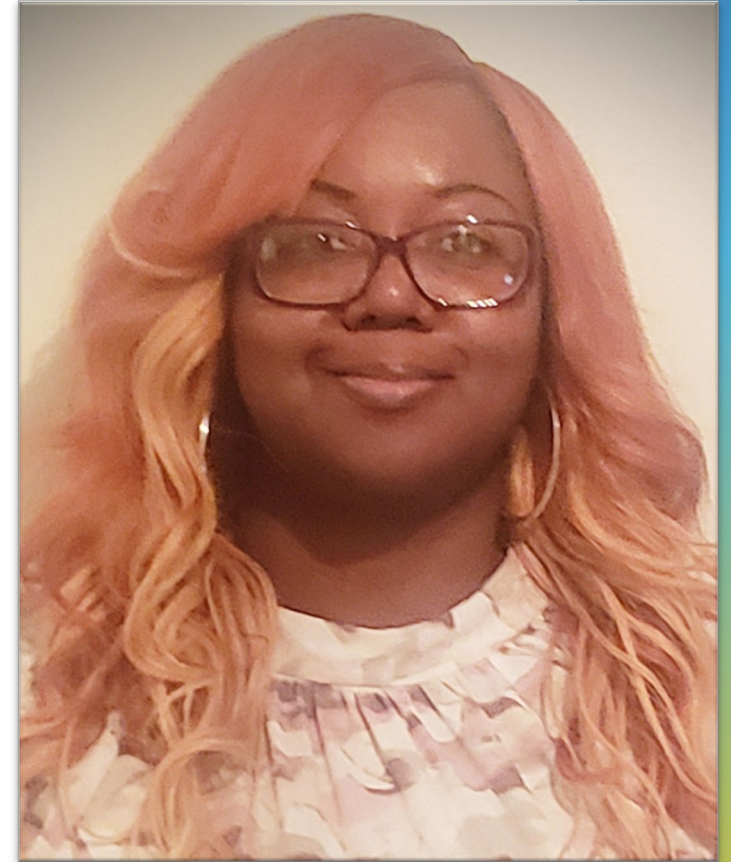
# Paula St. Hill, DrPH, MPH, CIC, A-IPC

## INFECTION PREVENTION TECHNICAL ADVISOR

Dr. St. Hill is a doctoral student with a diverse background in public health, infection prevention, epidemiology and microbiology. She has over 10 years of health care experience and enjoys public health and identifying ways to improve health outcomes, specifically those related to healthcare-associated infections.

**Dr. St. Hill enjoys spending time with her friends and family.**

**Contact: [Paula.StHill@allianthealth.org](mailto:Paula.StHill@allianthealth.org)**



# Erica Umeakunne, MSN, MPH, APRN, CIC

## INFECTION PREVENTION SPECIALIST

Erica Umeakunne is an adult gerontology nurse practitioner and infection preventionist with experience in primary care, critical care, health care administration and public health.

She was previously the interim hospital epidemiology director of a large health care system in Atlanta and a nurse consultant in the Centers for Disease Control and Prevention's (CDC) Division of Healthcare Quality Promotion. While at the CDC, she was an infection prevention and control (IPC) subject matter expert for domestic and international IPC initiatives and emergency responses, including Ebola outbreaks and the COVID-19 pandemic.

**Erica enjoys reading, traveling, family time and outdoor activities.**

**Contact: [Erica.Umeakunne@allianthealth.org](mailto:Erica.Umeakunne@allianthealth.org)**



# Amy Ward, MS, BSN, RN, CIC, FAPIC

## PATIENT SAFETY MANAGER

Amy is a registered nurse with a diverse background in acute care nursing, microbiology, epidemiology and infection control. She is passionate about leading and mentoring new and future Infection preventionists in their career paths and assisting them in reducing healthcare-associated infections across the continuum of care.

**Amy enjoys spending time with her family. She loves all the time she can get outdoors, camping, bicycling, and running.**

**Contact: [Amy.Ward@AlliantHealth.org](mailto:Amy.Ward@AlliantHealth.org)**



# Objectives

## Agenda:

- New Updates/Upcoming NHSN trainings
- HCP Vaccination Flu Summary Reporting
- NHSN Optional Reporting of Influenza and RSV Vaccination for LTC Residents
- NHSN Resources
- Live questions and answers

# Upcoming Trainings

## NHSN Annual Training

WHEN: Tuesday, July 23–Thursday, July 25

WHERE: Online

TIME: 9 a.m. ET

REGISTER NOW: <https://2024nhsntraining-pac.vfairs.com/>

# HCP Influenza Reporting



DEPARTMENT OF HEALTH & HUMAN SERVICES  
Centers for Medicare & Medicaid Services  
Center for Clinical Standards and Quality  
7500 Security Boulevard, Mail Stop S3-02-01  
Baltimore, MD 21244-1850



07/01/2024

**RE: Non-Compliance that May Result in a 2% Reduction to Your FY 2025 Annual Payment Update for CCN**

To Whom It May Concern:

This letter is to officially notify you that [redacted] did not meet one or more of the Skilled Nursing Facility (SNF) Quality Reporting Program (QRP) requirements for Calendar Year (CY) 2023 data submission that impacts Fiscal Year (FY) 2025 Annual Payment Update (APU). Failure to meet the requirements of the SNF QRP will result in a two (2) percentage point reduction in the FY 2025 APU.

CMS has determined your facility did not meet the program requirements for the following reason(s):

{Did not submit all required months of complete CMIT Measure ID #00180 COVID-19 Vaccination Coverage among Healthcare Personnel (HCP) data }

If you believe you have been identified for this payment reduction in error, you have the right to request a reconsideration of this decision. Reconsideration requests will only be accepted via email no later than 11:59:59 pm local time zone, **August 14, 2024** at the following address: [SNFQRPreconsiderations@cms.hhs.gov](mailto:SNFQRPreconsiderations@cms.hhs.gov).

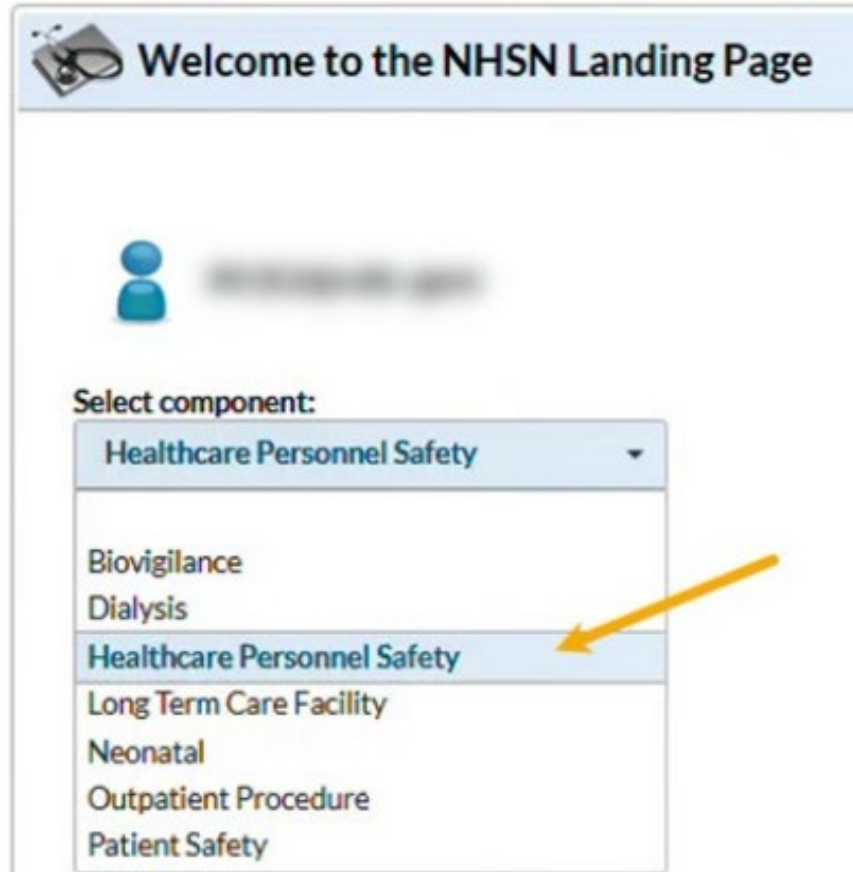
*Note: CMS blanket waivers and flexibility for health care providers that were issued during the COVID-19 Public Health Emergency (PHE) ended on May 11, 2023. This means that considerations in place during the PHE for requests of reconsideration are no longer in effect for FY 2025.*

# When To Report


- The reporting period for the 2023-2024 influenza season is from October 1, 2023, through March 31, 2024.
- The deadline to report the one-time summary report is **May 15, 2024**.

# What To Report

- Report **annual HCP influenza vaccination summary data** through the NHSN Healthcare Personnel Safety (HPS) Component for the 2023-2024 influenza season



Welcome to the NHSN Landing Page

 [blurred name]

Select component:

- Healthcare Personnel Safety
- Biovigilance
- Dialysis
- Healthcare Personnel Safety**
- Long Term Care Facility
- Neonatal
- Outpatient Procedure
- Patient Safety

# Who Can Report

- The NHSN-designated facility admin (FA) is the only person who can initiate the process of activating the HPS component in NHSN.
  - FA must have SAMS Level 3 reporting access to activate the HPS component.
  - FA can designate another user to do the reporting once activated.

## NHSN Home

Alerts

Dashboard ▶

Reporting Plan ▶

Resident ▶

Event ▶

Summary Data ▶

COVID-19/Respiratory Pathogens ▶

Vaccination Summary

Import/Export

Surveys ▶

Analysis ▶

Users ▶

Facility ▶

Group ▶

Logout



## NHSN Long Term Care Facility Component Home Page

▶ Long Term Care Dashboard

▼ Action Items

### COMPLETE THESE ITEMS

Survey Required

2023

Facility Geolocation

Confirm

### ALERTS

Customize Forms

Facility Info

Add/Edit Component

Locations

Direct Enroll

Confidentiality: The voluntarily provided information obtained in this surveillance system that would permit identification of any individual or institution without the consent of the individual, or the institution in accordance with Sections 304, 306 and 308(d) of the Public Health Service Act (42 USC 2641-2644). [Get Adobe Acrobat Reader for PDF files](#)

### Components Followed

Follow/ Followed	Component	Activated	Deactivated	Agreement Accepted	View Agreement
<input type="checkbox"/>	Biovigilance				
<input type="checkbox"/>	Dialysis				
<input checked="" type="checkbox"/>	Healthcare Personnel Safety	10/18/2022		Y	<a href="#">View Agreement</a>
<input checked="" type="checkbox"/>	Long Term Care Facility	01/28/2020		Y	<a href="#">View Agreement</a>
<input type="checkbox"/>	Medication Safety (pilot facilities only)				
<input type="checkbox"/>	Neonatal				
<input type="checkbox"/>	Outpatient Procedure				
<input type="checkbox"/>	Patient Safety				

### Contact Information

	Contact Type	Contact Name	Phone No.+ext	Email	Action
<input type="button" value="Edit"/>	Facility Administrator	Robert	404- [REDACTED]	[REDACTED]	<input type="button" value="Reassign"/>
<input type="button" value="Edit"/>	Healthcare Personnel Primary Contact	Robert	404- [REDACTED]	[REDACTED]	<input type="button" value="Reassign"/>
<input type="button" value="Edit"/>	Long Term Care Facility Primary Contact	Robert	404- [REDACTED]	[REDACTED]	<input type="button" value="Reassign"/>

# Influenza Vaccination Reporting

## Change in NHSN Facility Administrator

- NHSN Facility Administrator should transfer role to another user prior to leaving the facility!
- NHSN can add an individual as the new NHSN Facility Administrator if the previous NHSN Facility Administrator has left the facility
  - Do not re-enroll the facility in NHSN
- Complete the NHSN Facility Administrator Change Request Form  
<https://www.cdc.gov/nhsn/facadmin/index.html>
- After being assigned as the new NHSN Facility Administrator, begin the new NHSN user onboarding process

# Where To Report

- First, the Healthcare Personnel Safety (HPS) Component in NHSN must be activated.
  - Do not de-activate other checked components, such as the LTC component.





# Activating the HPS Component

- Facility Administrator logs into SAMS:  
<https://nhsn2.cdc.gov/nhsn/>
  - Click “NHSN Reporting”
- From the Home Page, click “Facility” then “Add/Edit Component”
  - Check box next to Healthcare Personnel Safety
- Facility Administrator adds HPS Component Primary Contact
  - Enter name, phone, e-mail, and address for person to be contacted if CDC/NHSN has updates or questions about the HPS Component



Components Followed			
Follow/ Followed	Component	Activated	
<input type="checkbox"/>	Biovigilance		
<input type="checkbox"/>	Dialysis		
<input checked="" type="checkbox"/>	Healthcare Personnel Safety	10/18/2022	
<input checked="" type="checkbox"/>	Long Term Care Facility	01/28/2020	
<input type="checkbox"/>	Neonatal		
<input type="checkbox"/>	Outpatient Procedure		
<input type="checkbox"/>	Patient Safety		

# Activating the HPS Component (cont.)

- Facility Administrator adds HPS Component Primary Contact as a user within the NHSN facility
  - Click “Users” on the navigation bar, then click “Add”
  - Complete “Add User” screen mandatory fields
    - User ID – created by the facility
    - First Name
    - Last Name
    - E-mail Address – Must be an active/correct address for the user
- Other users are added by the Facility Administrator or new HPS Component Primary Contact

# Influenza Vaccination Reporting

## Required and Optional Reporting Forms

- After enrolling in NHSN and/or activating the HPS Component and adding users:
  - Complete Required Forms
    - HCP Influenza Vaccination Summary Form
  - Complete Optional Form
    - Seasonal Survey on Influenza Vaccination Programs for HCP

# Influenza Vaccination Reporting

## Log into SAMS

- You can access the activity home page by clicking:  
<https://nhsn2.cdc.gov/nhsn/>
- Level 3 SAMS access is needed to enter data into the HPS Component

For assistance with SAMS, contact the SAMS Help Desk at 1-877-681-2901 or [samshelp@cdc.gov](mailto:samshelp@cdc.gov)

External Partners

SAMS Credentials

SAMS Multi-factor Login

SAMS Username

SAMS Password

OR

Sign on with a SAMS Grid Card or Mobile Soft Token

Login

Forgot Your Password?

For External Partners who login with only a SAMS issued UserID and Password.

For External Partners who have been issued a SAMS Multi-factor token(s).

## NHSN Landing Page

Welcome to the NHSN Landing Page



Select component:

Healthcare Personnel Safety

Select facility/group:

Fac: Joy LTC Facility (ID 30074)

Submit

# Influenza Vaccination Reporting

## HCP Influenza Vaccination Summary Data

- Click “Vaccination Summary” then “Annual Vaccination Flu Summary”
- Select “Add”
- Click “Continue”

The screenshot displays the NHSN Home navigation menu on the left and the 'Add Summary Data' page on the right. The navigation menu includes: NHSN Home, Alerts, Reporting Plan, HCW, Lab Test, Exposure, Prophylaxis/Treatment, Import/Export, Vaccination Summary, Surveys, and Analysis. The 'Vaccination Summary' menu item is highlighted with a yellow circle '1'. A dropdown menu is open under 'Vaccination Summary', showing 'Annual Vaccination Flu Summary' (highlighted with a yellow circle '2') and 'Weekly Flu Vaccination Summary'. The 'Annual Vaccination Flu Summary' dropdown menu is open, showing 'Add' (highlighted with a yellow circle '3'), 'Find', and 'Incomplete'. On the right side of the page, the 'Summary Data Type' is set to 'Influenza Vaccination Summary'. Below this, there are 'Continue' and 'Back' buttons, with the 'Continue' button highlighted by a yellow circle '4'.

# Influenza Vaccination Reporting

## HCP Influenza Vaccination Summary Data (cont.)

- “Influenza” and “Seasonal” are the default choices for vaccination type and influenza subtype
- Select appropriate flu season in drop-down box (e.g., 2022-2023)

**NHCN Home**

- Alerts
- Reporting Plan ▶
- HCW ▶
- Lab Test ▶
- Exposure ▶
- Prophy/Treat ▶
- Import/Export

### Add Influenza Vaccination Summary

Mandatory fields marked with \*

Record the cumulative number of healthcare personnel (HCP) for each category below for the influenza season being tracked.

Facility ID \*: Joy LTC Facility (30074)

Vaccination type \*: Influenza ▼

Influenza subtype \*: Seasonal ▼

Flu Season \*: ▼

# Influenza Vaccination Reporting

## HCP Influenza Vaccination Summary

- Data are collected on denominator and numerator categories
  - Denominator categories:
    - HCP must be physically present in the facility for at least 1 working day between October 1 through March 31
    - Includes both full-time and part-time HCP
      - Employee HCP
      - Non-employee HCP: Licensed independent practitioners (physicians, advanced practice nurses, and physician assistants)
      - Non-employee HCP: Adult students/trainees and volunteers
  - Numerator categories:
    - Influenza vaccinations, medical contraindications, declinations, and unknown status
- Facilities are required to report all numerator categories for the three denominator categories

# Influenza Vaccination Reporting

## Saving HCP Influenza Vaccination Data

- Click “Save” to save the data

Date Last Modified: 08/26/2022

HCP categories	Employee HCP	Non-Employee HCP		
	Employees (staff on facility payroll) *	Licensed independent practitioners: Physicians, advanced practice nurses, & physician assistants *	Adult students/trainees & volunteers *	Other Contract Personnel
1. Number of HCP who worked at this healthcare facility for at least 1 day between October 1 and March 31	100	100	50	0
2. Number of HCP who received an influenza vaccine at this healthcare facility since influenza vaccine became available this season	100	100	50	0
3. Number of HCP who provided a written report or documentation of influenza vaccination outside this healthcare facility since influenza vaccine became available this season	0	0	0	0
4. Number of HCP who have a medical contraindication to the influenza vaccine	0	0	0	0
5. Number of HCP who declined to receive the influenza vaccine	0	0	0	0
6. Number of HCP with unknown vaccination status (or criteria not met for questions 2-5 above)	0	0	0	0

Custom Fields

Comments

**Save** Delete Back



# Influenza Vaccination Reporting

## Editing HCP Influenza Vaccination Data (cont.)

- Click “Edit” to modify existing data

Date Last Modified: 08/26/2022

HCP categories	Employee HCP	Non-Employee HCP		
	Employees (staff on facility payroll) *	Licensed independent practitioners: Physicians, advanced practice nurses, & physician assistants *	Adult students/trainees & volunteers *	Other Contract Personnel
1. Number of HCP who worked at this healthcare facility for at least 1 day between October 1 and March 31	100	100	50	0
2. Number of HCP who received an influenza vaccine at this healthcare facility since influenza vaccine became available this season	100	100	50	0
3. Number of HCP who provided a written report or documentation of influenza vaccination outside this healthcare facility since influenza vaccine became available this season	0	0	0	0
4. Number of HCP who have a medical contraindication to the influenza vaccine	0	0	0	0
5. Number of HCP who declined to receive the influenza vaccine	0	0	0	0
6. Number of HCP with unknown vaccination status (or criteria not met for questions 2-5 above)	0	0	0	0

Custom Fields

Comments



# Common Issues (last season)

- NHSN-designated FA is no longer employed at the facility.
- FA and/or other NHSN users did not have Level 3 access.
- LTC component was de-activated while trying to activate the HPS component.
- Facilities not aware of the reporting deadline.

# How To Be Prepared

- Ensure each entity has multiple NHSN users who have admin rights assigned to them.
- Ensure the person listed as FA is still with the facility.
- Ensure all NHSN users have Level 3 access.
  - If you do not currently have Level 3 access, you should have received an invitation from NHSN.
  - To request Level 3 access, please do so in NHSN-Service now or email [NHSN@cdc.gov](mailto:NHSN@cdc.gov) and put “SAMS Level 3 Access” in the email subject line.

# Questions or Need Help?

Please use **NHSN-ServiceNow** to submit questions to the NHSN Help Desk. The new portal can be accessed [here](#) and should be used in place of [nhsn@cdc.gov](mailto:nhsn@cdc.gov), [nhsntrain@cdc.gov](mailto:nhsntrain@cdc.gov), and [nhsndua@cdc.gov](mailto:nhsndua@cdc.gov).

ServiceNow will help the NHSN team respond to your questions faster. Users will be authenticated using CDC's Secure Access Management Services (SAMS), the same way you access NHSN. If you do not have a SAMS login, or are unable to access ServiceNow, you can still email the NHSN Help Desk at [nhsn@cdc.gov](mailto:nhsn@cdc.gov).

For more information, please contact Centers for Disease Control and Prevention  
1600 Clifton Road NE, Atlanta, GA 30333  
Telephone, 1-800-CDC-INFO (232-4636) / TTY: 1-888-232-6348  
E-mail: [cdcinfo@cdc.gov](mailto:cdcinfo@cdc.gov) Web: [www.cdc.gov](http://www.cdc.gov)

# Resources for HCP Flu Reporting

## Where can facilities access training materials?

- Materials about annual HCP influenza vaccination data reporting are organized under the “Annual” reporting headings on this webpage: [HCP Flu Vaccination | HPS | NHSN | CDC](#).

## What are key training materials for LTCFs?

- This slide deck reviews how LTC facilities can report annual HCP influenza vaccination data through NHSN: [HCP Influenza Vaccination Summary \(cdc.gov\)](#).
- This operational guidance document outlines the CMS reporting requirement: [Operational Guidance for Skilled Nursing Facilities to Report Annual Influenza Vaccination Data to CDC’s NHSN](#).
- There will be a refresher training for LTCFs this fall. Registration information will be provided at a later date.

## Who do facilities contact with questions?

- Please direct all questions regarding CMS SNF QRP requirements and deadlines to [SNFQualityQuestions@cms.hhs.gov](mailto:SNFQualityQuestions@cms.hhs.gov).
- For questions on entering annual HCP influenza vaccination summary data through NHSN, please e-mail [nhsn@cdc.gov](mailto:nhsn@cdc.gov) with “HPS Flu Summary – LTCF” in the e-mail subject line.

# NHSN Optional Reporting of Influenza and RSV Vaccination for LTC Residents

# Is reporting Influenza and RSV vaccines for LTCF residents required?

- Reporting for influenza and RSV is **optional**
  - There are not currently any federal regulations for reporting these vaccines in this population
  - Reporting is still highly encouraged!

<https://www.cdc.gov/nhsn/pdfs/covid19/ltcf/respiratory-pathogens-vaccination-webinar-sept-2023-508.pdf>

# Objectives

## ★ Reporting for Respiratory Pathogens Vaccines and Cases ★

- Highlight **optional influenza and RSV** reporting for LTCF Residents:
  - Weekly influenza and RSV vaccination
  - Weekly positive influenza and RSV cases
- Review recent changes and updates:
  - Review **optional** collection forms
  - Review language and website changes
  - Discuss frequently asked questions

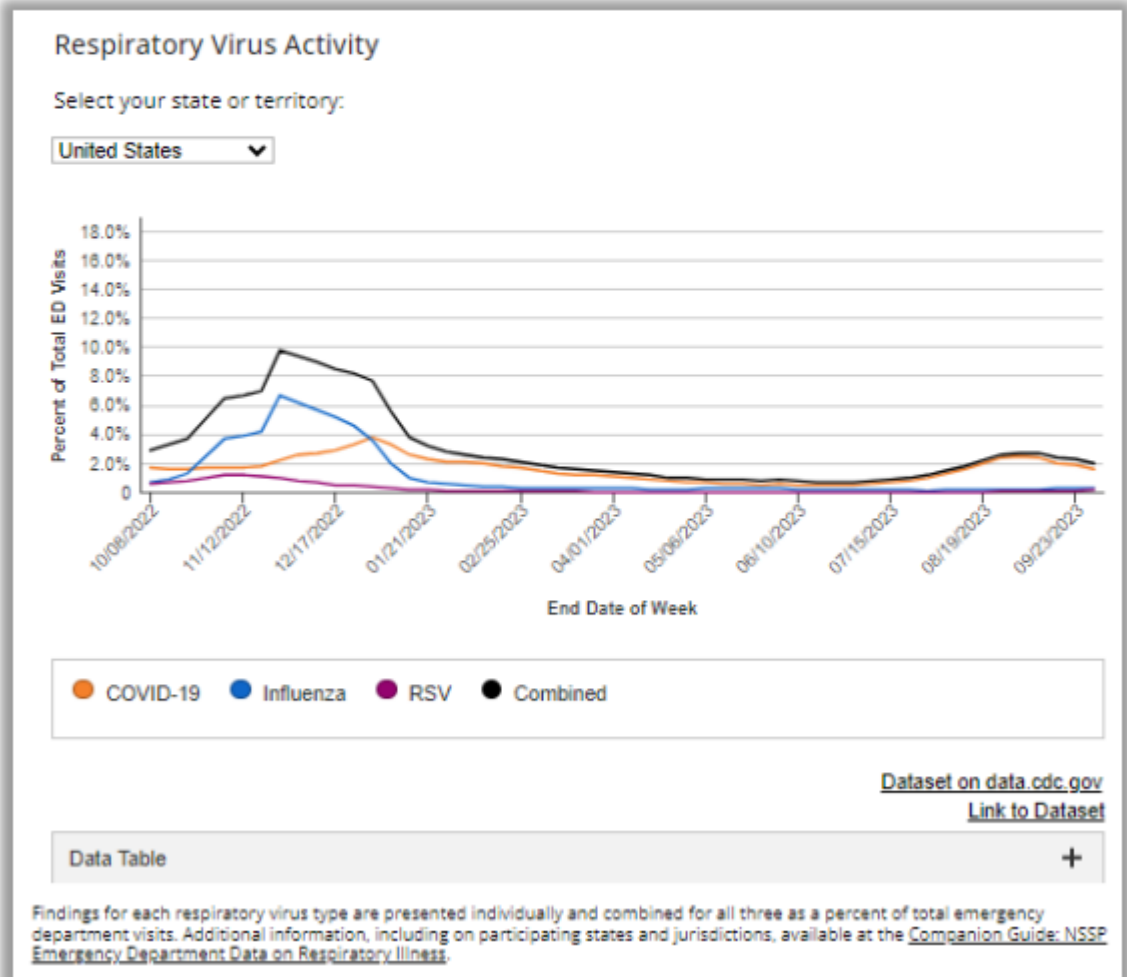
**There are no changes for COVID-19 case or vaccination reporting**



# The "Big Three" Respiratory Pathogens

- COVID-19
- Influenza
- Respiratory Syncytial Virus Infection (RSV)

**Vaccines are available for all 3 of these respiratory pathogens!**



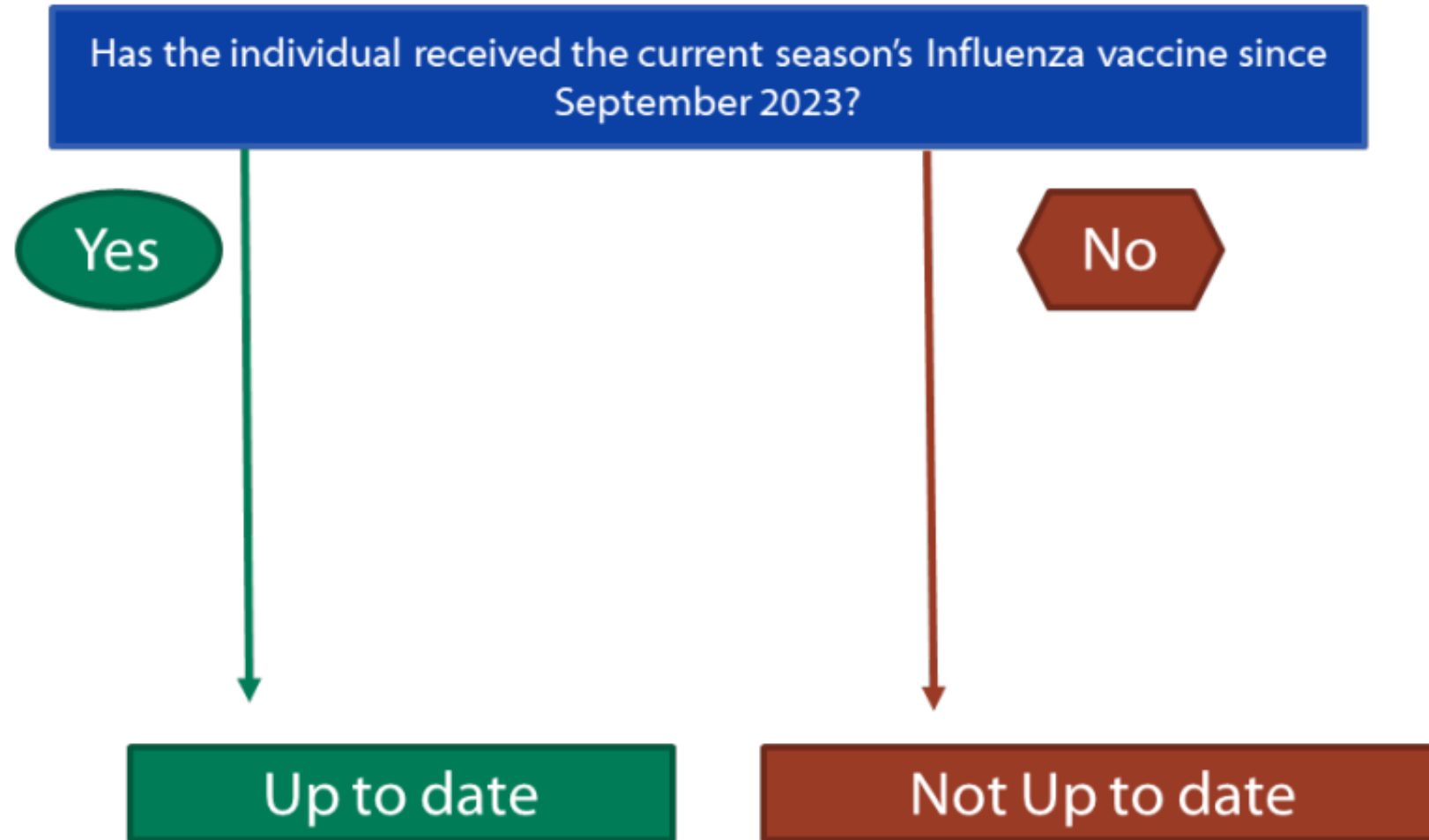
# What is Considered Up to Date for these vaccines?

	2023-2024 Influenza	RSV	2023 – 2024 COVID–19
Definition of up to date:	Received an influenza vaccine any time from when it first became available in September 2023  Key Terms Document coming soon!		

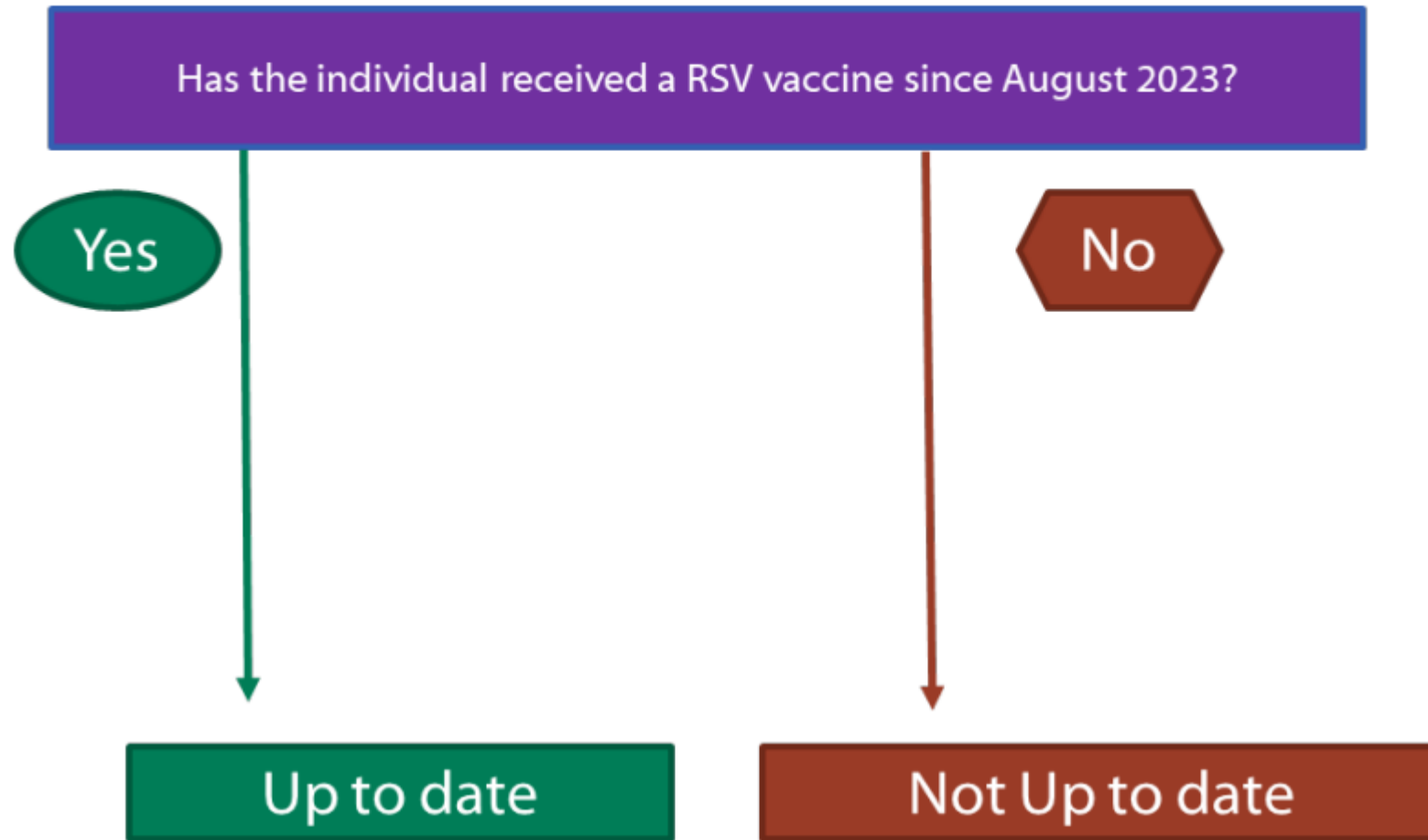
# What is Considered Up to Date for these vaccines? (Cont.)

	2023-2024 Influenza	RSV	2023 – 2024 COVID-19
<b>Definition of up to date:</b>	<p>Received an influenza vaccine any time from when it first became available in September 2023</p> <p>Key Terms Document coming soon!</p>	<p>Received RSV vaccination any time from when it first became available in August 2023</p> <p>Key Terms Document coming soon!</p>	

# Up to Date with annual Influenza Vaccine



# Up to Date with Respiratory Syncytial Virus Vaccines



<https://www.cdc.gov/nhsn/pdfs/covid19/litcf/respiratory-pathogens-vaccination-webinar-sept-2023-508.pdf>

# Overview of Vaccination Reporting for LTCF Residents

- Overview Vaccination Data Collection Forms
  - **Continue reporting COVID-19 vaccination per CMS requirements**
  - Optional Influenza and RSV vaccination forms
  - Reporting tips
- .CSV Summary Vaccination Reporting
  - Key Points
  - Overview of Form

<https://www.cdc.gov/nhsn/pdfs/covid19/ltcf/respiratory-pathogens-vaccination-webinar-sept-2023-508.pdf>

# Influenza and RSV Vaccine Form

- Flu/RSV Total Residents (Question 1) is auto-populated from COVID-19 Residents tab
- 4 data fields for Flu/RSV vaccinations
  - Number of up to date
  - Number of medical contraindications
  - Number offered but declined
  - Number other/unknown
- The 4 data fields need to add up to the number reported in Total Residents (Question 1)

**Edit Vaccine Data**

COVID-19 Vaccine: HCP   COVID-19 Vaccine: Residents   **Influenza/RSV: Residents (Optional)** New Optional Tab

Resident Flu/RSV Cumulative Vaccination Summary for Long-Term Care Facilities

Date Created: \_\_\_\_\_

\*Facility ID: \_\_\_\_\_ \*Vaccination type: Respiratory   Facility CCN #: \_\_\_\_\_

\*Week of Data Collection: 10/09/2023 - 10/15/2023   \*Date Last Modified: \_\_\_\_\_

Cumulative Vaccination Coverage

Optional Reporting: These data are NOT required.

<b>Total Residents</b>	1. *Number of residents staying in this facility for at least 1 day during the week of data collection	100
	2. *Number of residents in question #1 who are up to date with Influenza vaccination for current season	90
	Among those not in Question #2, reason not up to date:	
<b>Influenza Vaccination</b>	2.1 *Medical contraindication to influenza vaccine	2
	2.2 *Offered but declined influenza vaccine	8
	2.3 *Other/unknown influenza vaccination status	0
	3. *Number of residents in question #1 who are up to date with RSV vaccination	
	Among those not in Question #3, reason not up to date:	
<b>RSV Vaccination</b>	3.1 *Medical contraindication to RSV vaccine	
	3.2 *Offered but declined RSV vaccine	
	3.3 *Other/unknown RSV vaccination status	

Clinically significant adverse events should be reported to the Vaccine Adverse Event Reporting System (VAERS) at <https://vaers.hhs.gov/reportevent.html>. To help identify reports from NHSN sites, please enter your NHSN orgID in Box 26 of the VAERS form.

Clinically significant adverse events include vaccine administration errors and serious adverse events (such as death, life-threatening conditions, or inpatient hospitalization) that occur after vaccination, even if it is not certain that vaccination caused the event.

Other clinically significant adverse events may be described in the provider emergency use authorization (EUA) fact sheets or prescribing information for the COVID-19 vaccine(s). Healthcare providers should comply with VAERS reporting requirements described in EUAs or prescribing information.

By saving these data in NHSN, facilities are agreeing to the following:

- The data reported are consistent with definitions outlined in NHSN surveillance protocols (including tables of instructions and frequently asked questions).
- The data will be sent to the Centers for Medicare and Medicaid Services (CMS) to fulfill CMS quality reporting requirements (when applicable).

# Reporting Influenza and RSV Vaccinations

- You can report:
  - Both Flu and RSV vaccination questions
  - Only Flu vaccination (questions 2-2.3)
  - Only RSV vaccination (questions 3-3.3)
  - Neither
  
- If you report in any data field for either vaccine. You must complete all vaccination questions for the associated vaccine.
  
- Users choose how often to report
  - Ideally in same weekly reporting cadence as COVID-19 Vaccine

**Edit Vaccine Data**

COVID-19 Vaccine: HCP   COVID-19 Vaccine: Residents   **Influenza/RSV: Residents (Optional)** New Optional Tab

Resident Flu/RSV Cumulative Vaccination Summary for Long-Term Care Facilities

Date Created: \_\_\_\_\_

\*Facility ID: \_\_\_\_\_ \*Vaccination type: Respiratory      Facility CCN #: \_\_\_\_\_

\*Week of Data Collection: 10/09/2023 - 10/15/2023      \*Date Last Modified: \_\_\_\_\_

**Cumulative Vaccination Coverage**

Optional Reporting: These data are NOT required.

<b>Total Residents</b>	1. *Number of residents staying in this facility for at least 1 day during the week of data collection	100
	2. *Number of residents in question #1 who are up to date with Influenza vaccination for current season	90
<b>Influenza Vaccination</b>	Among those not in Question #2, reason not up to date:	
	2.1 *Medical contraindication to influenza vaccine	2
	2.2 *Offered but declined influenza vaccine	8
	2.3 *Other/unknown influenza vaccination status	0
<b>RSV Vaccination</b>	3. *Number of residents in question #1 who are up to date with RSV vaccination	
	Among those not in Question #3, reason not up to date:	
	3.1 *Medical contraindication to RSV vaccine	
	3.2 *Offered but declined RSV vaccine	
	3.3 *Other/unknown RSV vaccination status	

Clinically significant adverse events should be reported to the Vaccine Adverse Event Reporting System (VAERS) at <https://vaers.hhs.gov/reportevent.html>. To help identify reports from NHCN sites, please enter your NHCN orgID in Box 26 of the VAERS form.

Clinically significant adverse events include vaccine administration errors and serious adverse events (such as death, life-threatening conditions, or inpatient hospitalization) that occur after vaccination, even if it is not certain that vaccination caused the event.

Other clinically significant adverse events may be described in the provider emergency use authorization (EUA) fact sheets or prescribing information for the COVID-19 vaccine(s). Healthcare providers should comply with VAERS reporting requirements described in EUAs or prescribing information.

By saving these data in NHCN, facilities are agreeing to the following:

- 1) The data reported are consistent with definitions outlined in NHCN surveillance protocols (including tables of instructions and frequently asked questions).
- 2) The data will be sent to the Centers for Medicare and Medicaid Services (CMS) to fulfill CMS quality reporting requirements (when applicable).

<https://www.cdc.gov/nhsn/pdfs/covid19/litcf/respiratory-pathogens-vaccination-webinar-sept-2023-508.pdf>



# Review the Influenza/RSV Tab after Data Change

- Review that week's Flu and RSV data after changing COVID-19 total residents
- On the Flu and RSV tab totals do not add to 80
- Their totals will need to be changed in order to match the new total in Question 1

COVID-19 Vaccine: HCP COVID-19 Vaccine: Residents Influenza/RSV Residents (Optional)

Resident Flu/RSV Cumulative Vaccination Summary for Long-Term Care Facilities

Date Created: Oct 3 2023 3:51PM Facility CCN #: [REDACTED]

\*Facility ID: [REDACTED] \*Vaccination type: Respiratory

\*Week of Data Collection: 10/02/2023 - 10/08/2023 \*Date Last Modified: Oct 3 2023 3:51PM

Cumulative Vaccination Coverage  
Optional Reporting: These data are NOT required.

Total Residents	1. * Number of residents staying in this facility for at least 1 day during the week of data collection	80
Influenza Vaccination	2. * Number of residents in question #1 who are up to date with Influenza vaccination for current season	85
	Among those not in Question #2, reason not up to date	
	2.1 * Medical contraindication to Influenza vaccine	0
	2.2 * Offered but declined Influenza vaccine	5
RSV Vaccination	2.3 * Other/unknown Influenza vaccination status	0
	3. * Number of residents in question #1 who are up to date with RSV vaccination	20
	Among those not in Question #3, reason not up to date	
	3.1 * Medical contraindication to RSV vaccine	5
	3.2 * Offered but declined RSV vaccine	60
	3.3 * Other/unknown RSV vaccination status	15

Clinically significant adverse events should be reported to the Vaccine Adverse Event Reporting System (VAERS) at <https://vaers.hhs.gov/reportevent.html>. To help identify reports from NHCN sites, please enter your NHCN orgID in Box 26 of the VAERS form.

Clinically significant adverse events include vaccine administration errors and serious adverse events (such as death, life-threatening conditions, or inpatient hospitalization) that occur after vaccination, even if it is not certain that vaccination caused the event.

Other clinically significant adverse events may be described in the provider emergency use authorization (EUA) fact sheets or prescribing information for the COVID-19 vaccine(s). Healthcare providers should comply with VAERS reporting requirements described in EUAs or prescribing information.

By saving these data in NHCN, facilities are agreeing to the following:  
1) The data reported are consistent with definitions outlined in NHCN surveillance protocols (including tables of instructions and frequently asked questions).

Save Cancel

<https://www.cdc.gov/nhsn/pdfs/covid19/litcf/respiratory-pathogens-vaccination-webinar-sept-2023-508.pdf>

# Weekly Vaccination Calendar

- Verify data submission on the Weekly Vaccination Calendar
- After saving data, it will be highlighted green
- Tan means data has not been submitted

**Vaccination Summary Data**

Click a cell to begin entering data for the week which counts are reported.  
Reporting of medical events or health problems that occur after vaccination (possible side effects) is encouraged, even if you

25 September 2023 - 05 November 2023

Record Complete Record Incomplete

**Weekly Vaccination Calendar**

09/25/2023 (Monday) - 10/01/2023 (Sunday)

- COVID-19: HCP
- COVID-19: Residents
- FLU/RSV: Residents

10/02/2023 (Monday) - 10/08/2023 (Sunday)

- COVID-19: HCP
- COVID-19: Residents
- FLU/RSV: Residents

<https://www.cdc.gov/nhsn/pdfs/covid19/litcf/respiratory-pathogens-vaccination-webinar-sept-2023-508.pdf>

# How frequently do I report Influenza and RSV vaccines for Long Term Care Residents?

- The Flu/RSV form is set up for weekly reporting
- Ideally, use same weekly reporting cadence as COVID-19 vaccines
- Users have ability to choose which weeks to report

<https://www.cdc.gov/nhsn/pdfs/covid19/litcf/respiratory-pathogens-vaccination-webinar-sept-2023-508.pdf>

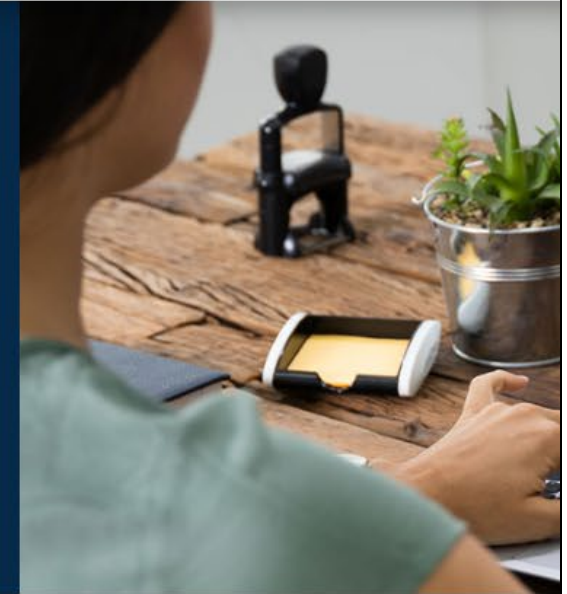
# Key Points for Vaccination

- For surveillance purposes, NHSN will refer to surveillance of COVID-19, RSV, and Influenza vaccination as **COVID-19/Respiratory Pathogens Vaccination**
- Reporting Influenza and RSV Vaccines for Residents is **OPTIONAL**
- Report by entering data directly into NHSN summary form or using .CSV file
  - Flu/RSV is a separate .CSV form from the COVID-19 .CSV
  - Person level forms will be available in June 2024
- Materials will be available through LTCF COVID-19/Respiratory Pathogens Vaccination website in the next week

<https://www.cdc.gov/nhsn/pdfs/covid19/ltcf/respiratory-pathogens-vaccination-webinar-sept-2023-508.pdf>

# NHSH Shop Talk for Long-Term Care Facilities

A shop talk is a webinar hosted by Alliant to share information and resources



## Shop Talks & Quickinars

<https://quality.allianthealth.org/topic/shop-talks/>

# Contact the Patient Safety Team

[patientsafety@alliantHealth.org](mailto:patientsafety@alliantHealth.org)



**Paula St. Hill, DrPH, MPH, CIC, A-IPC**  
Technical Advisor, Infection Prevention  
[Paula.Sthill@allianthealth.org](mailto:Paula.Sthill@allianthealth.org)



**Amy Ward, MS, BSN, RN, CIC**  
Patient Safety Manager  
[Amy.Ward@AlliantHealth.org](mailto:Amy.Ward@AlliantHealth.org)



**Donald Chitanda, MPH, CIC LTC-CIP**  
Technical Advisor, Infection Prevention  
[Donald.Chitanda@AlliantHealth.org](mailto:Donald.Chitanda@AlliantHealth.org)



**Erica Umeakunne, MSN, MPH, APRN, CIC**  
Infection Prevention Specialist  
[Erica.Umeakunne@AlliantHealth.org](mailto:Erica.Umeakunne@AlliantHealth.org)

**Questions?**



# Mark Your Calendar!

Shop Talk

3<sup>rd</sup> Thursdays at 2 p.m. ET



[Registration Link](#)

Visit our website for more info:

<https://quality.allianthealth.org/topic/shop-talks/>



# Nursing Home and Partnership for Community Health: CMS 12th SOW GOALS



## OPIOID UTILIZATION AND MISUSE

- Promote opioid best practices
- Reduce opioid adverse drug events in all settings



## PATIENT SAFETY

- Reduce hospitalizations due to c. diff
- Reduce adverse drug events
- Reduce facility acquired infections



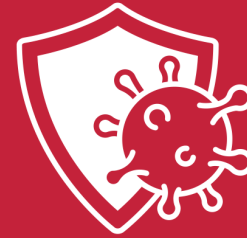
## CHRONIC DISEASE SELF-MANAGEMENT

- Increase instances of adequately diagnosed and controlled hypertension
- Increase use of cardiac rehabilitation programs
- Reduce instances of uncontrolled diabetes
- Identify patients at high-risk for kidney disease and improve outcomes



## CARE COORDINATION

- Convene community coalitions
- Reduce avoidable readmissions, admissions to hospitals and preventable emergency department visits
- Identify and promote optimal care for super utilizers



## COVID-19

- Support nursing homes by establishing a safe visitor policy and cohort plan
- Provide virtual events to support infection control and prevention
- Support nursing homes and community coalitions with emergency preparedness plans



## IMMUNIZATION

- Increase influenza, pneumococcal, and COVID-19 vaccination rates



## TRAINING

- Encourage completion of infection control and prevention trainings by front line clinical and management staff

# Making Health Care Better Together



ALABAMA • FLORIDA • GEORGIA • KENTUCKY • LOUISIANA • NORTH CAROLINA • TENNESSEE



@AlliantQIO



Alliant Health Solutions



@AlliantQIO



AlliantQIO

This material was prepared by Alliant Health Solutions, a Quality Innovation Network–Quality Improvement Organization (QIN – QIO) under contract with the Centers for Medicare & Medicaid Services (CMS), an agency of the U.S. Department of Health and Human Services (HHS). Views expressed in this material do not necessarily reflect the official views or policy of CMS or HHS, and any reference to a specific product or entity herein does not constitute endorsement of that product or entity by CMS or HHS. Publication No. 12SOW-AHS-QIN-QIO TO1-NH TO1-PCH–6016-07/15/24



QIN-QIO  
Quality Innovation Network -  
Quality Improvement Organizations  
CENTERS FOR MEDICARE & MEDICAID SERVICES  
QUALITY IMPROVEMENT & INNOVATION GROUP