

TRANSPLANT BLOOD SAMPLE STEPS TO SUCCESS

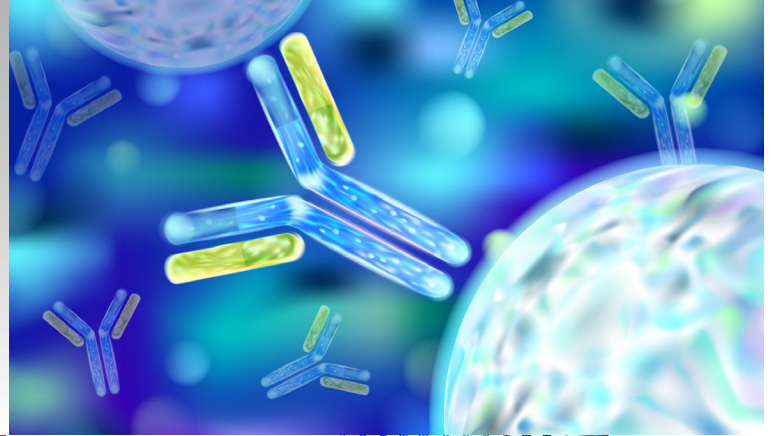
WHAT is a PRA test?

When a patient makes antibodies against foreign proteins, this is called panel reactive antibodies—PRA. The result is expressed as a percentage between 0 and 100% and represents the probability a recipient will match any given donor. A 60% PRA suggests the recipient will only match 40% of available donors. The higher the PRA, the more difficult it becomes to find a suitable donor.



WHY is it important?

Panel-reactive antibodies can change due to pregnancy, previous transplants, and blood transfusions. **It is necessary to have a current PRA on file in order to match a recipient with a donor organ.** Also, when PRAs change and reach the 99% PRA status, patients receive more priority points that could open them to more offers from the UNOS wait list.



WHEN should we send it?

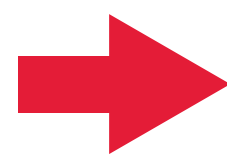
Every. Single. Month.

The sample is only good for 30 days.



HOW do we draw and process it?

Follow the procedure exactly as directed by the transplant center.



FOLLOW
Instructions

WHAT happens if we don't send it?

Because the sample is required for organ offers, a patient without a current sample can be skipped over for a transplant.

**MISSED
OPPORTUNITY**

 **ALLIANT**
HEALTH SOLUTIONS



END STAGE RENAL DISEASE
NETWORKS 8 & 14

This material was prepared under Produced under contract numbers: ESRD Network 8: 75FCMC19D0005-75FCMC21F0001 and ESRD Network 14: 75FCMC19D0005-75FCMC21F0002, and the contents may not reflect CMS Policy.

We gratefully acknowledge the assistance of Methodist University Hospital Transplant Institute, TriStar Centennial Medical Center, University of Mississippi Medical Center Transplant, and Vanderbilt University Transplant Center in the development of this material.