

# FLU & VACCINE PROTECTION

## CROSSWORD PUZZLE

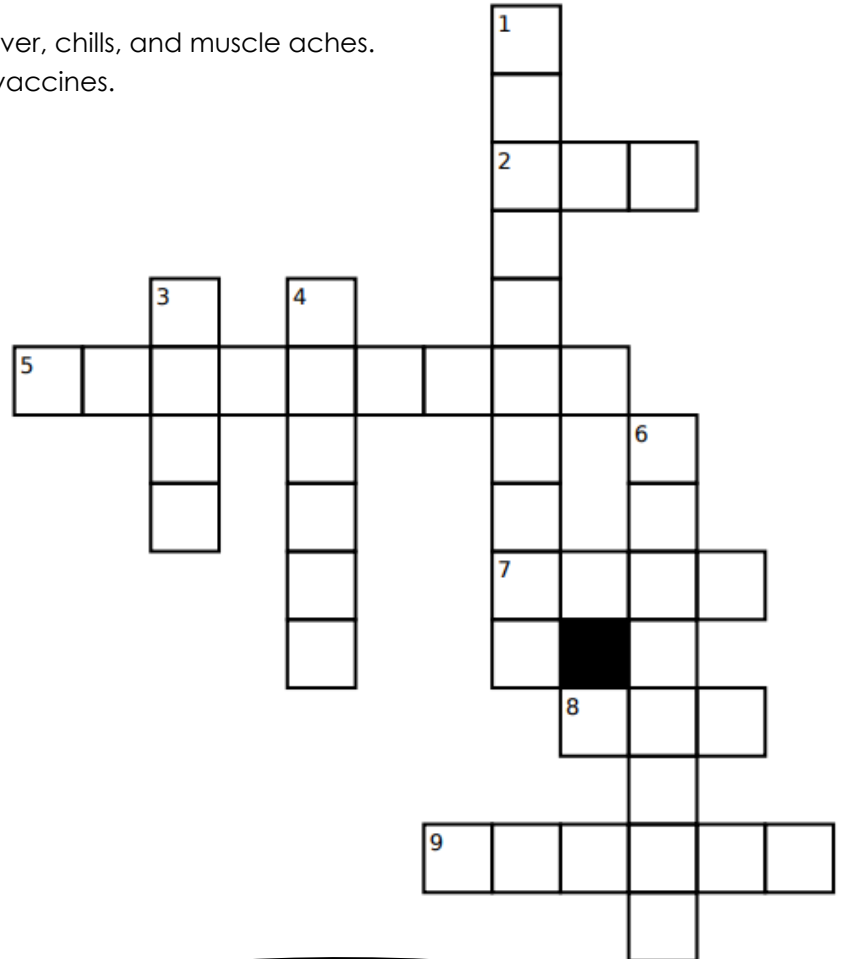
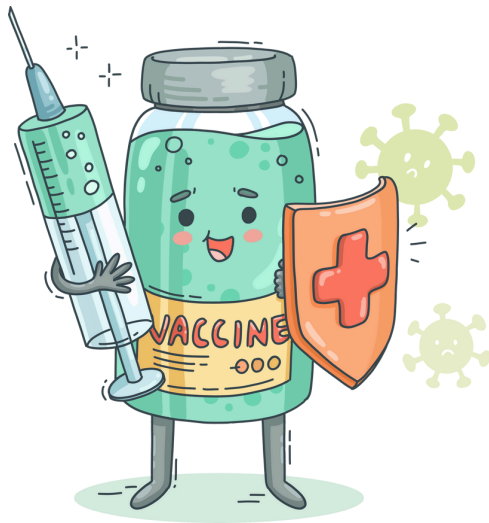
As an ESRD patient, it's vital to stay up-to-date on vaccines before winter weather hits. Complete this crossword puzzle with clues related to flu and pneumococcal vaccines, and general vaccine knowledge for dialysis patients.

### DOWN

1. \_\_\_\_ is a virus that spreads through blood and body fluids and can hurt your liver.
3. Flu vaccines should be received every \_\_\_\_.
4. Dialysis patients have a weaker \_\_\_\_ system.
6. When someone coughs or sneezes, sickness can spread through tiny \_\_\_\_ in the air.

### ACROSS

2. The \_\_\_\_20 shot is a single dose that protects the lungs without the need for additional shots.
5. This lung infection can cause fatigue, frequent coughing, fever, and difficulty breathing.
7. The flu vaccine is also called a flu \_\_\_\_.
8. This virus can cause severe illness, including fever, chills, and muscle aches.
9. Talk to your \_\_\_\_ if you have questions about vaccines.



1. Hepatitis B  
2. PCV  
3. Year  
4. Immune  
5. Pneumonia  
6. Droplets  
7. Shot  
8. Flu  
9. Doctor

### ANSWER KEY