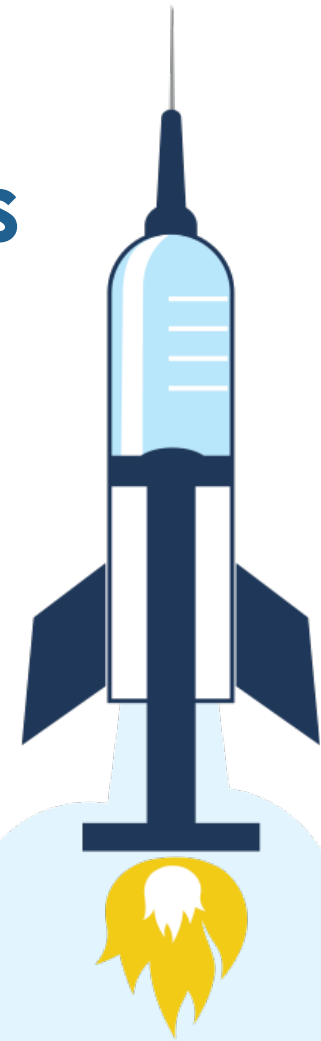


BOOST Education and Office Hours

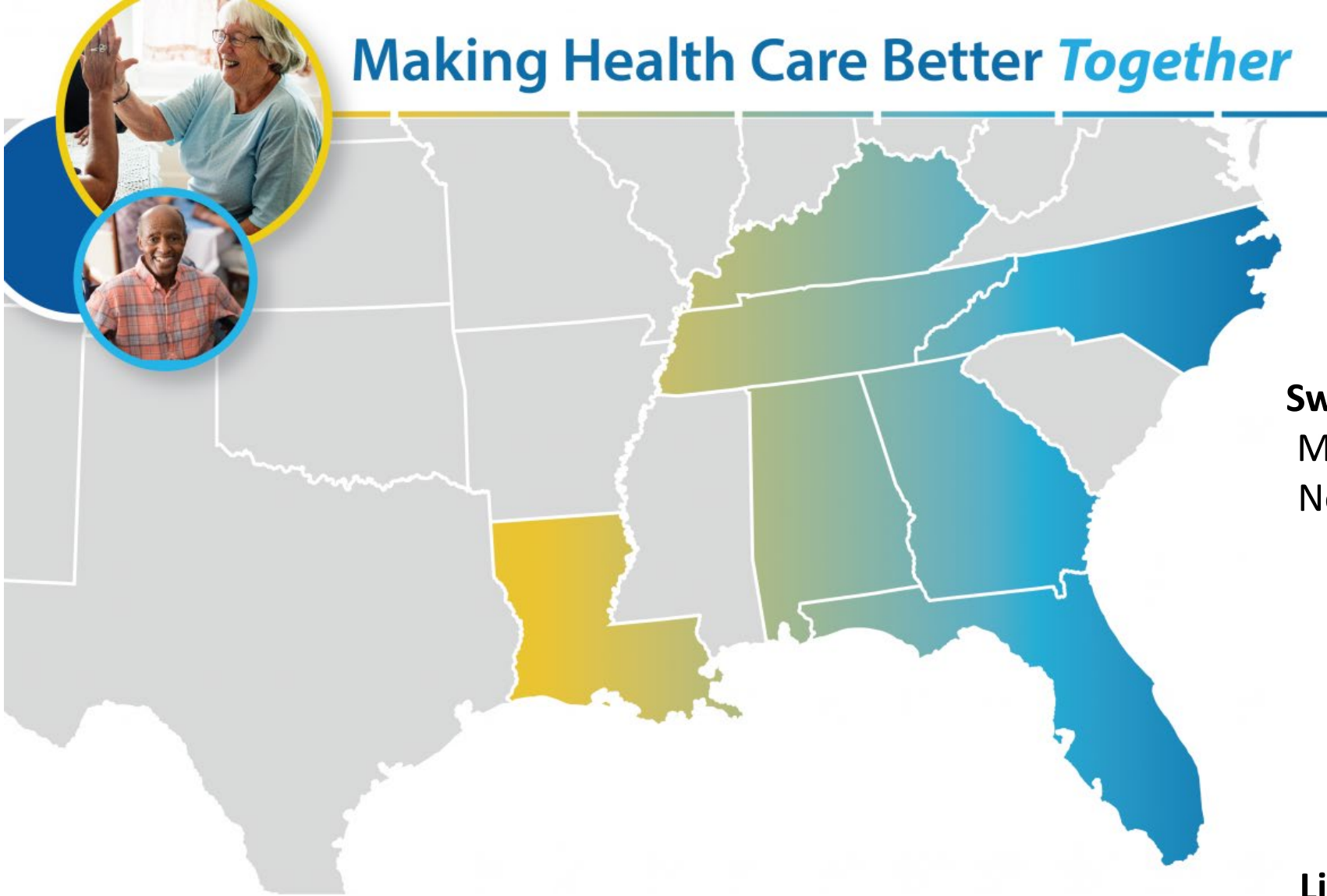
Novavax: Game Changer for the Unvaccinated



 **ALLIANT**
HEALTH SOLUTIONS

QIN-QIO
Quality Innovation Network -
Quality Improvement Organizations
CENTERS FOR MEDICARE & MEDICAID SERVICES
QUALITY IMPROVEMENT & INNOVATION GROUP

Making Health Care Better *Together*



Swati Gaur, MD, MBA, CMD, AGSF
Medical Director, Post Acute Care
Northeast Georgia Health System



Lisa Davies, CPHQ, LNHA, RD, LD
Quality Improvement Initiative Manager

About Alliant Health Solutions

Agenda

01

UPDATES ON VACCINES

02

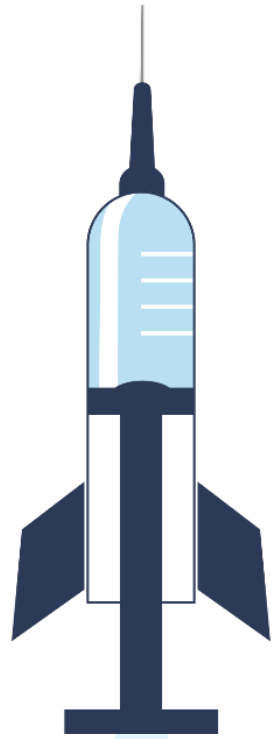
INFORMATION ON NOVAVAX - THE NEW VACCINE

03

PREPARE WITH A PROCESS

04

WHERE TO GET MORE INFORMATION



Vaccine Effectiveness (March-June 2022)

SARS-CoV-2 Infection	3 doses mRNA	69%
Hospitalizations	3 doses mRNA	90%---> 84% for Omicron
ED Visit	3 doses mRNA	83%
Mechanical Ventilation or Death	3 doses mRNA	94%

<https://covid.cdc.gov/covid-data-tracker/#vaccine-effectiveness>

Novavax: EAU on July 13, 2022

Game Changer for Those with Hesitancy Based on mRNA Vaccine



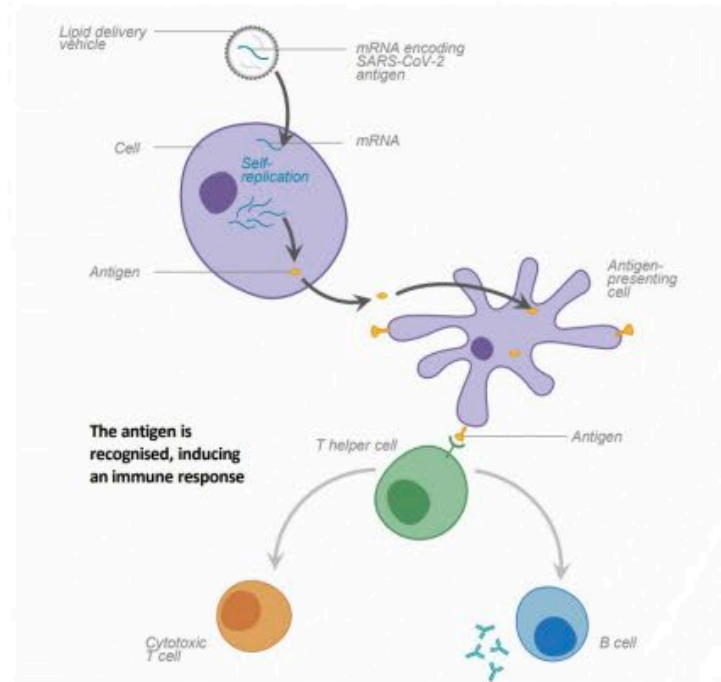
Novavax: Basic Facts

- **Number of shots:** Two doses in the primary series, given three to eight weeks apart.
- People who are moderately or severely immunocompromised should also receive two doses, given three weeks apart (a third primary dose is not currently authorized).
- **Booster shot:** Novavax COVID-19 vaccine is **not** authorized for use as a booster dose.

Mechanism of action of authorized COVID-19 vaccines

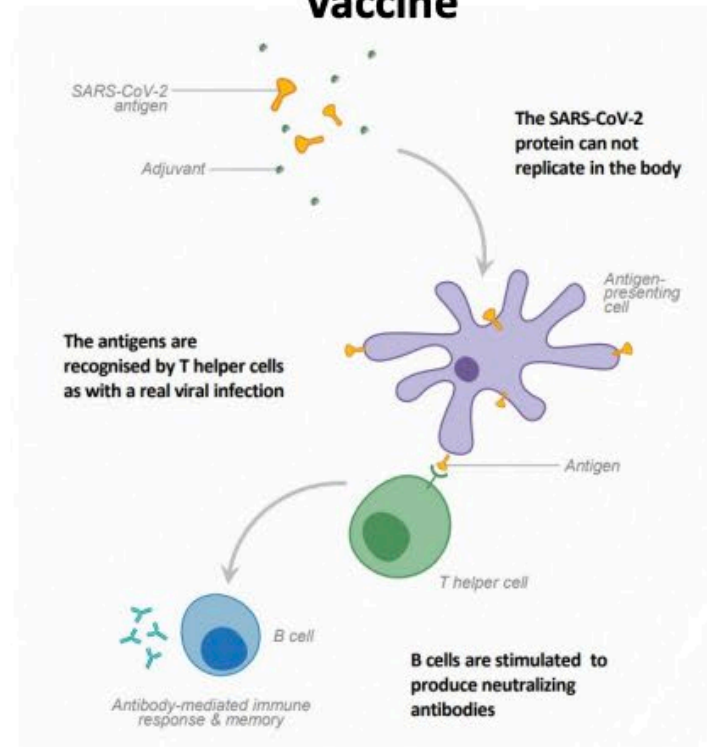
mRNA

Pfizer-BioNTech and Moderna
COVID-19 vaccines



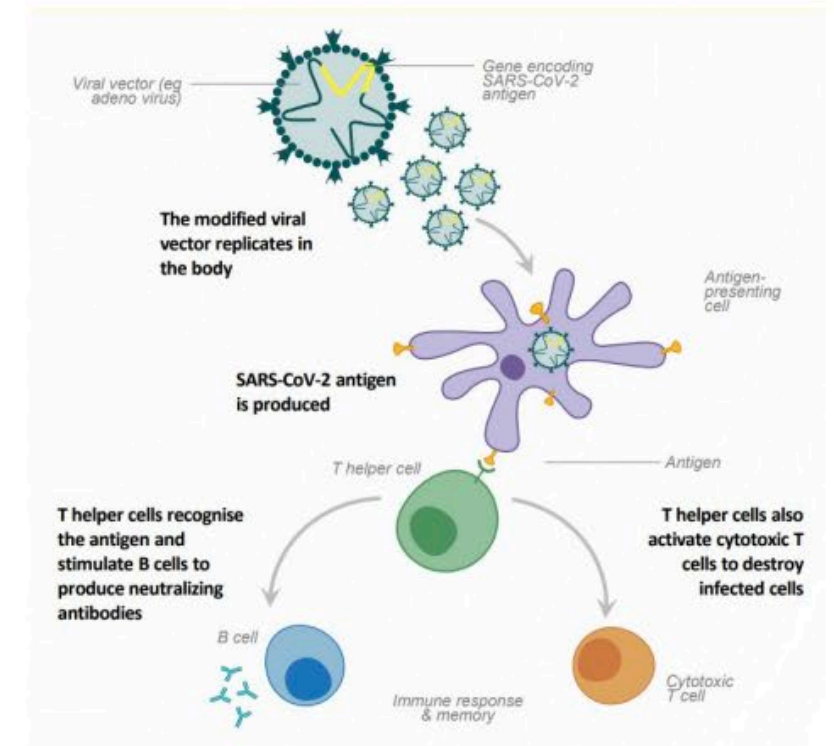
Protein subunit

Novavax COVID-19
vaccine



Viral vector

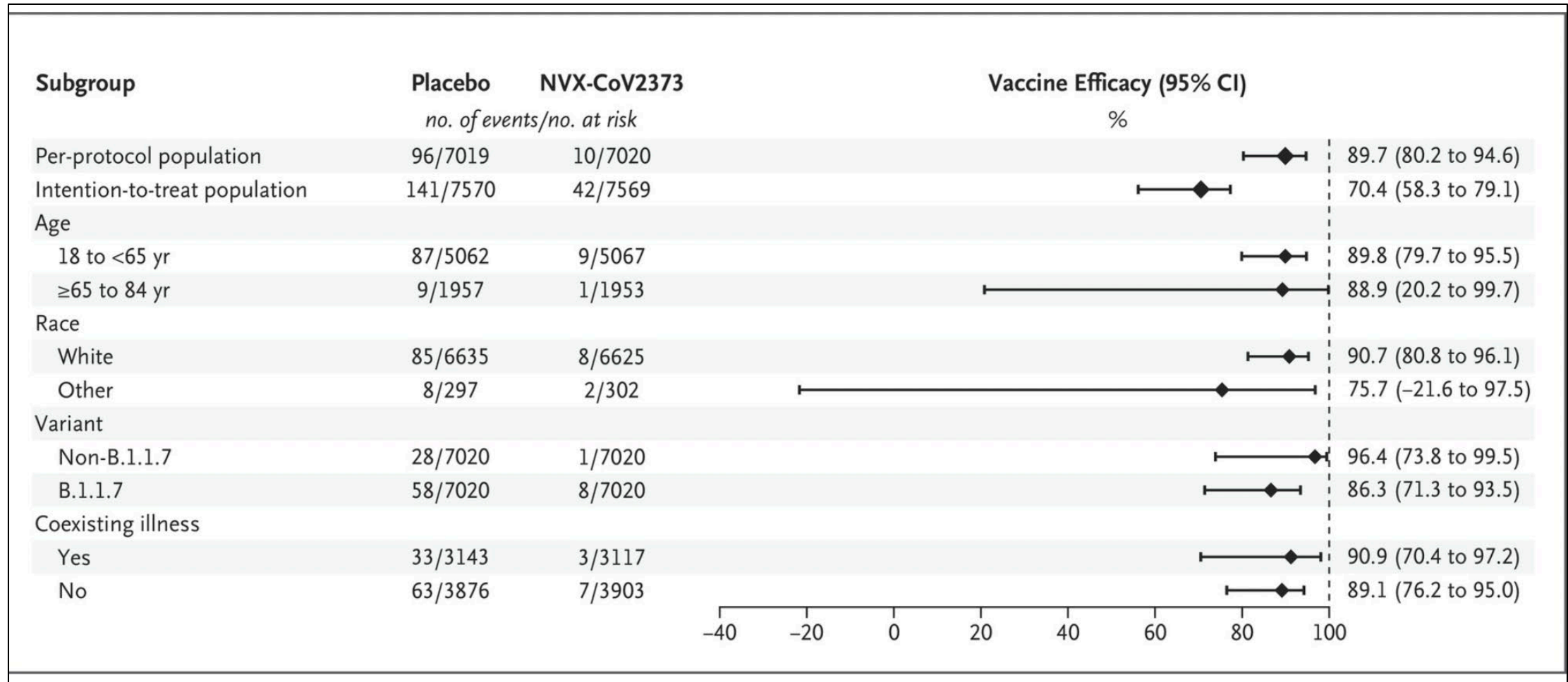
Janssen/J&J COVID-19 vaccine



What Else Do We Need To Know?

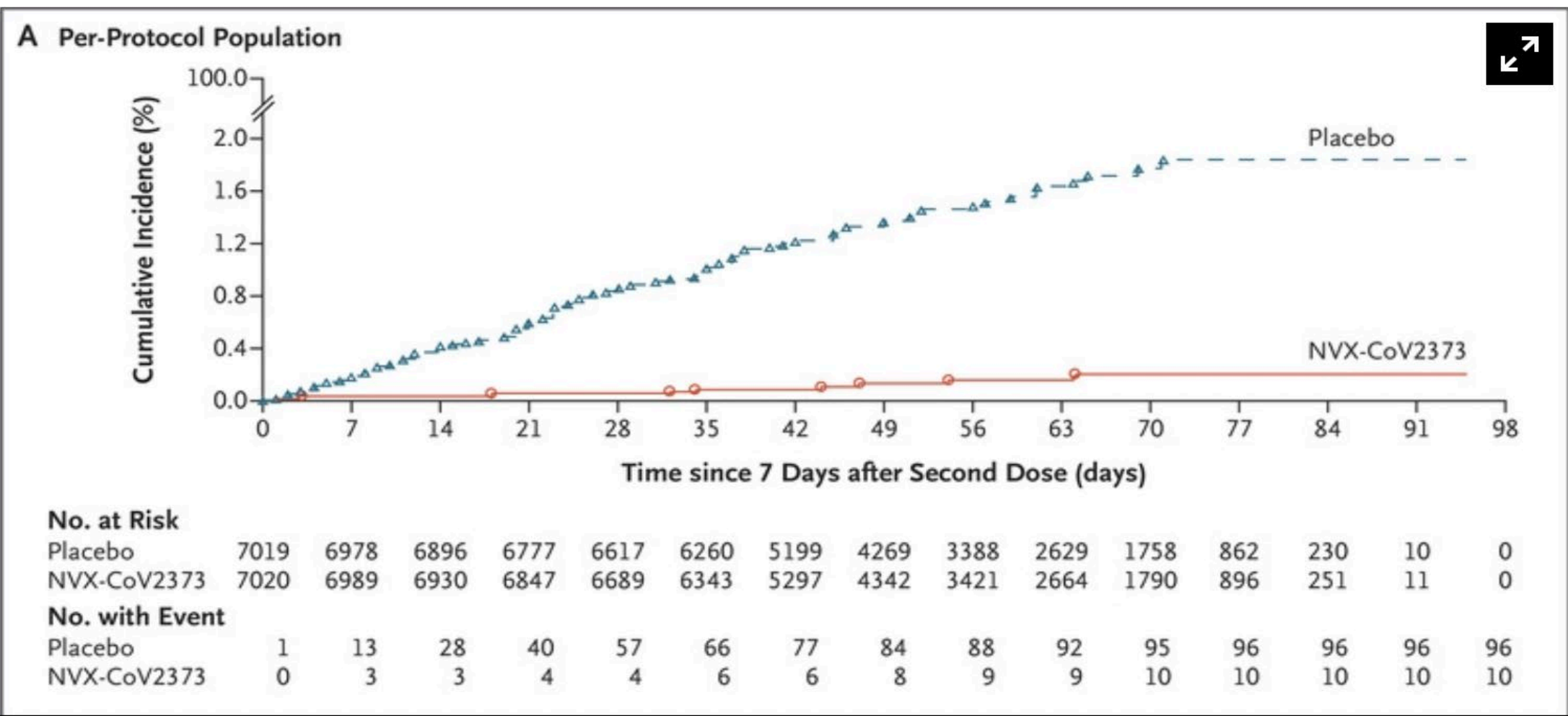
- Uses the same technology as the pertussis or influenza vaccines they already receive routinely
- Good stability at fridge temperature so it can be rolled out with the flu vaccine
- It's a more traditional vaccine that uses moth cells and tree bark
- Subunit protein vaccine

Novavax: Efficacy – Subgroup Analysis



Novovax: Efficacy

Figure 3. Kaplan–Meier Plots of Efficacy of the NVX-CoV2373 Vaccine against Symptomatic Covid-19.



Novavax: Contraindications

- Do not administer the Novavax COVID-19 Vaccine, Adjuvanted to individuals with a known history of a severe allergic reaction (e.g., anaphylaxis) to any component of the Novavax COVID-19 Vaccine, Adjuvanted (see full EUA prescribing information).

<https://www.fda.gov/media/159897/download>

Novavax: Side Effects

- Site pain/tenderness (82.2%),
- Fatigue/malaise (62.0%),
- Muscle pain (54.1%),
- Headache (52.9%),
- Joint pain (25.4%),
- Nausea/vomiting (15.6%),
- Injection site redness (7.0%),
- Injection site swelling (6.3%),
- Fever (6.0%).
- Myocarditis, pericarditis, chills, injection site pruritus, hypersensitivity reactions, and lymphadenopathy-related reactions have been reported (RARE) following administration of the Novavax COVID-19 Vaccine, Adjuvanted.

<https://www.fda.gov/media/159897/download>

Prepare Your Process

- **Access**

- Identify if your current pharmacy will be able to supply
- Expected availability and shipping timeline
- The packaging configuration of the vaccine is expected to be 10-dose vials in cartons of 10 vials each (100 doses total), with a minimum order quantity of 100 doses

- **Storage**

- Storage of unpunctured vials: Store the unpunctured multi-dose vial in a refrigerator between 36° to 46°F. **Do not freeze. Protect from light.**
- Storage after the first puncture of the vaccine vial: After the first needle puncture, hold the vial between 36° to 77°F. Discard the vial six hours after the first puncture.

Prepare Your Process

- **Identify Who Is Eligible**
 - Not approved as a booster
 - Review residents/families with refusals
 - Review religious exemptions
 - Review medical exemptions

Prepare Your Process

- **Prepare Education Process**
 - FDA fact sheet for health care providers
 - Create a bulleted fact sheet for frontline staff
 - Design process for individualized education

Implement Process

- **Design Clinics**

- Still requires coordination for optimal use of vials
- Creates a “buzz” for the unvaccinated

Questions?



Nursing Home and Partnership for Community Health:

CMS 12th SOW GOALS



OPIOID UTILIZATION AND MISUSE

- Promote opioid best practices
-
- Reduce opioid adverse drug events in all settings



PATIENT SAFETY

- Reduce hospitalizations due to c. diff
-
- Reduce adverse drug events
-
- Reduce facility acquired infections



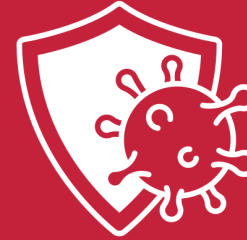
CHRONIC DISEASE SELF- MANAGEMENT

- Increase instances of adequately diagnosed and controlled hypertension
-
- Increase use of cardiac rehabilitation programs
-
- Reduce instances of uncontrolled diabetes
-
- Identify patients at high-risk for kidney disease and improve outcomes



CARE COORDINATION

- Convene community coalitions
-
- Reduce avoidable readmissions, admissions to hospitals and preventable emergency department visits
-
- Identify and promote optimal care for super utilizers



COVID-19

- Support nursing homes by establishing a safe visitor policy and cohort plan
-
- Provide virtual events to support infection control and prevention
-
- Support nursing homes and community coalitions with emergency preparedness plans



IMMUNIZATION

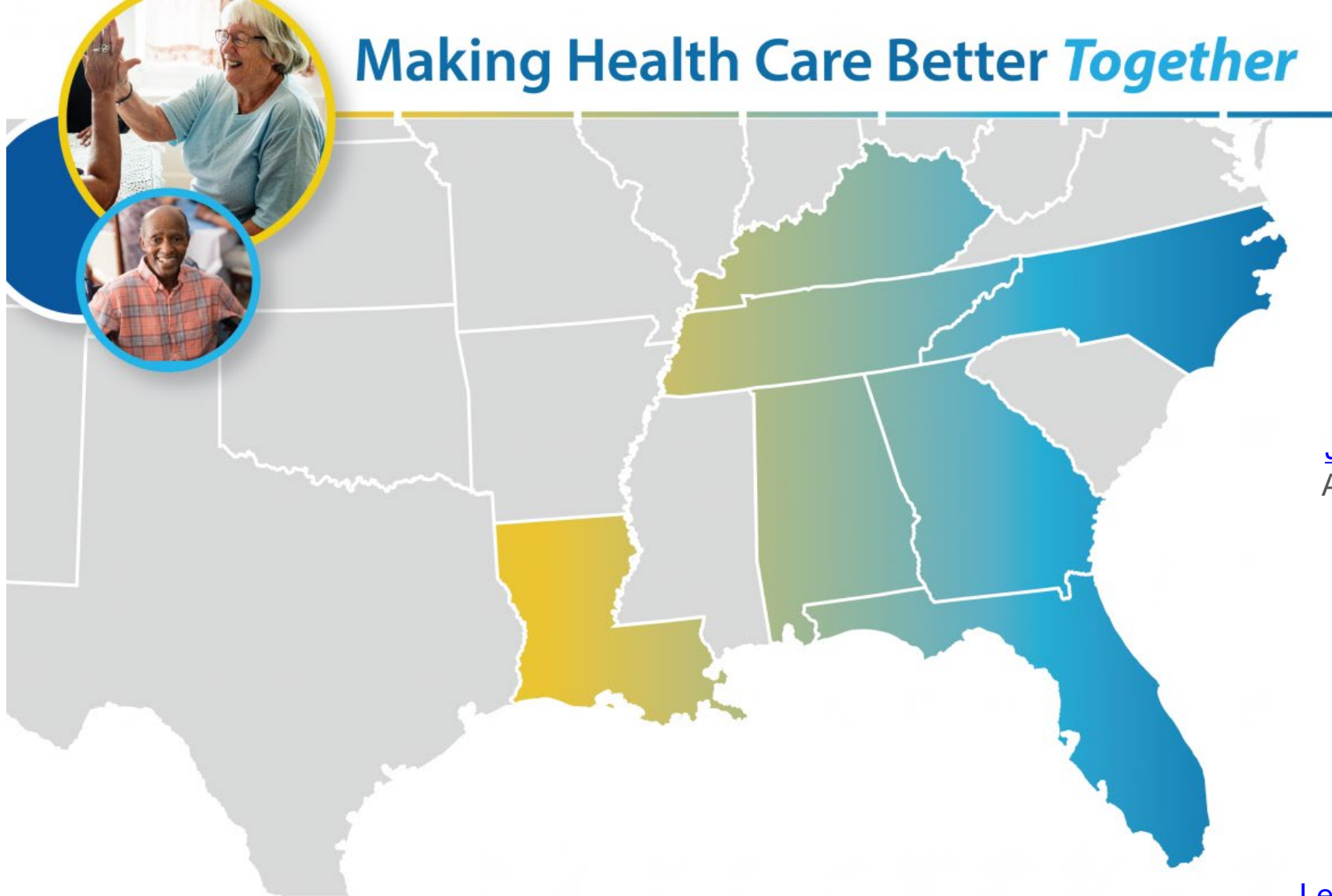
- Increase influenza, pneumococcal, and COVID-19 vaccination rates



TRAINING

- Encourage completion of infection control and prevention trainings by front line clinical and management staff

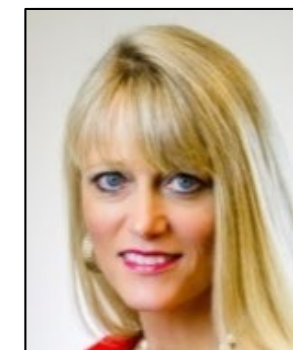
Making Health Care Better *Together*



Julie Kueker

Julie.Kueker@AlliantHealth.org

Alabama, Florida and Louisiana

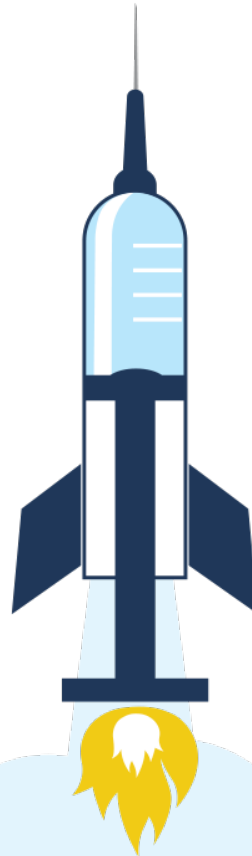


Leighann Sauls

Leighann.Sauls@AlliantHealth.org

Georgia, Kentucky, North Carolina and Tennessee

Program Directors



Thank you



@AlliantQIO



@AlliantQIO



Alliant Health Solutions



AlliantQIO

This material was prepared by Alliant Health Solutions, a Quality Innovation Network-Quality Improvement Organization (QIN – QIO) and Hospital Quality Improvement Contractor (HQIC) under contract with the Centers for Medicare & Medicaid Services (CMS), an agency of the U.S. Department of Health and Human Services (HHS). Views expressed in this material do not necessarily reflect the official views or policy of CMS or HHS, and any reference to a specific product or entity herein does not constitute endorsement of that product or entity by CMS or HHS. Publication No. 12SOW-AHS-QIN-QIO TO1-NH--2393-08/02/22