

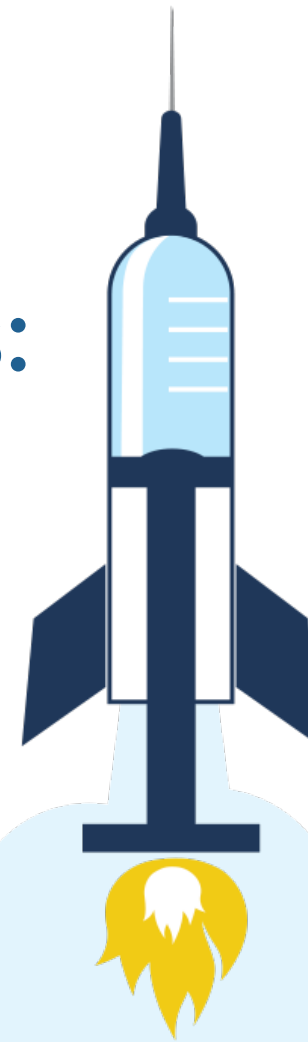
BOOST Education and Office Hours: COVID and Vaccination Status Update

Jeremy Bischoff, LHNA, BS

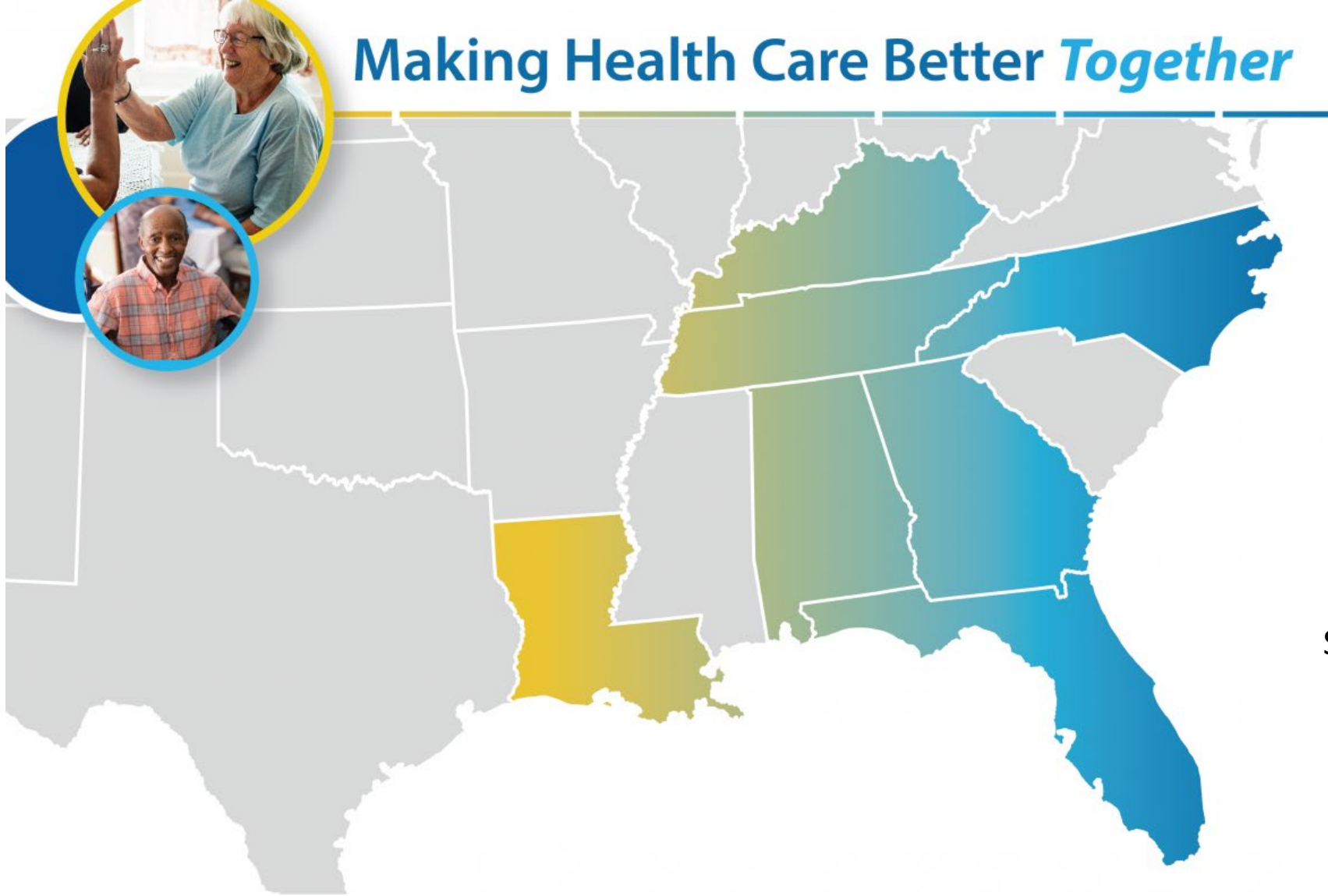
State Quality Manager-Kentucky, CMS
Vaccination Lead



QIN-QIO
Quality Innovation Network -
Quality Improvement Organizations
CENTERS FOR MEDICARE & MEDICAID SERVICES
QUALITY IMPROVEMENT & INNOVATION GROUP



Making Health Care Better *Together*



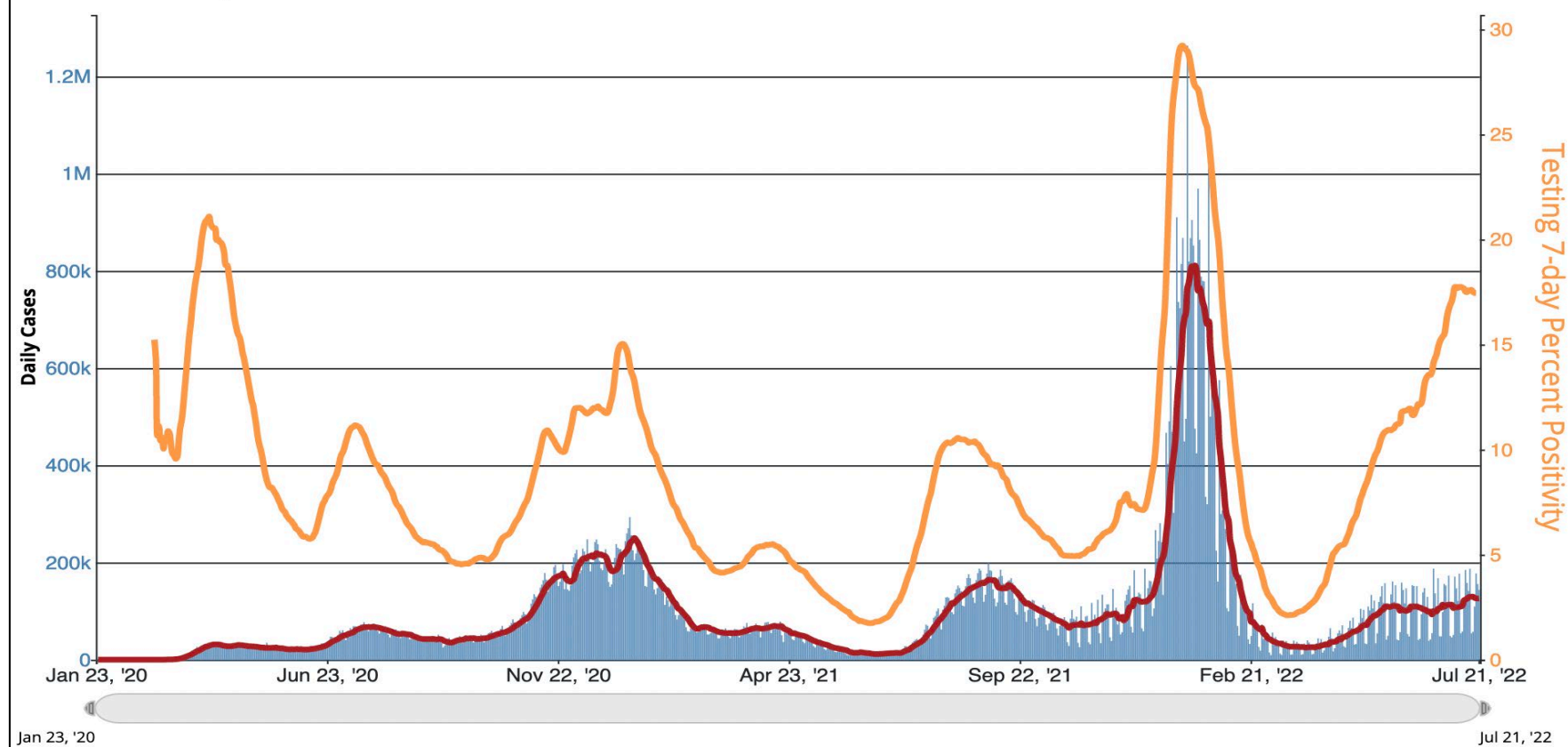
Jeremy Bischoff, LHNA, BS
State Quality Manager-Kentucky,
CMS Vaccination Lead

About Alliant Health Solutions

Current State: COVID-19

The blue bars show daily cases. The red line is the 7-day moving average of cases. The orange line shows the percent of NAAT tests reported in the last 7 days that were positive for COVID-19.

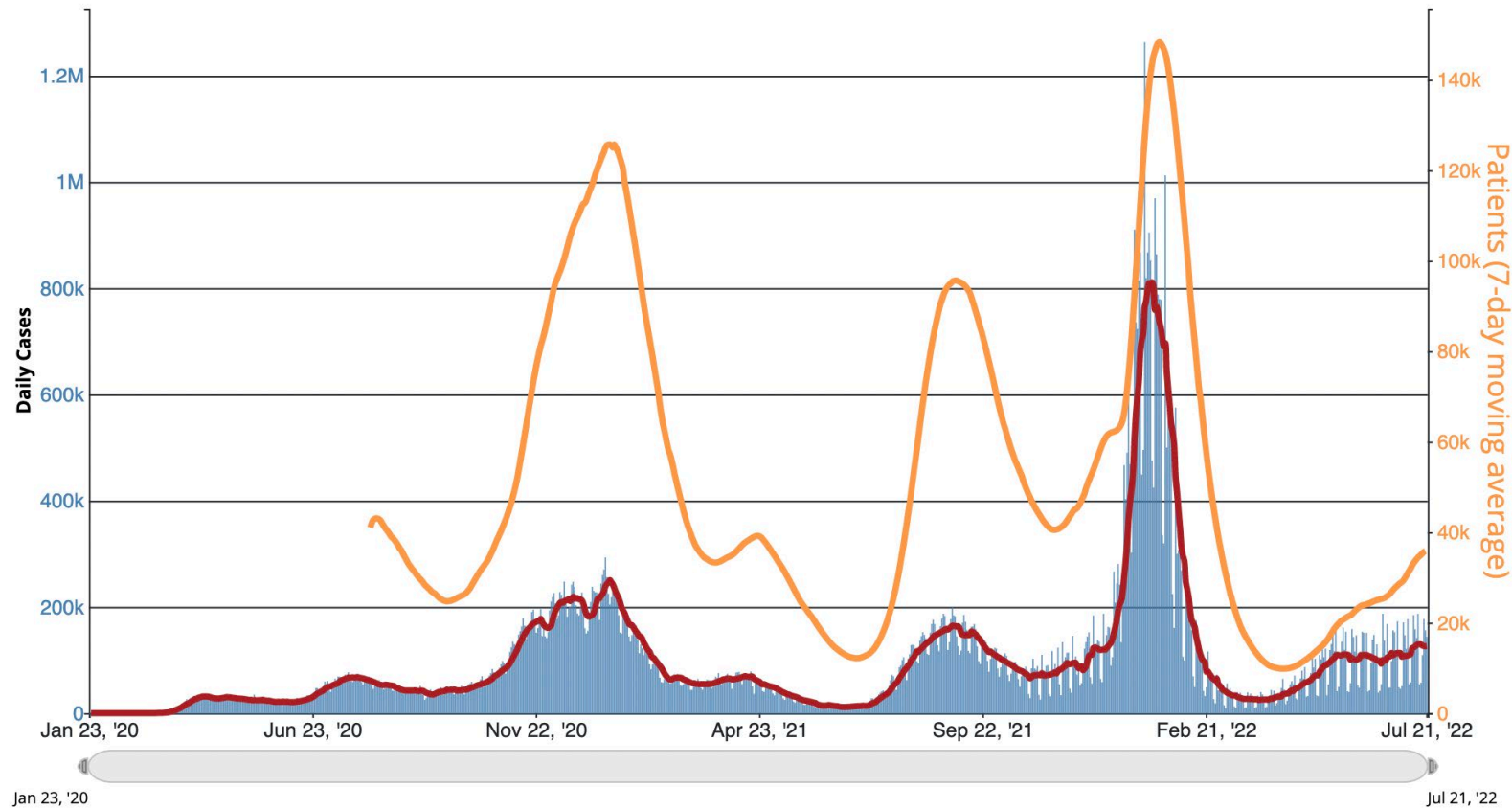
Daily Trends in Number of Cases and COVID-19 Nucleic Acid Amplification Tests (NAATs) 7-day Percent Positivity in The United States Reported to CDC



Current State: COVID-19

The blue bars show daily cases. The red line is the 7-day moving average of cases. The orange line represents the 7-day average of the number of prevalent patients hospitalized with confirmed COVID-19.

Daily Trends in Number of Cases and 7-day Average of Current Hospitalized Patients with Confirmed COVID-19 in The United States Reported to CDC



Resident Cases of COVID-19

Confirmed COVID-19 Cases among Residents and Rate per 1,000 Resident-Weeks in Nursing Homes, by Week—United States



Confirmed COVID-19 Cases among Residents and Rate per 1,000 Resident-Weeks in Nursing Homes, by Week—United States



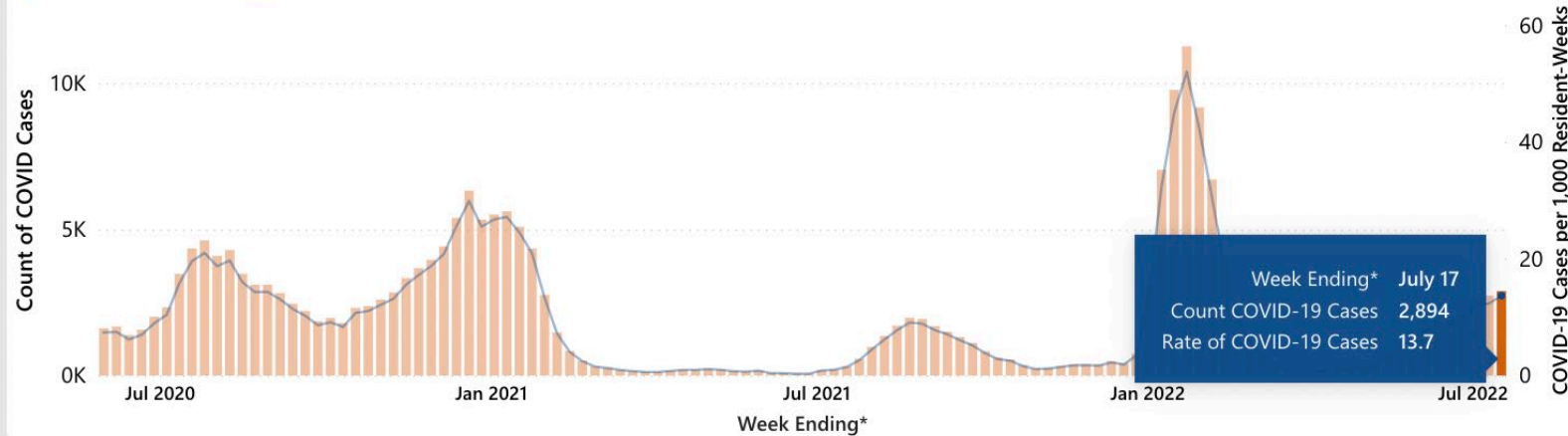
Display by State

All

Display by FEMA/HHS Region

Region 4

Count COVID-19 Cases — Rate of COVID-19 Cases



* Data are likely accruing, all data can be modified from week-to-week by facilities

For the purpose of creating this time-series graph, data that fail certain quality checks or appear inconsistent with surveillance protocols are assigned a value based on their patterns for data-entry or excluded from analysis

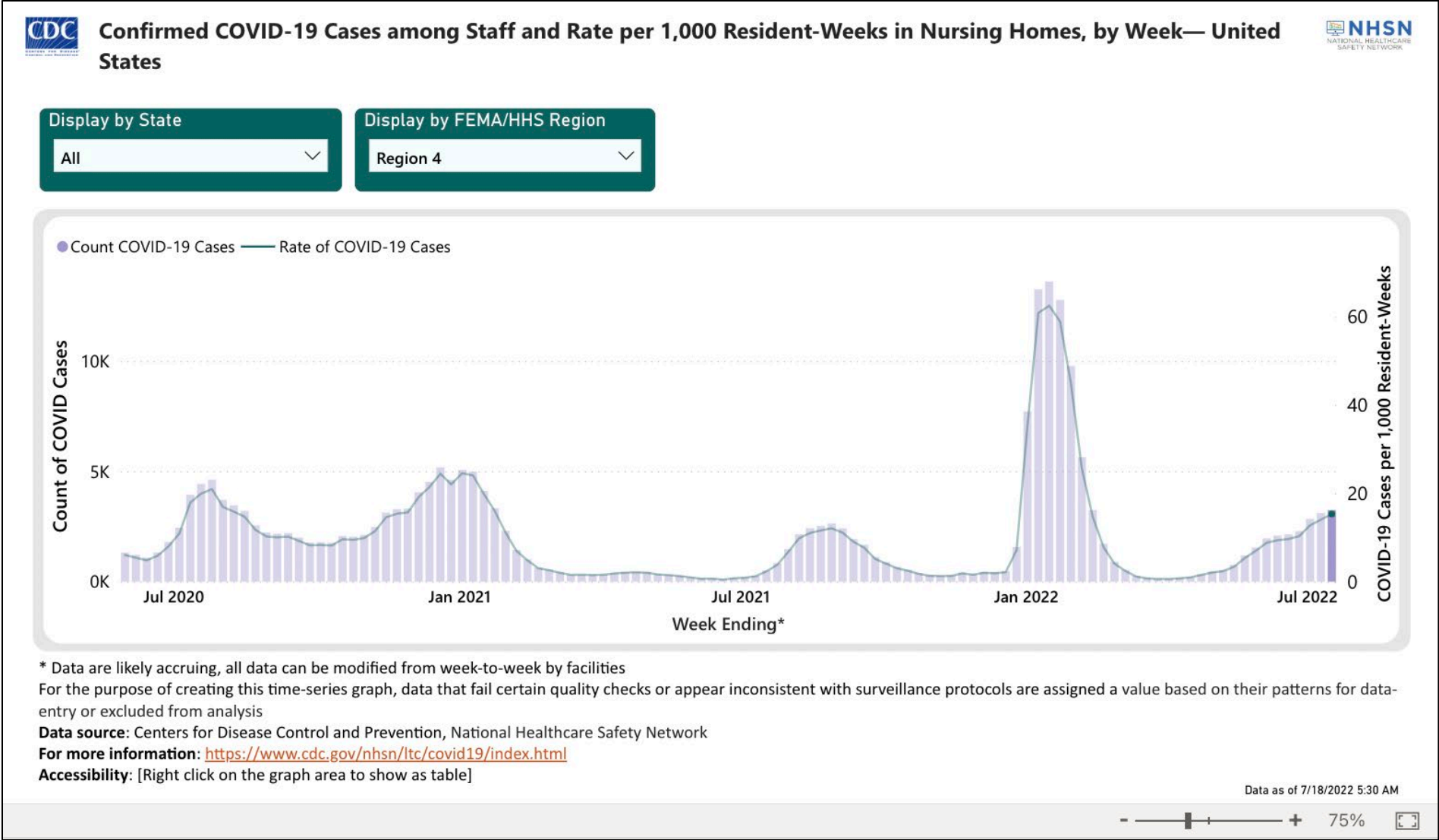
Data source: Centers for Disease Control and Prevention, National Healthcare Safety Network

For more information: <https://www.cdc.gov/nhsn/ltc/covid19/index.html>

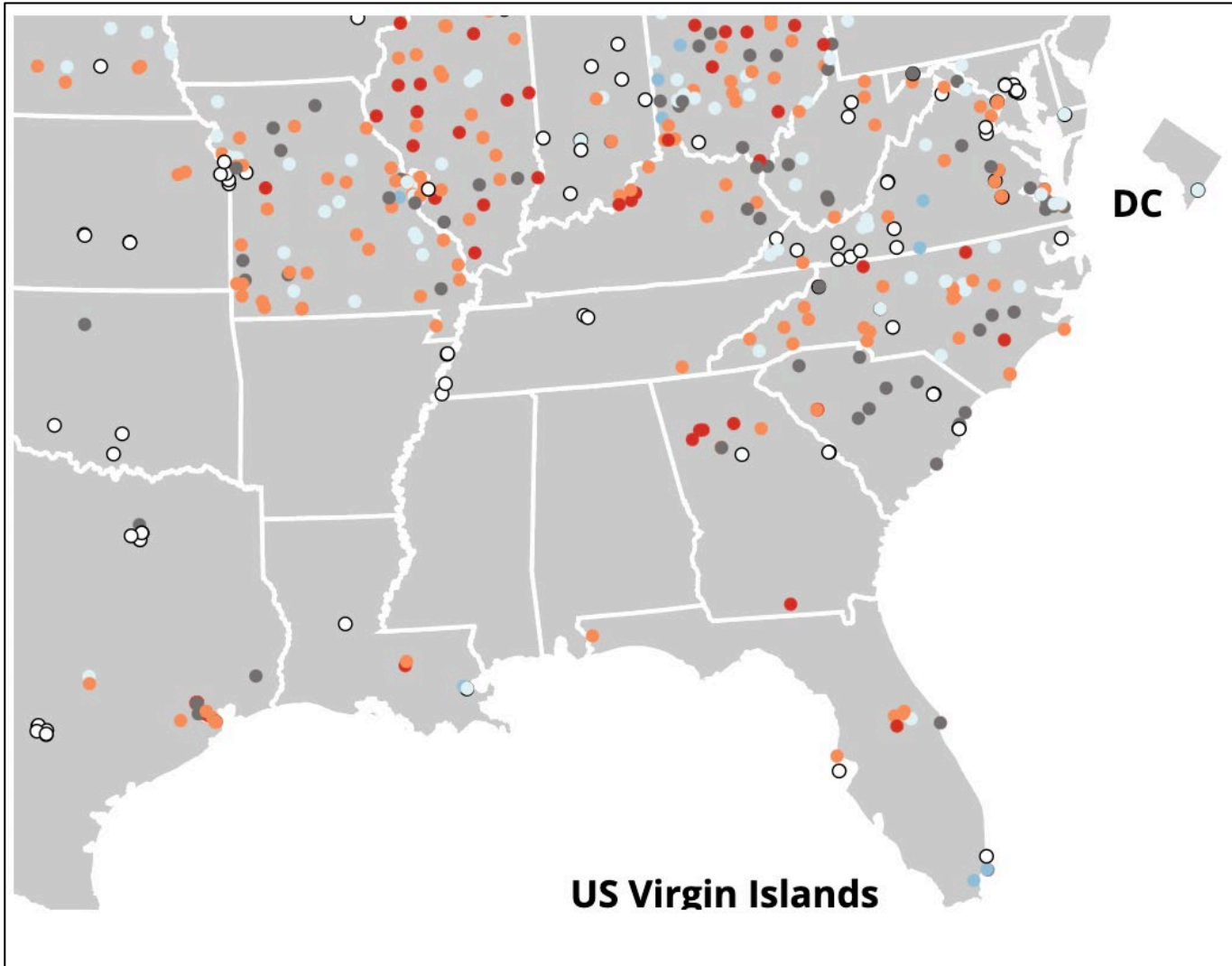
Accessibility: [Right click on the graph area to show as table]

Data as of 7/18/2022 5:30 AM

Staff Cases of COVID-19



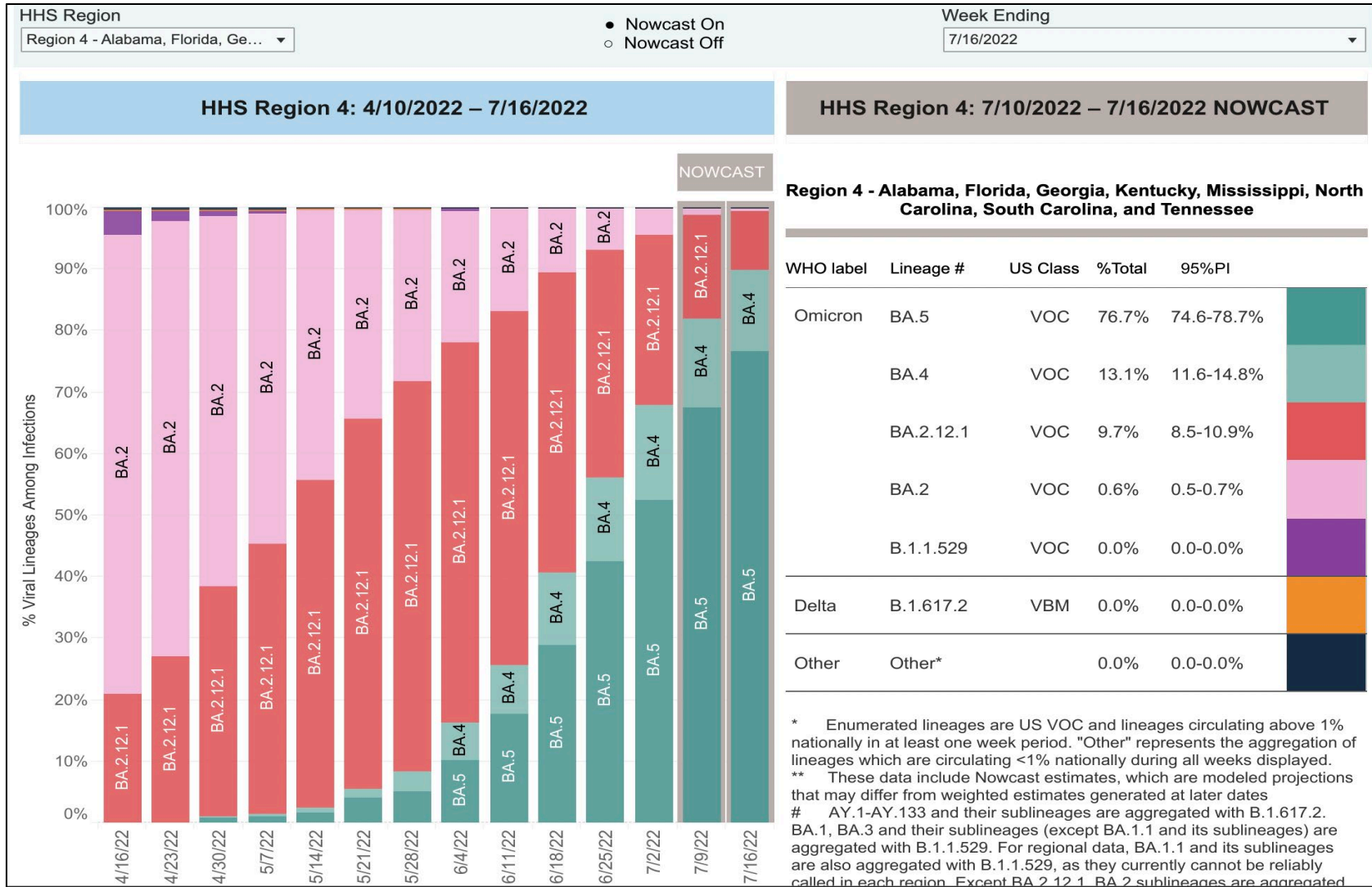
Wastewater Surveillance



Current SARS-CoV-2 virus levels by site, United States

Current virus levels category	Num. sites	% sites	Category change in last 7 days
New Site	193	20	1%
0% to 19%	7	1	- 13%
20% to 39%	54	6	- 22%
40% to 59%	229	24	- 2%
60% to 79%	330	35	- 3%
80% to 100%	139	15	6%

Current COVID-19 Variant



The Three Pillars

A diagram showing three horizontal bars of different colors (orange, teal, and light blue) stacked vertically. To the left of each bar is a white circle with a yellow outline. A yellow line connects the top of each circle to the top-left corner of the bar it represents. The top circle is connected to the orange bar, the middle circle to the teal bar, and the bottom circle to the light blue bar.

Up to Date Vaccinate (booster for all eligible)

PPE and Infection Control

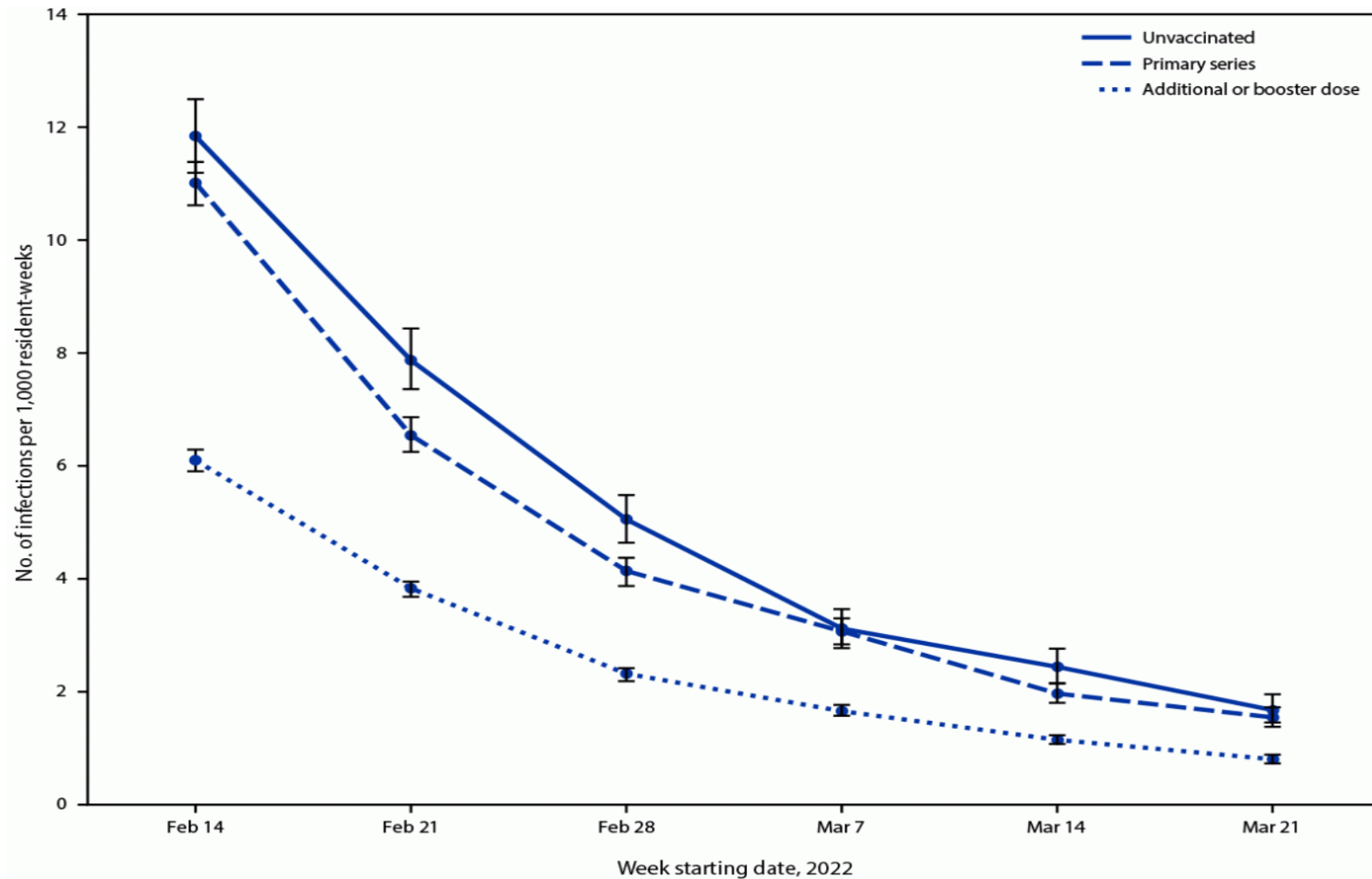
Testing

Vaccine Effectiveness

SARS-CoV-2 infection	3 doses mRNA	69%
Hospitalizations	3 doses mRNA	90%---> 84% for Omicron
ED visit	3 doses mRNA	83%
Mechanical ventilation or death	3 doses mRNA	94%

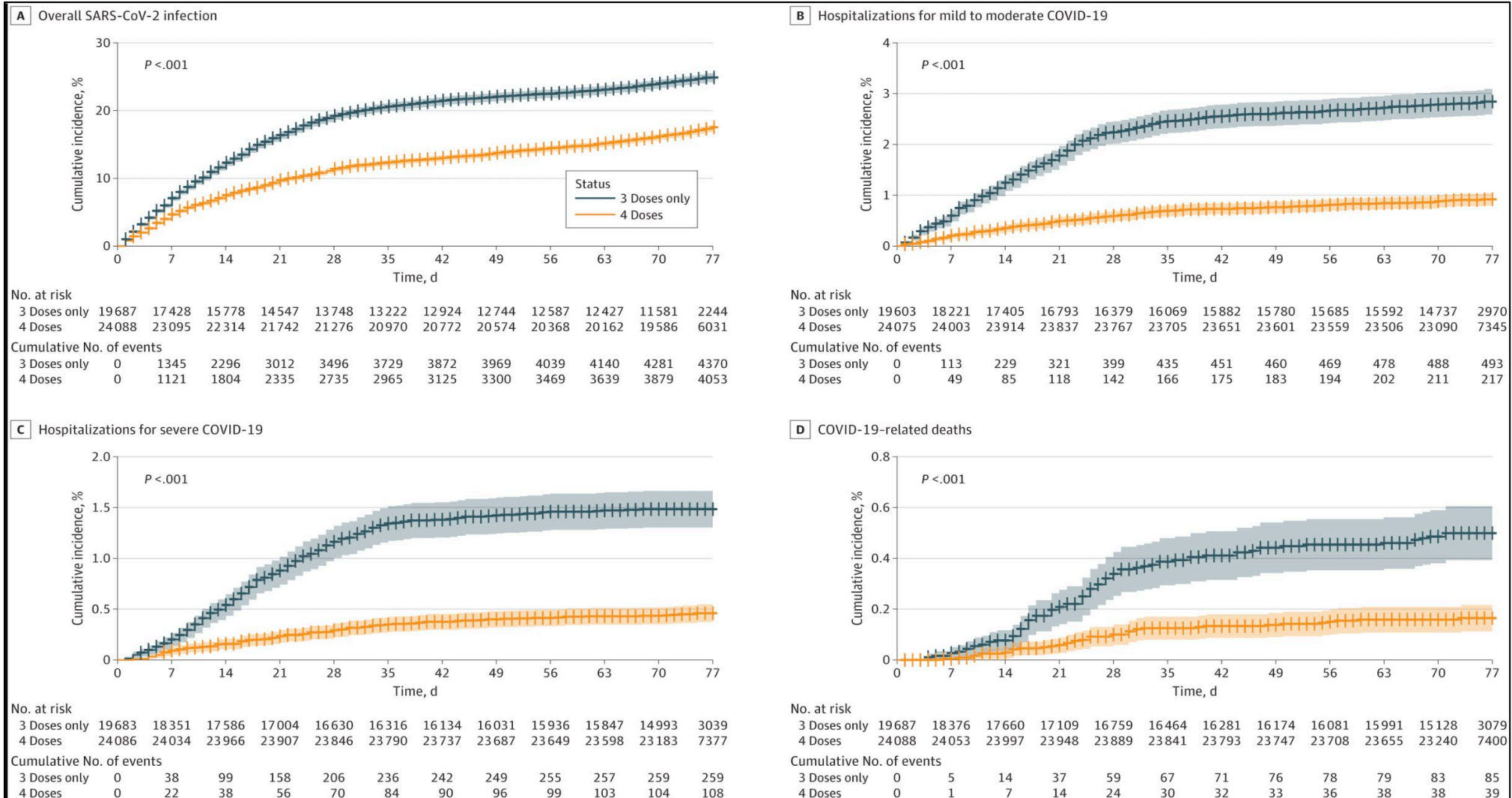
<https://covid.cdc.gov/covid-data-tracker/#vaccine-effectiveness>

Vaccine Effectiveness in LTC



Crude weekly rates of reported confirmed SARS-CoV-2 infection among skilled nursing facility residents, by vaccination status and resident-week — National Healthcare Safety Network, United States, February 14–March 27, 2022 ([Prasad N, Derado G, Nanduri SA, et al. MMWR 2022;71:633–637](#)).

Effect of 3rd vs 4th Dose Against Omicron

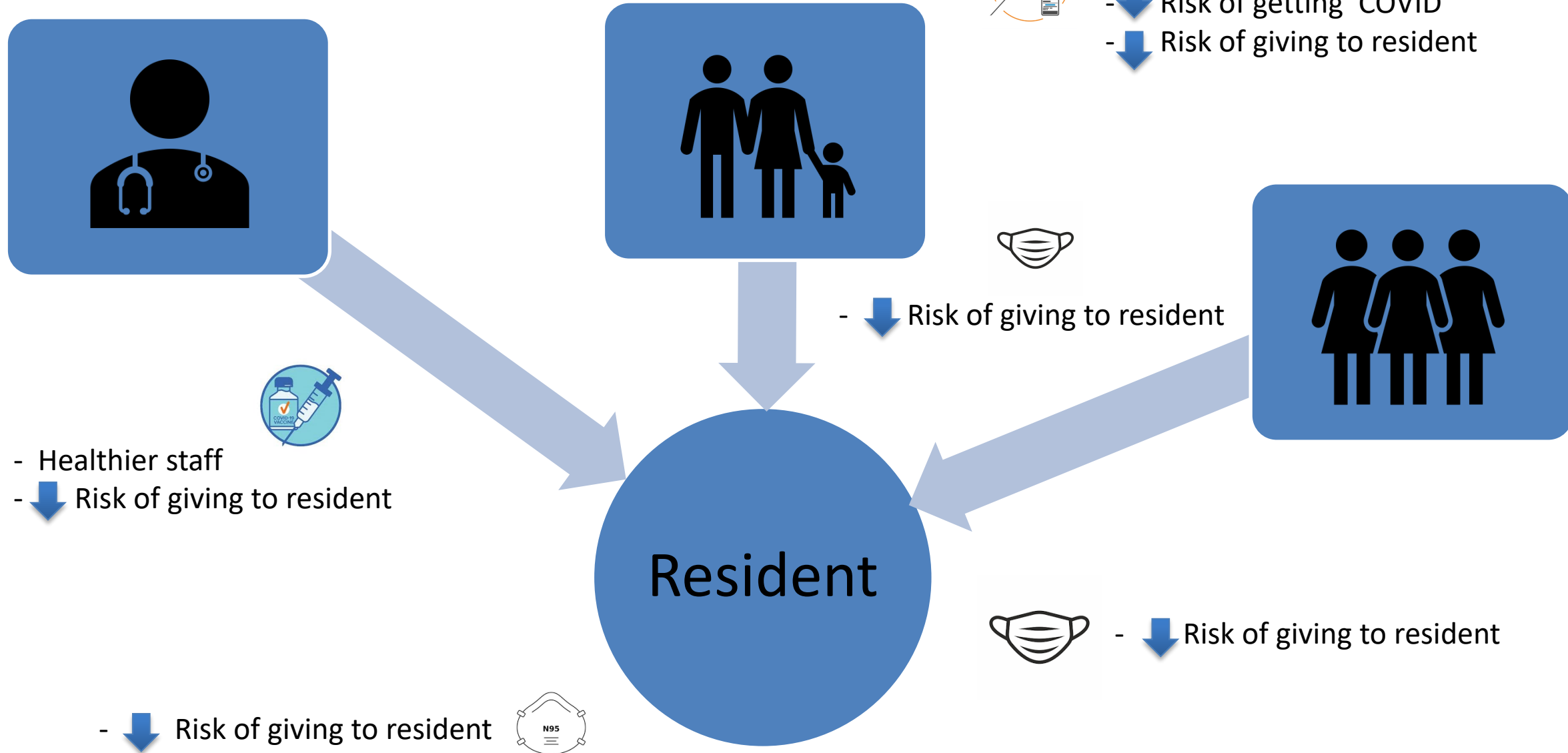


<https://jamanetwork.com/journals/jamainternalmedicine/fullarticle/2793699>

Checklist

- ☐ Up-to-date vaccine
 - Residents
 - STAFF
- ☐ PPE and infection control
 - Staff
 - Residents
 - Visitors
- ☐ Test early
 - Cohort

Preventing Spread



Therapeutic Considerations

PATIENT DISPOSITION

Does Not Require
Hospitalization or
Supplemental Oxygen

PANEL'S RECOMMENDATIONS

All patients should be offered symptomatic management **(AIII)**.

For patients who are at high risk of progressing to severe COVID-19,^a use 1 of the following treatment options:

Preferred Therapies

Listed in order of preference:

- Ritonavir-boosted nirmatrelvir (Paxlovid)^{b,c} **(AIIa)**
- Remdesivir^{c,d} **(BIIa)**

Alternative Therapies

For use ONLY when neither of the preferred therapies are available, feasible to use, or clinically appropriate. Listed in alphabetical order:

- Bebtelovimab^e **(CIII)**
- Molnupiravir^{c,f} **(CIIa)**

The Panel **recommends against** the use of **dexamethasone^g** or **other systemic corticosteroids** in the absence of another indication **(AIII)**.

Prevention

Cure



What's New in COVID-19 Vaccination News?

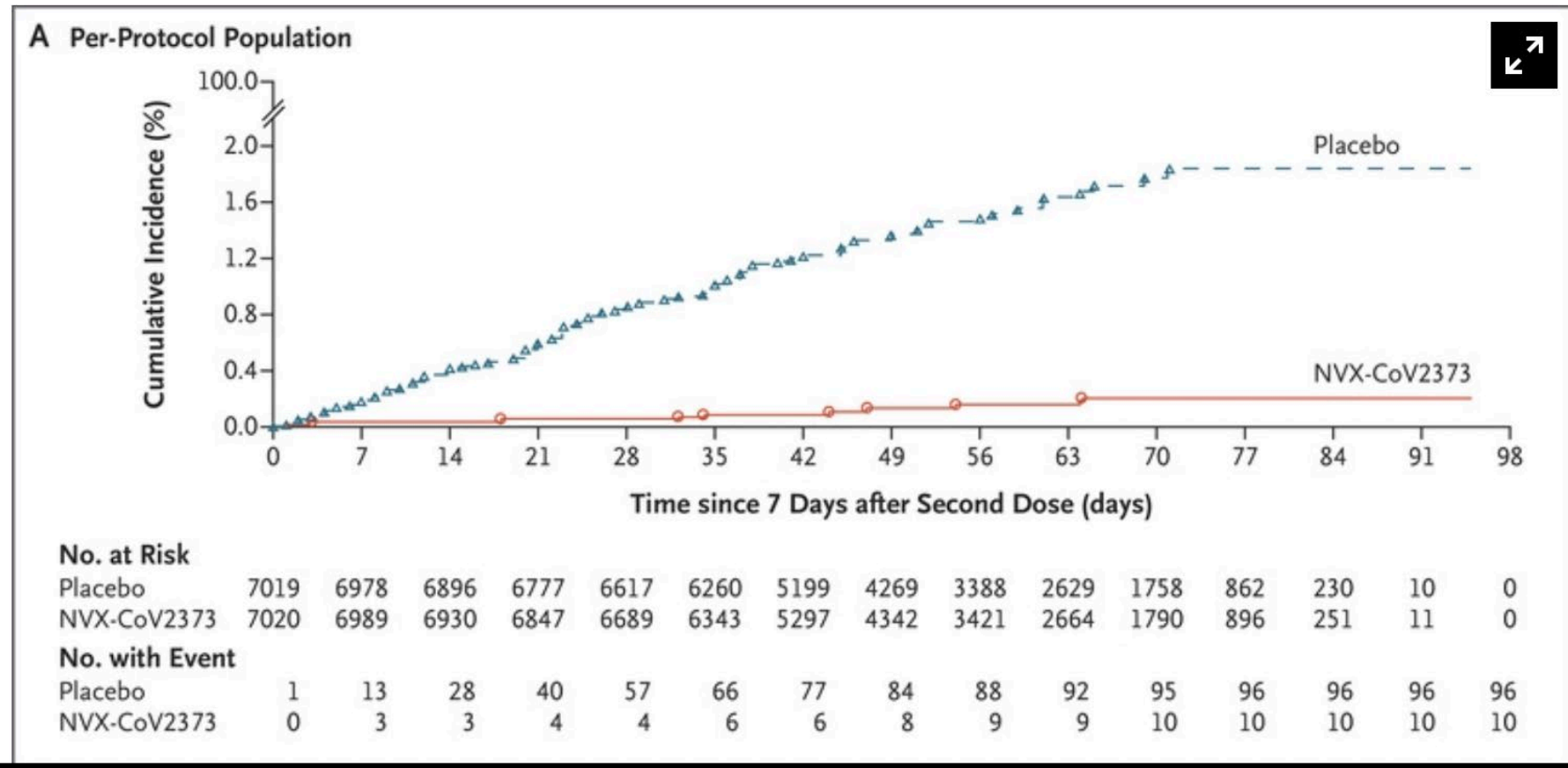
Novavax: EUA July 13, 2022

Number of Shots: Two doses in the primary series, given three-eight weeks apart. People who are moderately or severely immunocompromised should also receive two doses, given three weeks apart (a third primary dose is not currently authorized).

Booster Shot: Novavax COVID-19 vaccine is **not** authorized for use as a booster dose.

Novavax: Efficacy

Figure 3. Kaplan–Meier Plots of Efficacy of the NVX-CoV2373 Vaccine against Symptomatic Covid-19.



<https://www.nejm.org/doi/full/10.1056/NEJMoa2107659>

Novavax: Contraindications

Do not administer the Novavax COVID-19 vaccine, Adjuvanted to individuals with a known history of a severe allergic reaction (e.g., anaphylaxis) to any component of the Novavax COVID-19 vaccine, Adjuvanted (see full EUA prescribing information).

<https://www.fda.gov/media/159897/download>

Novavax: Side Effects

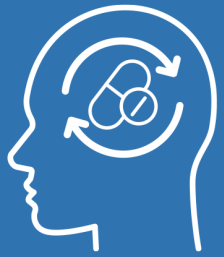
- Site pain/tenderness (82.2%),
- Fatigue/malaise (62.0%),
- Muscle pain (54.1%),
- Headache (52.9%),
- Joint pain (25.4%),
- Nausea/vomiting (15.6%),
- Injection site redness (7.0%),
- Injection site swelling (6.3%),
- Fever (6.0%).
- Myocarditis, pericarditis, chills, injection site pruritus, hypersensitivity reactions, and lymphadenopathy-related reactions have been reported (RARE) following administration of the Novavax COVID-19 Vaccine, Adjuvanted.

<https://www.fda.gov/media/159897/download>

Questions?



Nursing Home and Partnership for Community Health: CMS 12th SOW GOALS



OPIOID UTILIZATION AND MISUSE

- Promote opioid best practices
-
- Reduce opioid adverse drug events in all settings



PATIENT SAFETY

- Reduce hospitalizations due to c. diff
-
- Reduce adverse drug events
-
- Reduce facility acquired infections



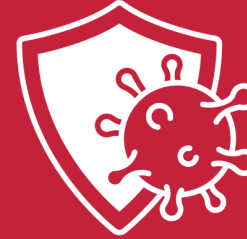
CHRONIC DISEASE SELF- MANAGEMENT

- Increase instances of adequately diagnosed and controlled hypertension
-
- Increase use of cardiac rehabilitation programs
-
- Reduce instances of uncontrolled diabetes
-
- Identify patients at high-risk for kidney disease and improve outcomes



CARE COORDINATION

- Convene community coalitions
-
- Reduce avoidable readmissions, admissions to hospitals and preventable emergency department visits
-
- Identify and promote optimal care for super utilizers



COVID-19

- Support nursing homes by establishing a safe visitor policy and cohort plan
-
- Provide virtual events to support infection control and prevention
-
- Support nursing homes and community coalitions with emergency preparedness plans



IMMUNIZATION

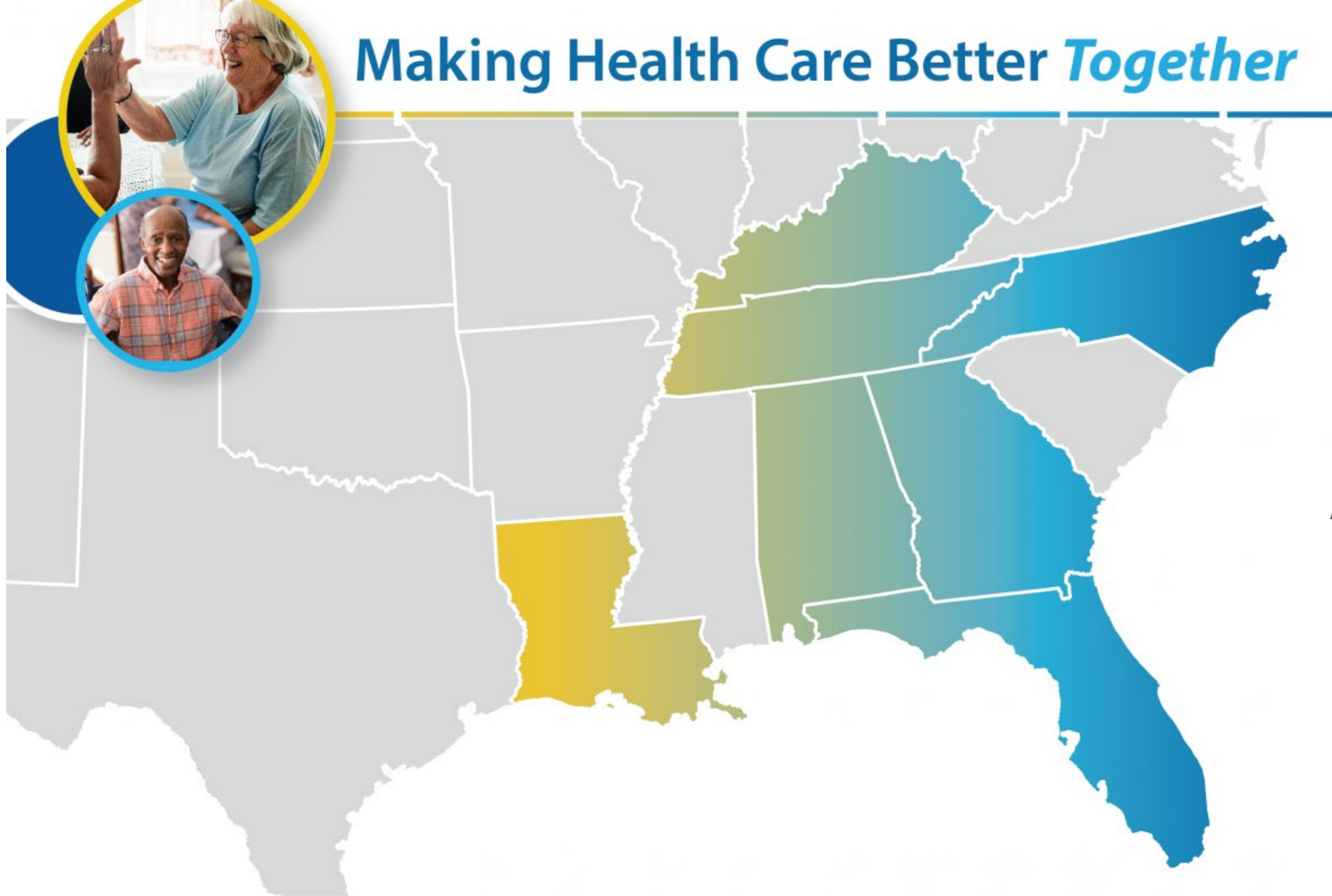
- Increase influenza, pneumococcal, and COVID-19 vaccination rates



TRAINING

- Encourage completion of infection control and prevention trainings by front line clinical and management staff

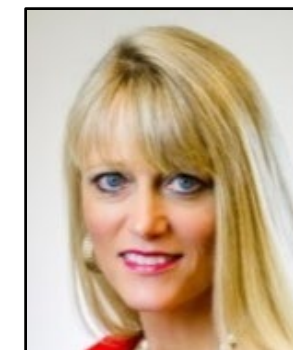
Making Health Care Better *Together*



Julie Kueker

Julie.Kueker@AlliantHealth.org

Alabama, Florida and Louisiana



Leighann Sauls

Leighann.Sauls@AlliantHealth.org

Georgia, Kentucky, North Carolina and Tennessee

Program Directors



@AlliantQIO



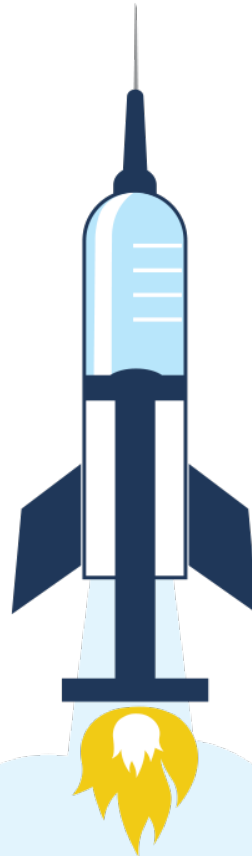
@AlliantQIO



Alliant Health Solutions



AlliantQIO



Thank you

This material was prepared by Alliant Health Solutions, a Quality Innovation Network – Quality Improvement Organization (QIN – QIO) and Hospital Quality Improvement Contractor (HQIC) under contract with the Centers for Medicare & Medicaid Services (CMS), an agency of the U.S. Department of Health and Human Services (HHS). Views expressed in this material do not necessarily reflect the official views or policy of CMS or HHS, and any reference to a specific product or entity herein does not constitute endorsement of that product or entity by CMS or HHS. Publication No. 12SOW-AHSQIN-QIO TO1-CH TO1-NH--2364-07/27/22