

Look How Far We Have Come

COVID-19 Vaccine Update and More



 **ALLIANT**
HEALTH SOLUTIONS

QIN-QIO
Quality Innovation Network -
Quality Improvement Organizations
CENTERS FOR MEDICARE & MEDICAID SERVICES
EQUALITY IMPROVEMENT & INNOVATION GROUP

Making Health Care Better *Together*



Jeremy Bischoff, LNHA, BS
Quality Advisor
Jeremy.Bischoff@AlliantHealth.org

About Alliant Health Solutions



Timeline

Where does the time go?

- March 11, 2020
 - World Health Organization declared COVID-19 a global pandemic
 - Shortly after, former President Donald Trump had declared a national emergency, with states beginning to issue stay-at-home orders, mask mandates, and capacity limits at businesses like restaurants and bars
- December 2020
 - Pfizer and Moderna COVID-19 available under EUA
 - First deliveries of COVID-19 vaccine
- February 2021
 - Janssen COVID-19 available under EUA
- March 2021
 - HHS Secretary issues directive to expand COVID-19 vaccine to all Americans

Where does the time go?

- April 2021
 - All over 16 years old eligible for vaccine
- September 2021
 - HHS Secretary issued directive to all booster to certain populations
- October 2021
 - FDA amended the EUA to allow single booster dose and use mix and match booster dose
 - Expanded booster dose criteria
- March 2022
 - FDA approves second booster for 50 and older and immunocompromised individuals
- May 2022
 - Expanded booster age eligibility

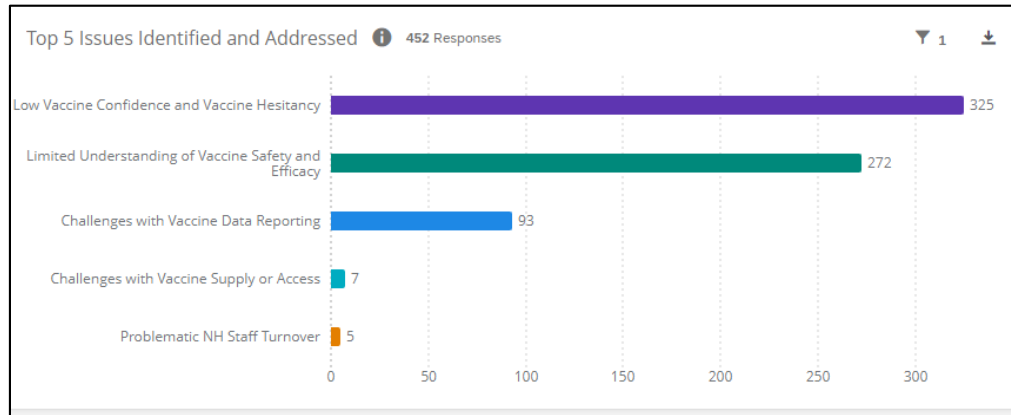


How Are We Doing?

How are we doing?



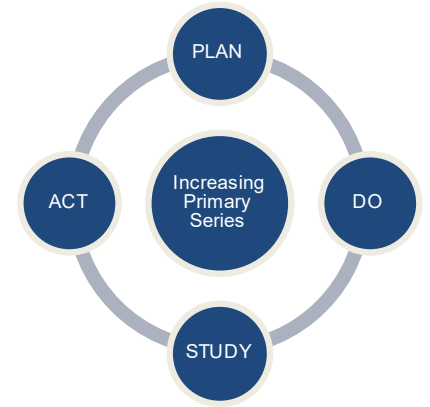
- Focus on Primary Vaccine
 - CMS directed QIO to focus on Primary Vaccine in LTC
 - Criteria <25% residents and/or HCP completed primary series
 - 203 facilities referred
 - QIO assisted facilities with Root Cause Analysis – Top Reported Issues



- Provided 1:1 technical assistance related to identified root causes

So how are we doing?

- Focus on Primary Vaccine – Outcome
 - Marked improvement in uptake of primary series
 - Average Percent HCP Vaccinated: 84.32%
 - Average Percent Residents Vaccinated: 82.25%



New Focus - BOOSTER

- CMS Focus on Booster Vaccines – December 2021
 - CMS directed QIO to focus on Booster
 - Criteria <25% residents receiving booster
 - 76 facilities referred – expanded in January (criteria <40% residents receiving booster)
 - Currently 1,013 facilities referred

Booster Focus

- Alliant kicked off the “Give the BOOST a Shot” Program
- 1:1 technical assistance
 - Identify root cause(s)
 - Develop action plan
 - Monthly check point calls
 - Update plan as needed
- Weekly education and office hours – featuring Alliant Medical Director Thursday from 2-2:45 pm ET
- Site Visits offered for additional support
- Corporate education
- NHSN support
- Weekly Booster Bulletin – focusing on Best Practice Facilities
- Resources developed based on facility needs

Booster Focus – Resources

- Resources
 - Booster Guide- available in English and Spanish
 - Using Motivational Interviewing
 - Answers to Tough Questions
 - Visitor talking Points Flyer
 - Attention Visitors Poster
 - Social Media Graphics
 - Updated monthly



ATTENTION VISITORS We are Happy to Welcome Visitors Back to our Facility!

HELP US PROTECT OUR RESIDENTS WHILE YOU ARE VISITING

CORE PRINCIPLES TO FOLLOW WHILE IN THE FACILITY



GET A COVID-19 VACCINE
 • The most effective tool to protect against the COVID-19 Omicron variant (or any version of COVID-19) is to become fully vaccinated AND receive booster shots per CDC recommendations.
 • For more information on booster eligibility see the [CDC COVID-19 Vaccines Booster Guide](#).



WEAR A MASK (per CMS)
 • Visitors, regardless of vaccination status, must wear masks and physically distance themselves from other residents and staff when in a communal area in the facility.
 • Separately, while we strongly recommend that visitors wear masks when visiting residents in a private setting, such as a residents' room when the roommate isn't present, they may choose not to.



STAY 6 FEET FROM OTHERS
 • A party in an indoor visit would be conducted when the roommate is not present, however if that is not an option and as long as physical distancing can be maintained, there is still may be conducted in the resident's room with their roommate present.
 • If physical distancing cannot be maintained, the visit should occur in a different area of the facility, or the visit should occur as a drive-up visit.
 • Visitors are not to be in the room, or the visitor should be asked to limit the number of visitors that are in the room at one time.
 • Visitors may eat with a resident if the resident (and/or responsible party) is aware of the risk and regardless of vaccination status, must wear a mask (when not eating and drinking) and physically distance from other residents and staff when in a communal area of the facility.

continued on the other side

ATTENTION VISITORS We are Happy to Welcome Visitors Back to our Facility!

HELP US PROTECT RESIDENTS, STAFF AND YOURSELF

CMS and CDC continue to recommend facilities, residents, families and other visitors adhere to the core principles of COVID-19 infection. This continues to be the safest way to prevent the spread of COVID-19, particularly if your party has not been fully vaccinated.

See CMS 22.2032 Nursing Home Visitation (FAQs)



Wear a mask.



Both you and your loved ones should stay up to date on Vaccines.



Wash your hands often.



Do not visit if you feel sick.



Cover coughs and sneezes.



Stay six feet apart.

Additional information on the facility level
 • All visitors, regardless of vaccination status, must wear masks and physically distance themselves from other residents and staff when in a communal area in the facility.
 • Separately, while we strongly recommend that visitors wear masks when visiting residents in a private setting, such as a residents' room when the roommate isn't present, they may choose not to.
 • A party in an indoor visit would be conducted when the roommate is not present, however if that is not an option and as long as physical distancing can be maintained, there is still may be conducted in the resident's room with their roommate present.
 • If physical distancing cannot be maintained, the visit should occur in a different area of the facility, or the visit should occur as a drive-up visit.
 • Visitors are not to be in the room, or the visitor should be asked to limit the number of visitors that are in the room at one time.
 • Visitors may eat with a resident if the resident (and/or responsible party) is aware of the risk and regardless of vaccination status, must wear a mask (when not eating and drinking) and physically distance from other residents and staff when in a communal area of the facility.

ALLIANT HEALTH SOLUTIONS



Booster Focus –Resources

- Take 5 Series
 - Educational Shorts focusing on requested topics.
 - * Currently available online
 - Introduction: How to Use Take 5
 - Vaccine Eligibility Part 1
 - Vaccine Eligibility Part 2
 - Overcoming Refusals
 - Additional Precautions for Unvaccinated Health Care Personnel
 - MANY MORE TO COME
 - Reach out to us at Booster@allianthealth.org to share, request assistance, ETC.....



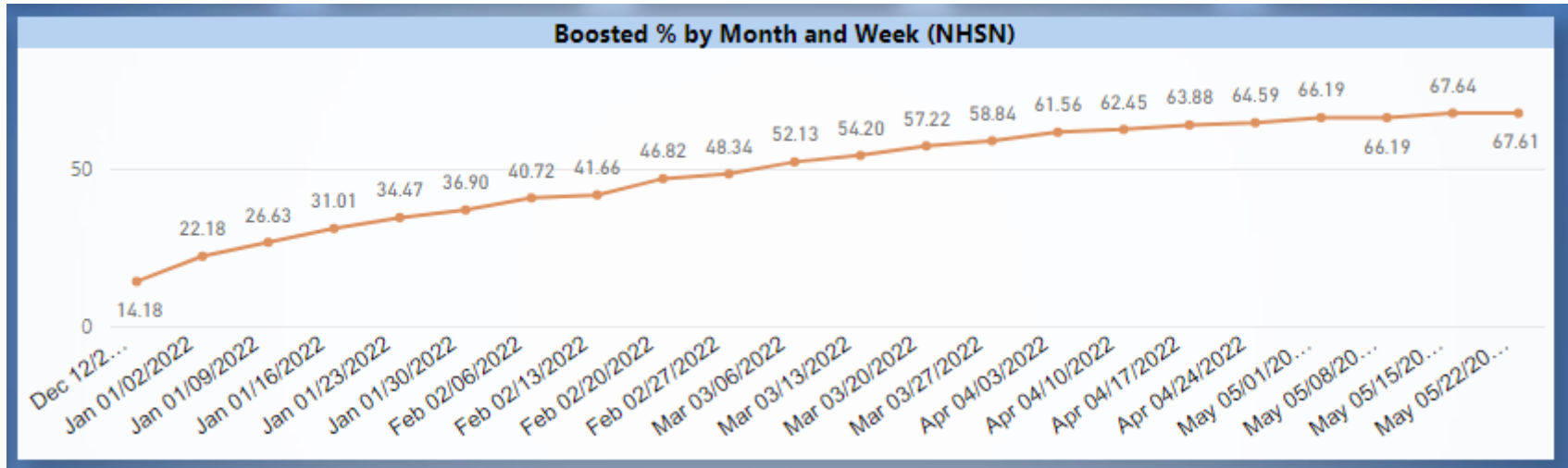
<https://quality.allianthealth.org/topic/give-the-boost-a-shot/>



BOOSTER Outcomes

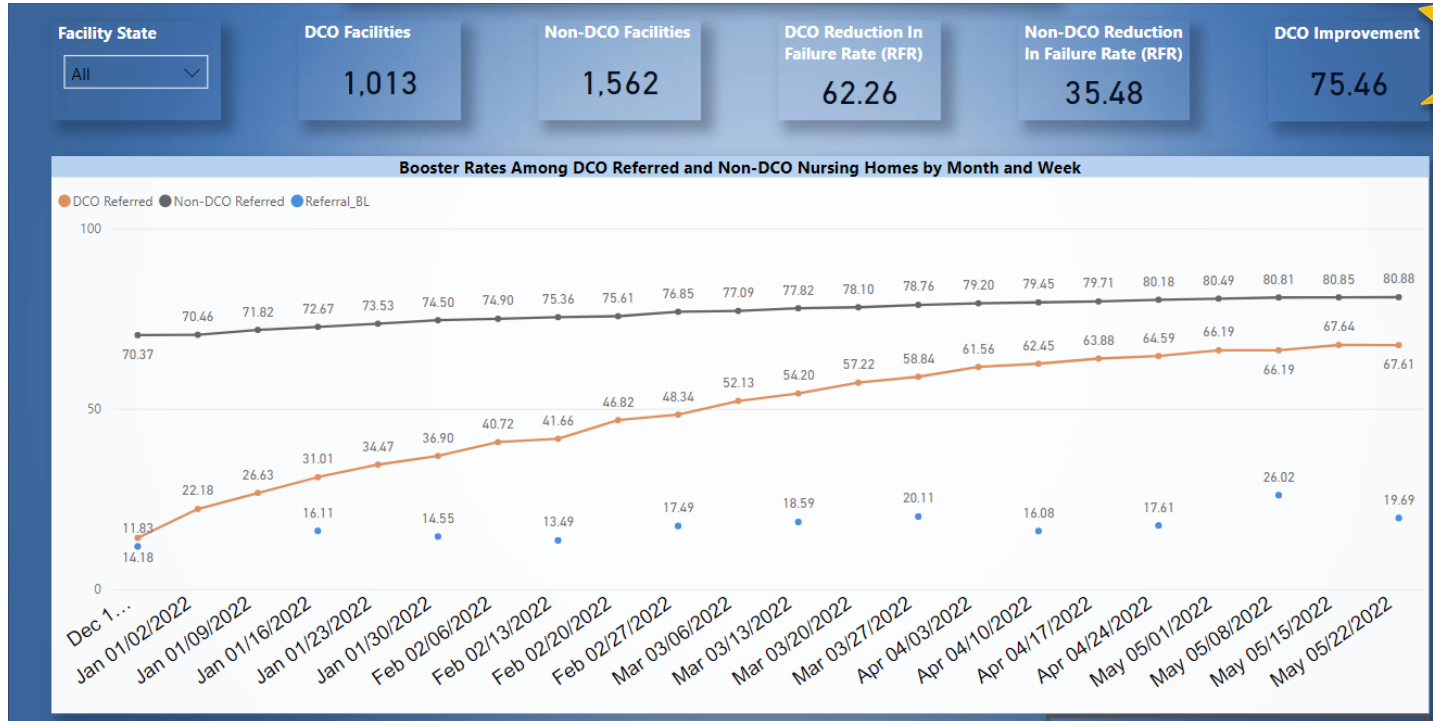
Booster Focus –Outcomes

- Over 300 referred facilities now have Booster Rates >80%
- Baseline in December 14.18% to 67.61% in May
- 53.43% Absolute Improvement



Booster Focus –Outcomes

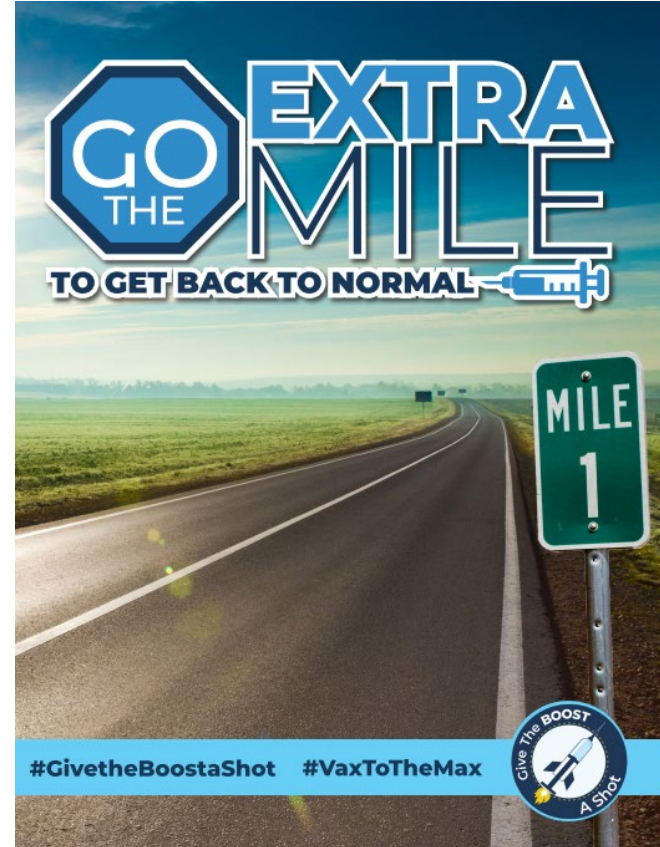
Comparing focus facilities to non-focus facilities



Booster Focus – Now What?

- STAY FOCUSED!
 - Track resident and staff rates
 - Review NSHN data weekly
 - Continue to address vaccine uptake at the staff and resident level – Make it part of your daily updates
 - Continue to provide up-to-date resources
- **Reach out to your QIN-QIO**
Alliant Health Solutions
for assistance!! We are here to help you!

THANK YOU for all you do and
going the **EXTRA MILE!**



Questions?



CMS 12th SOW Goals



Behavioral Health Outcomes & Opioid Misuse

- ✓ Promote opioid best practices
- ✓ Decrease high dose opioid prescribing and opioid adverse events in all settings
- ✓ Increase access to behavioral health services



Patient Safety

- ✓ Reduce risky medication combinations
- ✓ Reduce adverse drug events
- ✓ Reduce C. diff in all settings



Chronic Disease Self-Management

- ✓ Increase performance on ABCS clinical quality measures (i.e., aspirin use, blood pressure control, cholesterol management, cardiac rehab)
- ✓ Identify patients at high-risk for developing kidney disease & improve outcomes
- ✓ Identify patients at high risk for diabetes-related complications & improve outcomes



Quality of Care Transitions

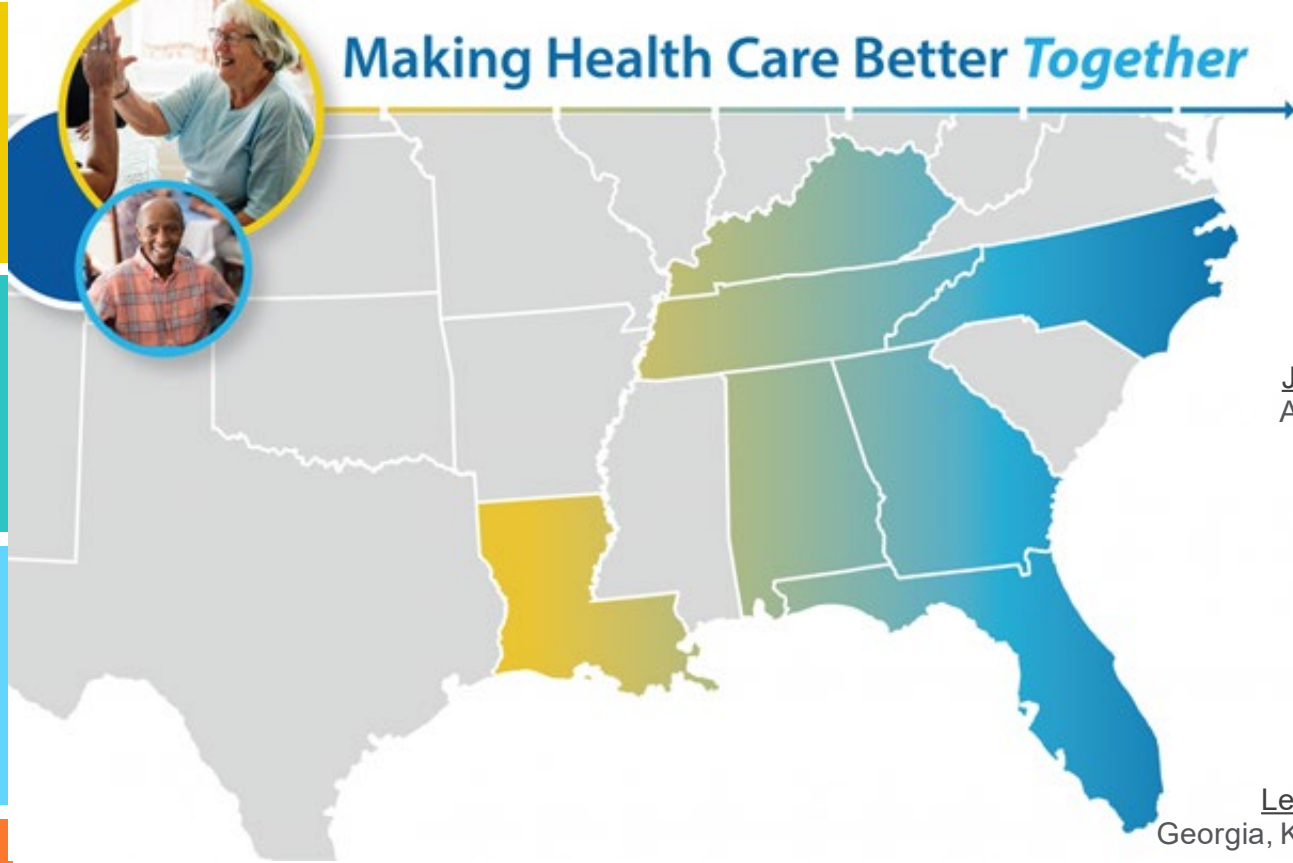
- ✓ Convene community coalitions
- ✓ Identify and promote optical care for super utilizers
- ✓ Reduce community-based adverse drug events



Nursing Home Quality

- ✓ Improve the mean total quality score
- ✓ Develop national baselines for healthcare related infections in nursing homes
- ✓ Reduce emergency department visits and readmissions of short stay residents

Making Health Care Better *Together*

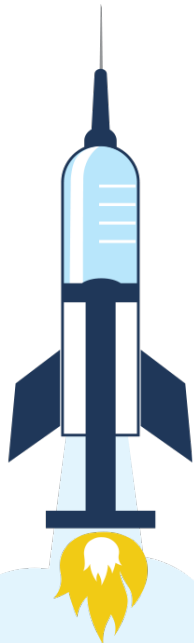


Julie Kueker
Julie.Kueker@AlliantHealth.org
Alabama, Florida and Louisiana



Leighann Sauls
Leighann.Sauls@AlliantHealth.org
Georgia, Kentucky, North Carolina and Tennessee

Program Directors



Thank you



@AliantQIO



@AliantQIO



Aliant Health Solutions



AliantQIO

This material was prepared by Aliant Health Solutions, a Quality Innovation Network–Quality Improvement Organization (QIN–QIO) and Hospital Quality Improvement Contractor (HQIC) under contract with the Centers for Medicare & Medicaid Services (CMS), an agency of the U.S. Department of Health and Human Services (HHS). Views expressed in this material do not necessarily reflect the official views or policy of CMS or HHS, and any reference to a specific product or entity herein does not constitute endorsement of that product or entity by CMS or HHS.

Publication No. 12SOW AHSQIN-QIO TO1 - NH–2150-06/08/22