

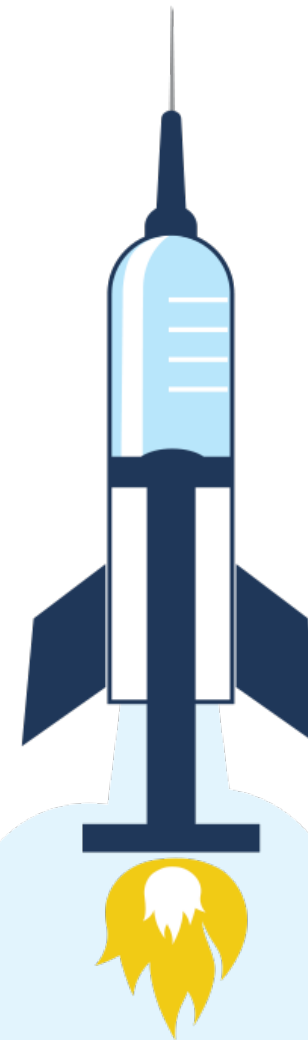
# BOOST Office Hours: Shop Talk - NHSN Updates & Technical Assistance

March 17, 2022

Presented by:

Marilee Johnson, MBA, MT (ASCP) &

Amy Ward MS, BSN, RN, CIC



# Amy Ward, MS, BSN, RN, CIC

## INFECTION PREVENTION SPECIALIST

Amy is a registered nurse with a diverse background in acute care nursing, microbiology, epidemiology and infection control. She is passionate about leading and mentoring new and future infection preventionists in their career paths and assisting them in reducing health care-associated infections across the continuum of care.

Amy enjoys spending time with family. She loves all the time she can get outdoors camping, bicycling and running.

Contact: [Amy.Ward@AlliantHealth.org](mailto:Amy.Ward@AlliantHealth.org)



# Marilee Johnson, MBA, MT (ASCP)

## INFECTION PREVENTION TECHNICAL ADVISOR

Marilee is a health professional with experience in public health epidemiology, infection prevention and clinical microbiology. Recently, she worked with the CDC's National Healthcare Safety Network to reduce *C. difficile* infections in nursing home residents. She supports nursing homes with tracking and reporting infections in NHSN and focuses on strategies to reduce health-acquired infections across all patient care settings.

Marilee loves gardening, hiking, reading, yoga and spending time with her family and friends.

Contact: [marilee.johnson@allianthealth.org](mailto:marilee.johnson@allianthealth.org)



# Objectives

## Learn Today:

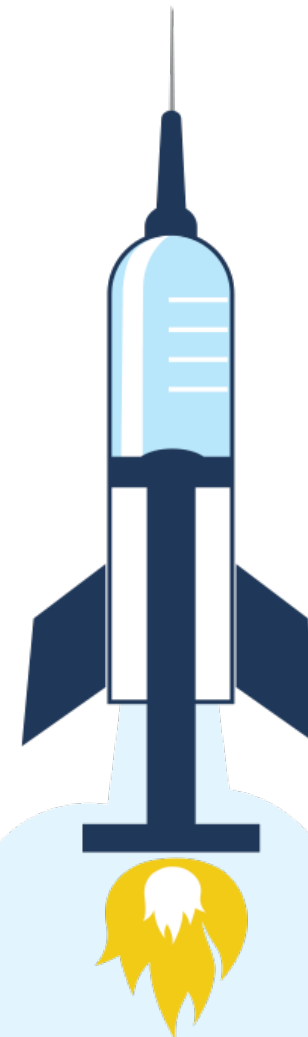
- Review NHSN access
- Discuss NHSN reporting requirements
- Review Data Entry to NHSN
- Run Reports to ensure data is accurate and of high quality

## Use Tomorrow:

- Create an NHSN notebook ([Nov. Shop Talk](#))
- Generate a data validation report in NHSN ([Dec. Shop Talk](#))
- [January Shop Talk](#)
  - [Download new tracking sheets](#)
  - [Deactivate former staff who no longer should have access](#)
  - How to check your NHSN data for timeliness and accuracy
  - [Don't report ZERO for Vaccination numerator](#) (#2)



# NHSN Updates



**QIN-QIO**  
Quality Innovation Network -  
Quality Improvement Organizations  
CENTERS FOR MEDICARE & MEDICAID SERVICES  
QUALITY IMPROVEMENT & INNOVATION GROUP

# NHSN Updates

A new COVID-19 therapeutic approved by the Food and Drug Administration (FDA) was added to the COVID-19 Module Therapeutics Pathway on February 25, 2022.

- [NHSN COVID-19 Module](#)
- [SVH Event Reporting Tool](#)

**Add COVID-19 Data**

Date for which counts are reported: 03/01/2022      Facility CCN:      Facility Type: LTC-SKILLNURS

Resident Impact and Facility Capacity

Staff and Personnel Impact

Supplies and Personal Protective Equipment

**Therapeutics**

Date Created:

Report total counts for the below questions only one calendar day during the reporting week and include only new counts since the previously reported counts. If the count is zero, a "0" must be entered as the response. A blank response is equivalent to missing data.

For each therapeutic listed, enter number of residents who received the therapeutic at this facility or elsewhere during the reporting week:

Therapeutic	How many residents were treated from stock stored at this facility?	How many residents were treated from stock that was stored at another facility, such as an infusion center?
<b>Monoclonal Antibody Therapy</b>		
Casirivimab/imdevimab (Regeneron)	<input type="text"/>	<input type="text"/>
Bamlanivimab/etesevimab (Lilly)	<input type="text"/>	<input type="text"/>
Sotrovimab (GlaxoSmithKline)	<input type="text"/>	<input type="text"/>
Evusheld (AstraZeneca)	<input type="text"/>	<input type="text"/>
<b>Bebtelovimab (Lilly)</b>	<input type="text"/>	<input type="text"/>
<b>Antiviral Therapy</b>		
Paxlovid (Pfizer)	<input type="text"/>	<input type="text"/>
Molnupiravir (Merck)	<input type="text"/>	<input type="text"/>

Mandatory fields marked with \*

Save

# NHSN Access

## CRITICAL TO YOUR ABILITY TO REPORT DATA WEEKLY

### Steps to Gain Access:

1. Receive invitation to join NHSN
2. Read and agree to NHSN Rules of Behavior (includes training attestation)
3. Set up SAMS account and verify identity

### Best Practices:

- Assign and train additional users
- Deactivate users who no longer need access
- Create a plan for weekly reporting that also addresses staff turnover and time off

# How Do You Get an Invitation To Join NHSN?

A current facility user can invite you as a new user

- Watch this short video for instructions
  - [How to add users to NHSN and assign rights](#)

NHSN Facility Administrator change request form

- This is only an option if no one at the facility has a user account
- Access the form [here](#)
- Watch this short video for instructions
  - [Help! I am new & no one has NHSN access](#)



# NHSN Weekly Reporting Requirements

## COVID-19 Pathways

- Staff impact
- Resident impact
- Supplies
- Therapeutics

## COVID-19 Vaccination

- COVID-19 vaccination for HCW
- COVID-19 vaccination for residents

The screenshot displays the NHSN Long Term Care Facility Component Home Page. On the left is a navigation menu with the following items: NHSN Home, Alerts, Dashboard, Reporting Plan, Resident, Event, Summary Data, COVID-19, Vaccination Summary, Import/Export, Surveys, Analysis, Users, Facility, Group, and Logout. The 'COVID-19' item is highlighted. On the right, the main content area shows the 'Long Term Care Dashboard' and an 'Action Items' section. Under 'Action Items', there is a list of items to be completed: Dashboard, Pathway Data Reporting, POC Test Result Reporting, COVID-19 Vaccination - HCW, and COVID-19 Vaccination - Residents. The last two items are highlighted in yellow. At the bottom of the page, there is an 'Assurance of Confidentiality' statement.



You must report for each of these six areas at least once a week with no more than seven days between reports!

# NHSN Tracking Sheets as a Best Practice for Data Quality (and they are very helpful to you!)

Download these worksheets and reference guide

- [Data Tracking Worksheet for COVID-19 Vaccination among Residents](#)
- [Data Tracking Worksheet for COVID-19 Vaccination among Healthcare Personnel](#)
- [Data Tracking Worksheet Quick Reference Guide](#)

Weekly COVID-19 Vaccination Cumulative Summary for Residents of Long-Term Care Facilities TRACKING WORKSHEET					*Facility ID#:	Enter your Facility ID Here						
					Vaccination type:	COVID_19						
					*First day of Reporting Week (Monday):	2/15/2021						
					Last day of the reporting week (Sunday):	2/21/2021						
					Last day of the reporting week automatically populated							
*Resident Admit Date	Resident Discharge Date	Resident Last Name (Enter name)	Resident First Name (Enter name)	Unique Patient Identifier	*Vaccinated with Dose 1 (Enter date of vaccination 1)	*Dose 1 Vaccine Manufacturer Name (choose from drop-down)	*Vaccinated with Dose 2 (Enter date of vaccination 2)	*Dose 2 Vaccine Manufacturer Name (choose from drop-down)	Is Vaccination Series Complete? (Please Enter YES/NO for Red Cells)	Adverse Event Noted This Week? (Enter date of event)	*Contraindication or Exclusion Noted (Enter date of Contra-Indication)	Declined COVID Vaccine (Enter date of Declination)
5/13/2020		Duck	Daisy	100	12/21/2020	Pfizer_BioNTech	1/11/2021	Pfizer_BioNTech				
5/20/2020		Woody	Sheriff	101							12/21/2020	
5/25/2020		Lightyear	Buzz	102							12/27/2020	
5/25/2020		Donald	Duck	1234	12/21/2020	Pfizer_BioNTech	1/4/2021	Pfizer_BioNTech				
6/1/2020		Mickey	Mouse	2345	12/26/2020	Pfizer_BioNTech	1/4/2021	Pfizer_BioNTech				
6/1/2020	12/29/2020	Pooh	Winnie	3456	12/27/2020	Pfizer_BioNTech						
6/1/2020	12/25/2020	Clark	Kent	4567							12/24/2020	
6/15/2020		Man	Iron	5678	1/4/2021	Pfizer_BioNTech	1/26/2021	Pfizer_BioNTech				
7/13/2020		Doe	John	6789	1/18/2021	Pfizer_BioNTech	2/2/2021	Pfizer_BioNTech				
7/13/2020		Doe	Iane	1	1/18/2021	Pfizer_BioNTech	2/2/2021	Pfizer_BioNTech				
8/18/2020	12/25/2020	Pan	Peter	2	12/21/2020	Pfizer_BioNTech						
8/20/2020		Doo	Scooby	3	2/2/2021	Pfizer_BioNTech	2/17/2021	Pfizer_BioNTech				
8/20/2020		Bird	Big	4	2/2/2021	Pfizer_BioNTech	2/17/2021	Pfizer_BioNTech				
9/23/2020		Man	Super	5	3/1/2021	Moderna						

# Why You Need To Use the Data Tracking Worksheet

COVID-19 Vaccination Cumulative Summary for Long-Term Care Facility Residents TRACKING WORKSHEET	
Facility ID#:	59979
Vaccination type: COVID-19	COVID_19
Week of data collection first day (Monday):	1/17/2022
Week of data collection last day (Sunday):	1/23/2022
Date Last Modified:	
Cumulative Vaccination Coverage	
	* All Patients (Total)
1. *Number of residents staying in this facility for at least 1 day during the week of data collection	10
2. *Cumulative number of residents in Question #1 who have received COVID-19 vaccine(s) at this facility or elsewhere:	
2.1. Only dose 1 of <i>Pfizer-BioNTech</i> COVID-19 vaccine	3
2.2. Dose 1 and dose 2 of <i>Pfizer-BioNTech</i> COVID-19 vaccine	3
2.3. Only dose 1 of <i>Moderna</i> COVID-19 vaccine	1
2.4. Dose 1 and dose 2 of <i>Moderna</i> COVID-19 vaccine	3
2.5. One dose of <i>Janssen</i> COVID-19 vaccine	0
2.99 Complete COVID-19 vaccination series: Unspecified Manufacturer	0
* Any completed primary COVID-19 vaccine series	6
3. Cumulative number of residents in Question #1 with other conditions:	
3.1 *Medical contraindication or exclusion to COVID-19 vaccine	0
3.2. *Offered but declined COVID-19 vaccine	0
3.3.*Unknown COVID-19 vaccination status	0
4. *Cumulative number of residents in question #2 eligible to receive an additional dose or booster COVID-19 vaccine	5
5. *Cumulative number of residents in question #4 who have received an additional dose or booster COVID-19 vaccine at this facility or elsewhere since 08-01-2021	0
5.1. * Additional dose of <i>Pfizer-BioNTech</i> COVID-19 vaccine	0
5.2. * Additional dose of <i>Moderna</i> COVID-19 vaccine	0
5.3 * Additional dose of <i>Janssen</i> COVID-19 vaccine	0
5.4. Additional dose of unspecified manufacturer	0

Be sure the week of data collection is correct for the week you are entering to NHSN

Simply enter the data from each of the corresponding fields to NHSN

Use care when reporting question 4 (cumulative number eligible to receive booster has been removed). This has changed in the NHSN application and has not yet been updated on the worksheets

# Recent Updates in NHSN

## Weekly NHSN COVID-19 Vaccination Data Modules

1. The question of individuals eligible for an additional dose or booster dose has been removed **since most individuals are now eligible for a booster dose, according to the latest CDC guidelines** ([Interim Clinical Considerations for Use of COVID-19 Vaccines | CDC](https://www.cdc.gov/nhsn/pdfs/hps/covidvax/protocol-hcp-508.pdf)). This will also simplify data reporting for facilities.

**Important:** Please continue to track your internal data for who is eligible to get boosted on the excel tracking sheets so you can schedule in a timely manner.

<https://www.cdc.gov/nhsn/pdfs/hps/covidvax/protocol-hcp-508.pdf>

# Recent Updates in NHSN

## Weekly NHSN COVID-19 Vaccination Data Modules

2. The CDC updated COVID-19 vaccination data reporting guidance to include vendors under the “other contract personnel” category **if they are regularly scheduled to work in the facility**, regardless of clinical responsibility or patient contact. Facilities should begin reporting data on vendors from this point forward. If possible, facilities should revise data reported for prior weeks in accordance with this new guidance. For more information, please see the updated frequently asked questions, specifically questions 14 and 15, under the “Data Reporting: General” section: [FAQs on Reporting COVID-19 Vaccination Data | NHSN | CDC](#).

*\*HCP-eligible to have worked include individuals who are scheduled to work in the facility at least one day every week...*

Reference the new COVID-19 Vaccination Protocol:

<https://www.cdc.gov/nhsn/pdfs/hps/covidvax/protocol-hcp-508.pdf>

# List of Contracted and Vendor Healthcare Personnel

(Examples, not exhaustive)

- Admitting staff/clerical support/registrars
- Agency nurses
- Ambulance drivers (who enter the facility to assist with transportation)
- Biomedical engineers
- Central supply staff
- Chaplains
- Construction workers (working inside the facility)
- Dietary/food service staff
- Dieticians
- Dialysis technicians
- EKG technicians
- EMG technicians
- Home health aides
- Housekeeping staff
- Information Technology staff
- Laboratory: Phlebotomists
- Laboratory: Technicians
- Landscapers (working inside the facility)
- Laundry staff
- Maintenance staff/engine
- Nursing aides
- Occupational therapists
- Patient care technicians
- Patient transporters
- Pharmacists
- Pharmacy/medication technicians
- Physical therapists
- Psychologists
- Psychology technicians/Mental health workers
- Radiology: X-ray technicians
- Recreational therapists/Music therapists
- Respiratory therapists
- Security staff
- Social workers/case managers
- Speech therapists
- Surgical technicians
- Traveling nurses
- Ultrasound technicians
- Utilization review nurses

# Recent Updates in NHSN

New data quality check manual. Please review this manual to ensure you are reporting correctly and by the case definitions.

<https://www.cdc.gov/nhsn/pdfs/hps/covidvax/monthly-dq-508.pdf>

NHSN tutorials to help you generate your own analysis reports. Use these to help you verify your internal NHSN data accuracy.

- **New!** [Facility Line Listing: All COVID-19 Vaccination Cumulative Summary Data – Additional or Booster Doses – January 2022](#)
- **New!** [Long Term Care Line Listing: All COVID-19 Vaccination Cumulative Detailed Data – Residents – January 2022](#)
- **New!** [Weekly COVID-19 Vaccination Reporting – Long Term Care Facility – January 2022](#)

# Challenge: Try to attend at least 1 BOOST Event

## Upcoming Office Hours & Registration Links:

*You will receive AANC contact hours if you complete the poll after the webinar*

[BOOST Education Event | 3.16.22](#)

[BOOST Office Hours | 3.24.22](#)

[BOOST Education Event | 3.30.22](#)

[BOOST Office Hours | 3.31.22](#)

Each Tuesday, you will receive a [newsletter](#) with a best practices, updated guidance, posters, and education.

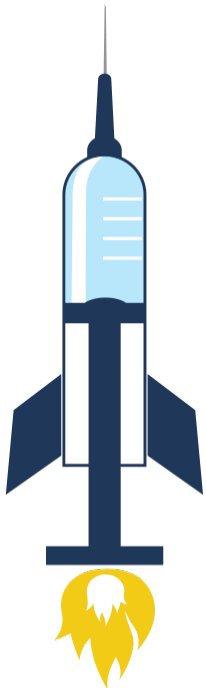
Weekly Booster Bulletin March 8<sup>th</sup> (**did you receive yours?**)

[March 8<sup>th</sup>](#)

[March 1<sup>st</sup>](#)

Give The BOOST A Shot Resources

<https://quality.allianthealth.org/topic/give-the-boost-a-shot/>





# Objectives Check-In

## Learn today:

- Review NHSN access
- Discuss NHSN reporting requirements
- Review Data Entry to NHSN
- Run Reports to ensure data is accurate and of high quality



## Use tomorrow:

- Continue to use your tracking sheets for accurate reporting to NHSN
- Check your data for accuracy and completeness weekly in NHSN
- Use your NHSN data for action and quality improvement

**How will this change what you do? Please tell us in the poll.**

# Shop Talk Shorts

Instructional videos to answer technical questions related to NHSN

[Help! I am new & no one has NHSN access](#)

[How do I find out who has access to my facility?](#)

[How do I add users and rights to our NHSN account?](#)

[Can I use my grid card to access my new facility?](#)

[How do I change my email address for NHSN & SAMS?](#)

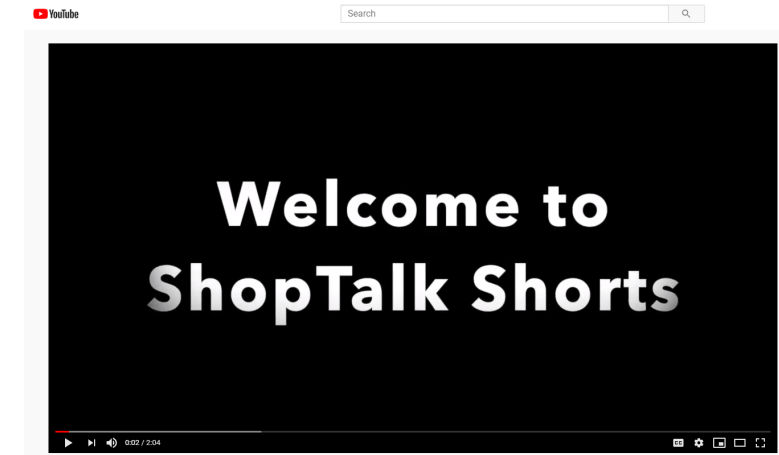
[I am leaving, how do I reassign another NHSN facility administrator?](#)

[How do I generate a report in NHSN to see my vaccine data and dates submitted?](#)

[How do I join Alliant Quality's NHSN Data Group?](#)

[Generate an analysis report](#)

[How do I use Tracking Sheets for submitting my vaccine data into NHSN?](#)



Bookmark our FAQ YouTube channel for easy reference to frequent NHSN issues:

<https://www.youtube.com/playlist?list=PLXWmxni-xNHspWHhLlIrrqcLGlzXZPljIF>

# Questions?

Please put your questions  
into the Q&A.



# Closing Survey

## Help Us Help You!

- Please turn your attention to the poll that has appeared in the lower right-hand side of your screen.
- Completion of this survey will help us ensure our topics cater to your needs.



# Thank You for Your Time!

## Contact the Patient Safety Team



**Marilee H. Johnson, MBA, MT (ASCP)**  
Technical Advisor, Infection Prevention  
[Marilee.Johnson@AlliantHealth.org](mailto:Marilee.Johnson@AlliantHealth.org) | 919.695.8331

**Amy Ward, MS, BSN, RN, CIC**  
Infection Prevention Specialist  
[Amy.Ward@AlliantHealth.org](mailto:Amy.Ward@AlliantHealth.org) | 678.527.3653



**Melody Brown, MSM**  
Aim Manager, Patient Safety  
[Melody.Brown@AlliantHealth.org](mailto:Melody.Brown@AlliantHealth.org) | 678.527.3466



# Mark Your Calendar!



Shop Talk: 3<sup>rd</sup> Thursdays at 2 p.m. ET

## Registration Links:

[April 21, 2022](#)

[May 19, 2022](#)

Visit our website for more info:

<https://quality.allianthealth.org/topic/shop-talks/>

# CMS 12<sup>th</sup> SOW Goals



## Behavioral Health Outcomes & Opioid Misuse

- ✓ Promote opioid best practices
- ✓ Decrease high dose opioid prescribing and opioid adverse events in all settings
- ✓ Increase access to behavioral health services



## Patient Safety

- ✓ Reduce risky medication combinations
- ✓ Reduce adverse drug events
- ✓ Reduce C. diff in all settings



## Chronic Disease Self-Management

- ✓ Increase performance on ABCS clinical quality measures (i.e., aspirin use, blood pressure control, cholesterol management, cardiac rehab)
- ✓ Identify patients at high-risk for developing kidney disease & improve outcomes
- ✓ Identify patients at high risk for diabetes-related complications & improve outcomes



## Quality of Care Transitions

- ✓ Convene community coalitions
- ✓ Identify and promote optimal care for super utilizers
- ✓ Reduce community-based adverse drug events

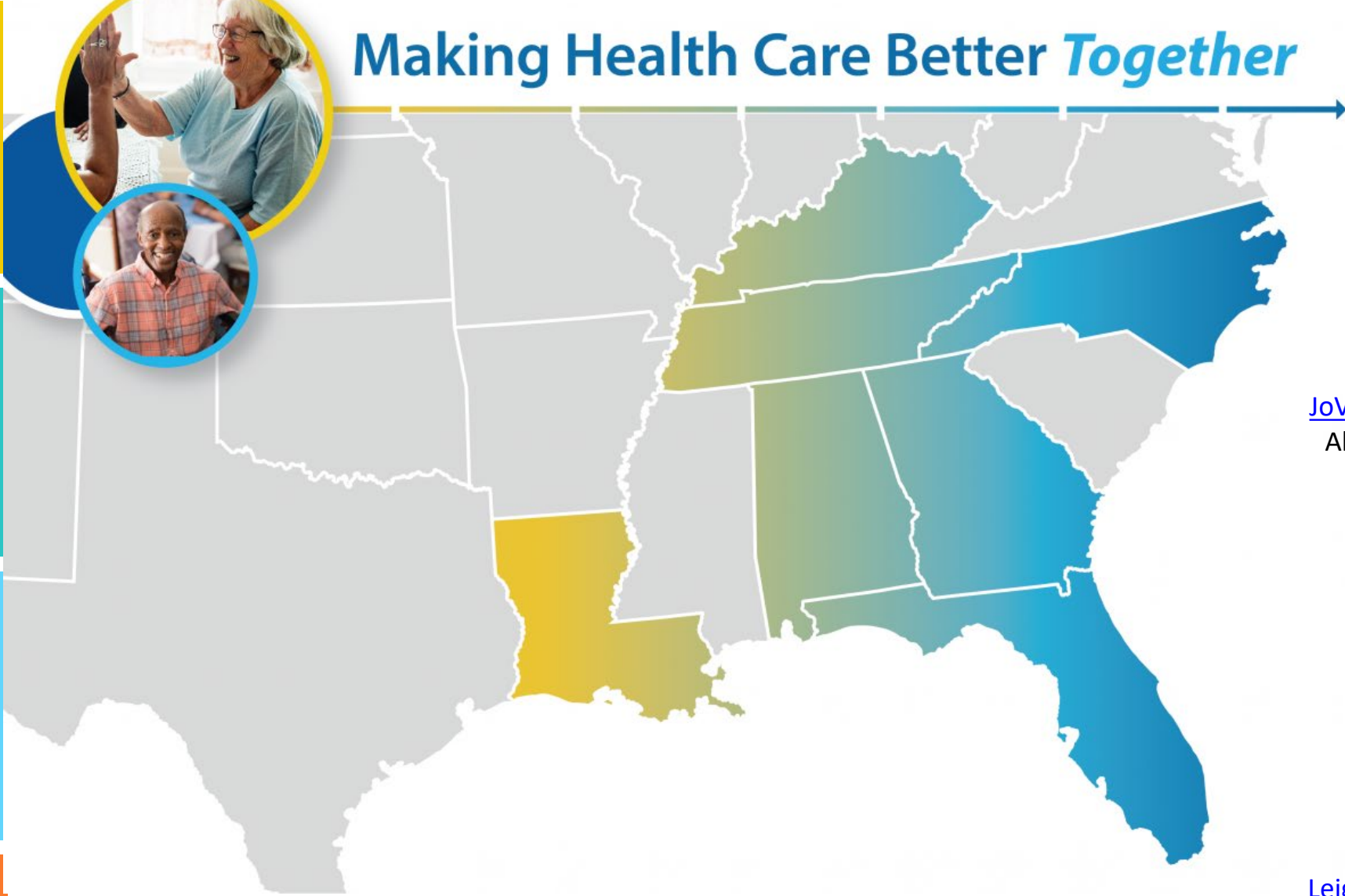


## Nursing Home Quality

- ✓ Improve the mean total quality score
- ✓ Develop national baselines for healthcare related infections in nursing homes
- ✓ Reduce emergency department visits and readmissions of short stay residents



# Making Health Care Better *Together*



JoVonn Givens

[JoVonn.Givens@AlliantHealth.org](mailto:JoVonn.Givens@AlliantHealth.org)

Alabama, Florida and Louisiana



Leighann Sauls

[Leighann.Sauls@AlliantHealth.org](mailto:Leighann.Sauls@AlliantHealth.org)

Georgia, Kentucky, North Carolina and Tennessee

## Program Directors



# Stay Up-to-Date With BOOST

<https://bit.ly/BOOSTLandingPage>



## BOOST Office Hours

[BOOST Office Hours & Shop Talk | 1.20.2022](#)

[BOOST Office Hours | 1.27.2022](#)

[BOOST Office Hours | 2.3.2022](#)

[BOOST Office Hours | 2.10.2022](#)

[BOOST Office Hours & Shop Talk | 2.17.2022](#)

[BOOST Office Hours | 2.24.22](#)

[BOOST Office Hours | 3.3.22](#)

[BOOST Office Hours | 3.10.22](#)

[BOOST Office Hours & Shop Talk | 3.17.22](#)

[BOOST Office Hours | 3.24.22](#)

[BOOST Office Hours | 3.31.22](#)



## BOOST Education Events

[BOOST Kick-Off Event | 1.19.22](#)

[BOOST Education Event | 1.26.2022](#)

[BOOST Education Event | 2.2.2022](#)

[BOOST Education Event | 2.9.2022](#)

[BOOST Education Event | 2.16.2022](#)

[BOOST Educational Event | 2.23.22](#)

[BOOST Education Event | 3.2.22](#)

[BOOST Education Event | 3.9.22](#)

[BOOST Education Event | 3.16.22](#)

[BOOST Education Event | 3.23.22](#)

[BOOST Education Event | 3.30.22](#)

## Social Media Graphics



### Mask Up, Sleeve Up

[BOOST: Mask Up, Sleeve Up – Flyer](#)  
[BOOST: Mask Up, Sleeve Up – Twitter](#)  
[BOOST: Mask Up, Sleeve Up – Facebook/LinkedIn](#)



### Don't Miss Your Shot

[BOOST: Don't Miss Your Shot – Flyer](#)  
[BOOST: Don't Miss Your Shot – Twitter](#)  
[BOOST: Don't Miss Your Shot – Facebook/LinkedIn](#)



### This Is Your Shot

[BOOST: This Is Your Shot – Flyer](#)  
[BOOST: This Is Your Shot – Twitter](#)  
[BOOST: This Is Your Shot – Facebook/LinkedIn](#)

## BOOST Bulletin Board

Booster Bulletin | Jan. 25, 2022



Booster Bulletin | Feb. 1, 2022



Booster Bulletin | Feb. 8, 2022



Booster Bulletin | Feb. 15, 2022



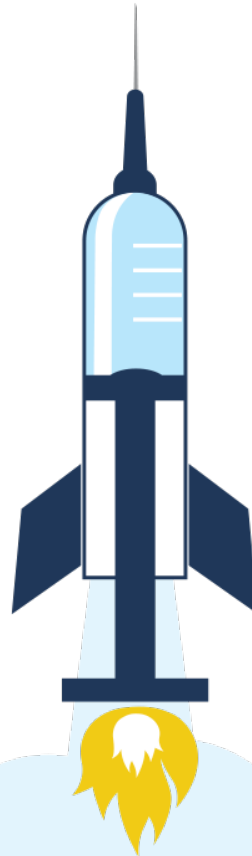
Booster Bulletin | Feb. 22, 2022



Booster Bulletin | March 1, 2022



**#GivetheBoostaShot #VaxToTheMax**



@AlliantQIO



@AlliantQIO



Alliant Health Solutions



AlliantQIO

# Making Healthcare Better *Together*

This material was prepared by Alliant Health Solutions, a Quality Innovation Network – Quality Improvement Organization (QIN – QIO) and Hospital Quality Improvement Contractor (HQIC) under contract with the Centers for Medicare & Medicaid Services (CMS), an agency of the U.S. Department of Health and Human Services (HHS). Views expressed in this material do not necessarily reflect the official views or policy of CMS or HHS, and any reference to a specific product or entity herein does not constitute endorsement of that product or entity by CMS or HHS.

Publication No. 12SOW-AHSQIN-QIO TO1 - NH--1681-03/14/22