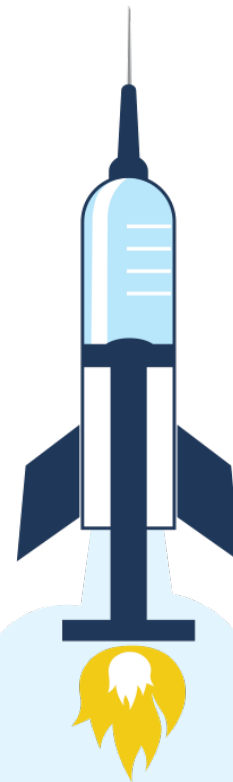


BOOST Office Hours: Focus on Primary and Booster Uptake

Swati Gaur MD, MBA, CMD, AGSF
Medical Director, Post Acute Care
Northeast Georgia Health System



 **ALLIANT**
HEALTH SOLUTIONS

QIN-QIO
Quality Innovation Network -
Quality Improvement Organizations
CENTER'S FOR MEDICARE & MEDICAID SERVICES
EQUALITY IMPROVEMENT & INNOVATION GROUP

Swati Gaur, MD, MBA, CMD, AGSF

MEDICAL DIRECTOR, POST ACUTE CARE NORTHEAST GEORGIA HEALTH SYSTEM

Dr. Swati Gaur is the Medical Director of New Horizons Nursing Facilities with the Northeast Georgia Health System. She is also the CEO of Care Advances Through Technology, a technology innovation company. In addition, she is on the EMR transition and implementation team for the Health System, providing direction to EMR entity adapt to LTC environment.

She has also consulted with post acute long term care companies to optimize medical services into PALTC facilities, integration of medical directors and clinicians in to the QAPI framework and create frameworks of interdisciplinary work in the organization. She established the Palliative Care Service Line at the Northeast Georgia Health System. She also is an attending physician in several nursing facilities. Prior to that Dr. Gaur was a medical director at the LTC in Carl Vinson VA Medical Center and member of the G&EC for VISN 7.

Dr. Gaur attended medical school in Bhopal, India and started residency in Internal Medicine in St Luke's–Roosevelt Medical Center in New York. She completed her fellowship in Geriatrics at the University of Pittsburgh Medical Center and is board certified in Internal Medicine, Geriatrics and Hospice and Palliative Medicine. She went on to do Masters in Business Administration at Georgia Institute of Technology with concentration in Management of Technology.



Making Health Care Better *Together*



About Alliant Health Solutions



**I still got COVID-19 after the 2nd shot!
Why should I get the 3rd?**

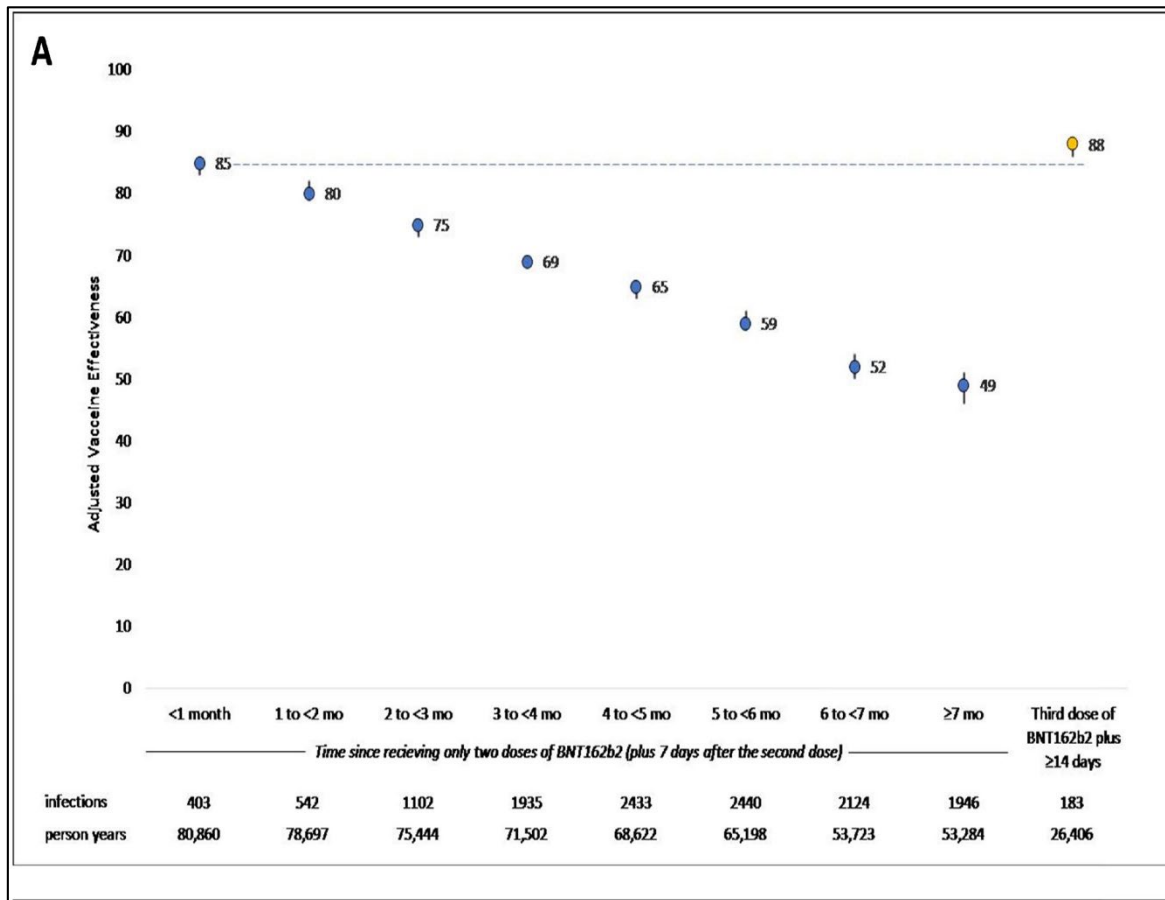
Infection:

mRNA vaccines:

2 doses vs.

2 doses and booster

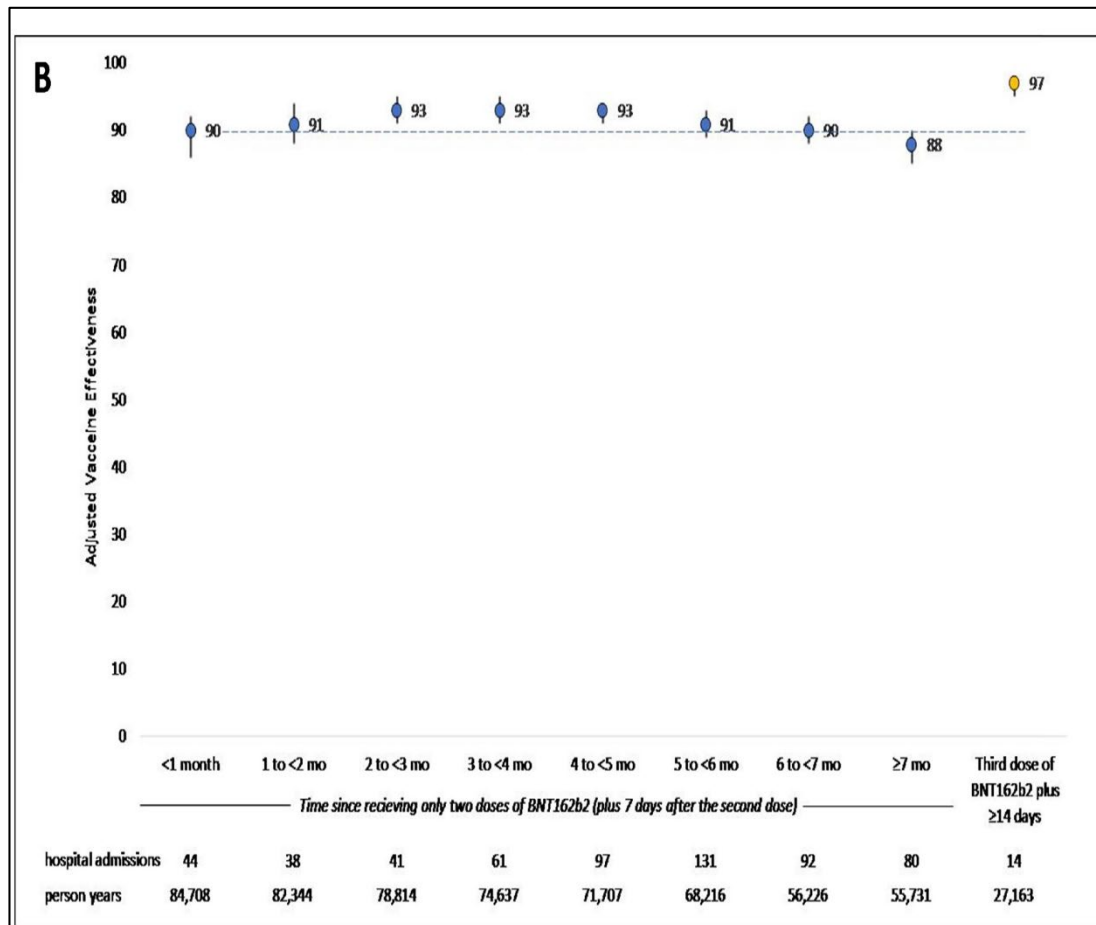
Tartof SY, Slezak JM, Puzniak L, et al. Effectiveness of a third dose of BNT162b2 mRNA COVID-19 vaccine in a large US health system: A retrospective cohort study. *The Lancet Regional Health - Americas*. Published online February 14, 2022:100198. doi:10.1016/j.lana.2022.100198



Hospitalization:

mRNA vaccines :
2 doses vs.
2 doses and booster

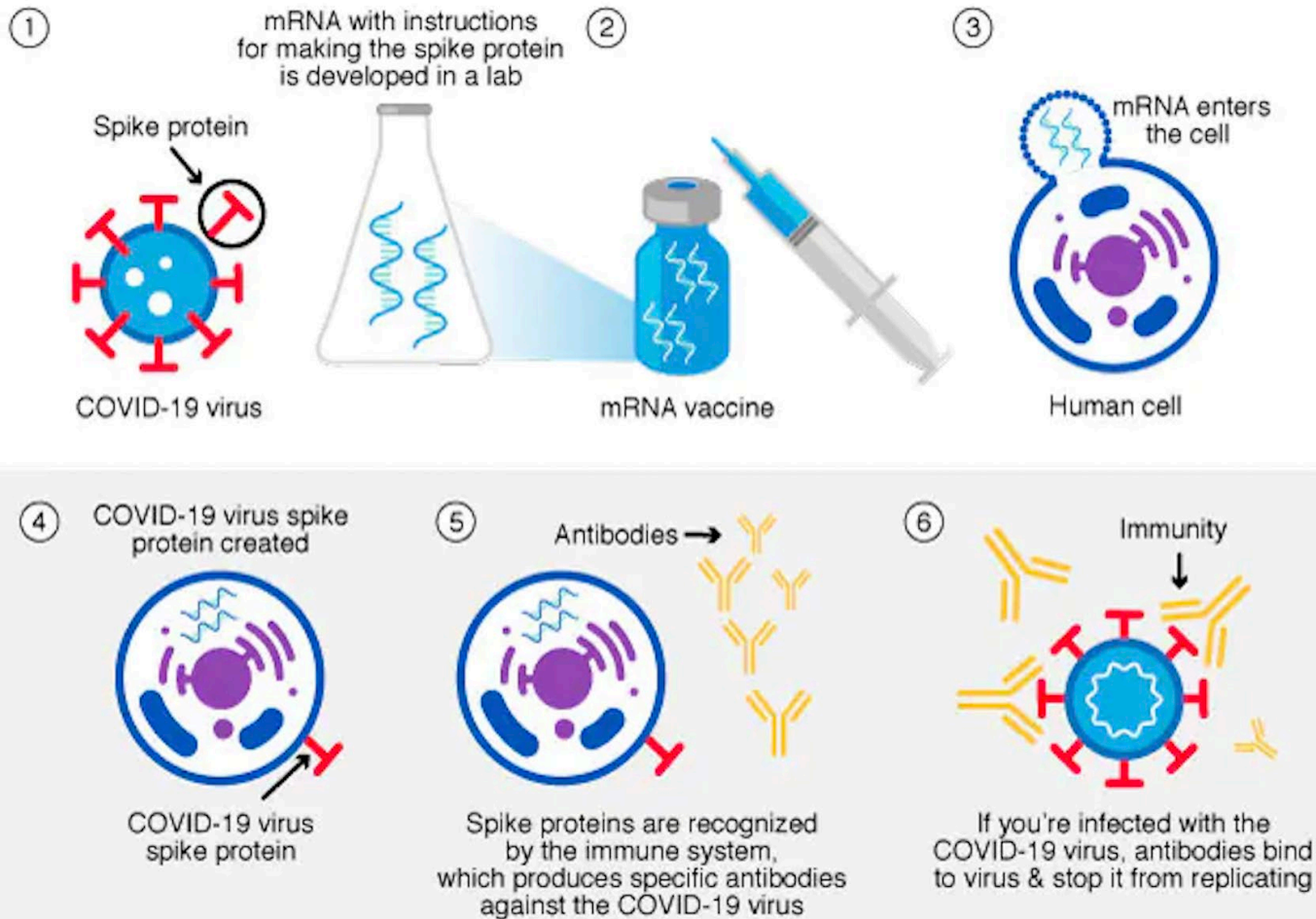
Tartof SY, Slezak JM, Puzniak L, et al. Effectiveness of a third dose of BNT162b2 mRNA COVID-19 vaccine in a large US health system: A retrospective cohort study. *The Lancet Regional Health - Americas*. Published online February 14, 2022:100198. doi:10.1016/j.lana.2022.100198

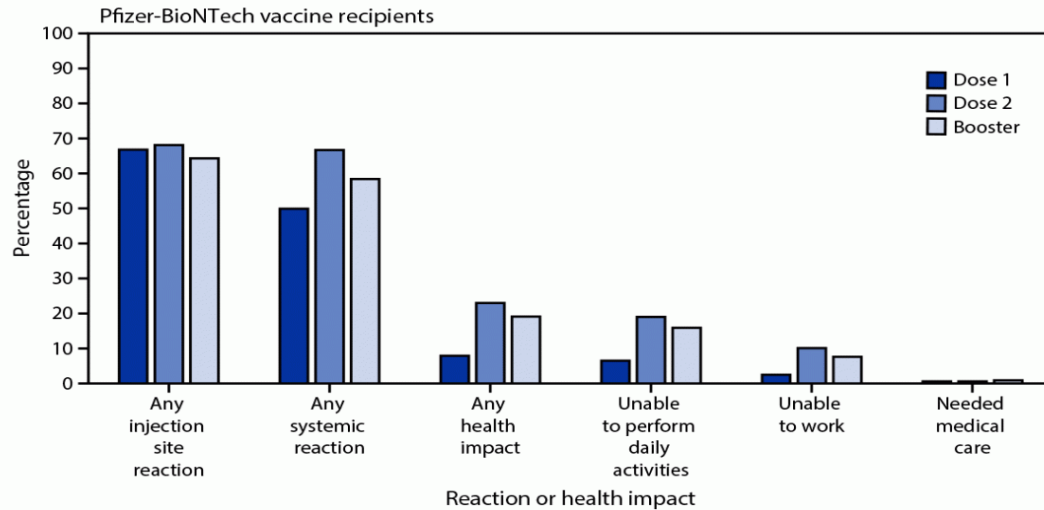
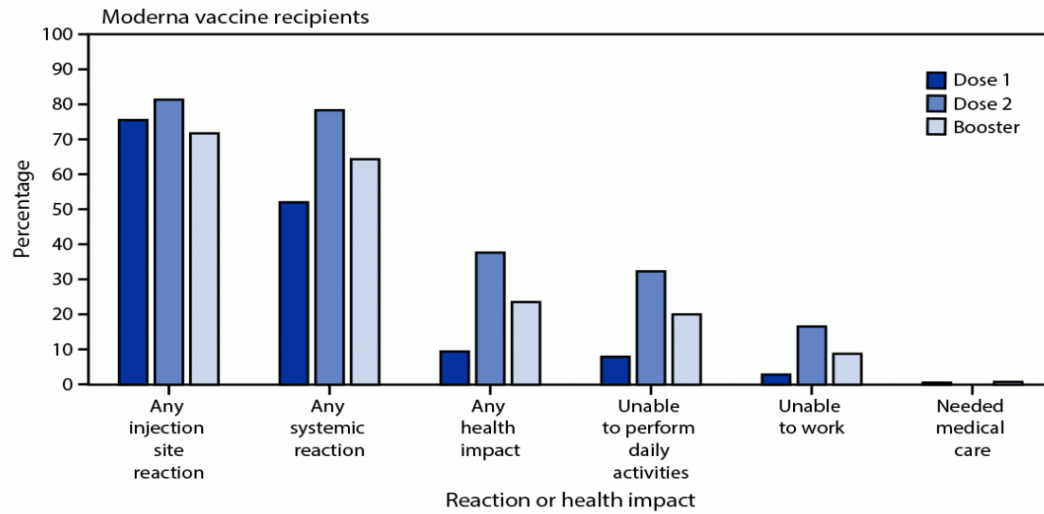




I had chills and arm pain after the 2nd shot. I'm worried about the side effects.

Let's talk about it!







Our staff is overwhelmed with other things like infection control, isolation, etc. We don't have time.

CDC: Interim Infection Prevention and Control Recommendations to Prevent SARS-CoV-2 Spread in Nursing Homes: Feb 2

UP TO DATE



Isolation

- Admissions
- Isolation post exposure
- LOA >24hours



Testing

- Expanded testing for HCW not up to date



PPE

- N95 and eye protection for staff not up to date



It's hard to keep track of who can get the vaccine especially during outbreak.

Questions?



CMS 12th SOW Goals



Behavioral Health Outcomes & Opioid Misuse

- ✓ Promote opioid best practices
- ✓ Decrease high dose opioid prescribing and opioid adverse events in all settings
- ✓ Increase access to behavioral health services



Patient Safety

- ✓ Reduce risky medication combinations
- ✓ Reduce adverse drug events
- ✓ Reduce C. diff in all settings



Chronic Disease Self-Management

- ✓ Increase performance on ABCS clinical quality measures (i.e., aspirin use, blood pressure control, cholesterol management, cardiac rehab)
- ✓ Identify patients at high-risk for developing kidney disease & improve outcomes
- ✓ Identify patients at high risk for diabetes-related complications & improve outcomes



Quality of Care Transitions

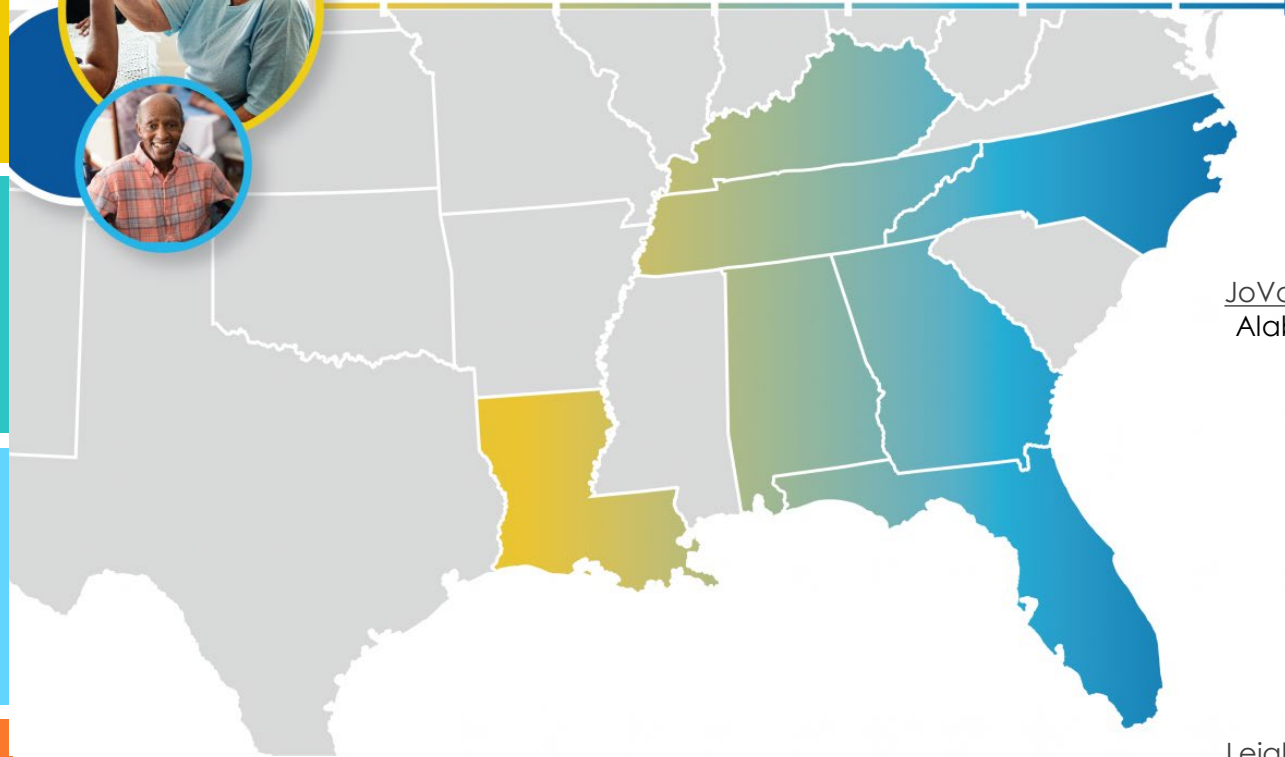
- ✓ Convene community coalitions
- ✓ Identify and promote optimal care for super utilizers
- ✓ Reduce community-based adverse drug events



Nursing Home Quality

- ✓ Improve the mean total quality score
- ✓ Develop national baselines for healthcare related infections in nursing homes
- ✓ Reduce emergency department visits and readmissions of short stay residents

Making Health Care Better Together

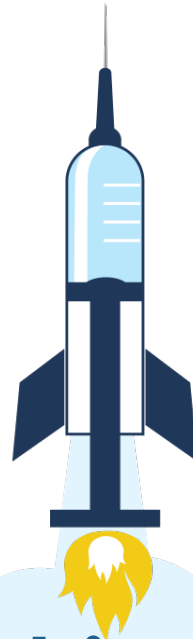


JoVonn Givens
JoVonn.Givens@AlliantHealth.org
Alabama, Florida and Louisiana



Leighann Sauls
Leighann.Sauls@AlliantHealth.org
Georgia, Kentucky, North Carolina and Tennessee

Program Directors



Making Healthcare Better Together



@AlliantQIO



@AlliantQIO



Alliant Health Solutions



AlliantQIO

This material was prepared by Alliant Health Solutions, a Quality Innovation Network – Quality Improvement Organization (QIN – QIO) and Hospital Quality Improvement Contractor (HQIC) under contract with the Centers for Medicare & Medicaid Services (CMS), an agency of the U.S. Department of Health and Human Services (HHS). Views expressed in this material do not necessarily reflect the official views or policy of CMS or HHS, and any reference to a specific product or entity herein does not constitute endorsement of that product or entity by CMS or HHS.
Publication No: 12SOW-AHSQIN-QIO-TO1-NH--1591-02/24/22