

Antipsychotic Medication ADVERSE DRUG EVENTS (ADES)

DEFINITIONS:

CDC: An adverse drug event (ADE) is when someone is harmed by a medicine.¹

CMS: An injury resulting from drug-related medical interventions.²

QUICK FACT ABOUT ADES:

- It is generally estimated that about half of ADEs are preventable.³

COMMON EFFECTS OF ANTIPSYCHOTIC ADEs²:

OCCURRENCES THAT COULD POINT TO AN ANTIPSYCHOTIC ADE²:

- Transfer to hospital
- Call to physician regarding new onset of relevant signs or symptoms
- New order for restraint
- Addition of a new medication
- Removal of a medication



Sedation



Falls or Unsteady Gait



Confusion



Orthostatic Hypotension



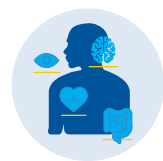
Loss of Facial Expressions



Parkinsonism
A neurological disorder resembling Parkinson's disease⁵



Destabilized Blood Sugar



Anticholinergic Effects

Examples: dry mouth, constipation, urinary retention, bowel obstruction, dilated pupils, blurred vision, increased heart rate, decreased sweating, confusion, etc.



Cardiac Arrhythmias



Tardive Dyskinesia
A neurological disorder characterized by involuntary uncontrollable movements especially of the mouth, tongue, trunk, and limbs⁴

¹ https://www.cdc.gov/medicationsafety/adult_adversedrugevents.html

² <https://www.cms.gov/Medicare/Provider-Enrollment-and-Certification/QAPI/Downloads/Adverse-Drug-Event-Trigger-Tool.pdf>

³ <https://psnet.ahrq.gov/primer/medication-errors-and-adverse-drug-events>

⁴ <https://www.merriam-webster.com/dictionary/tardive%20dyskinesia#medicalDictionary>

⁵ <https://www.merriam-webster.com/dictionary/parkinsonism>